



## Portnall Road, W9

£450,000

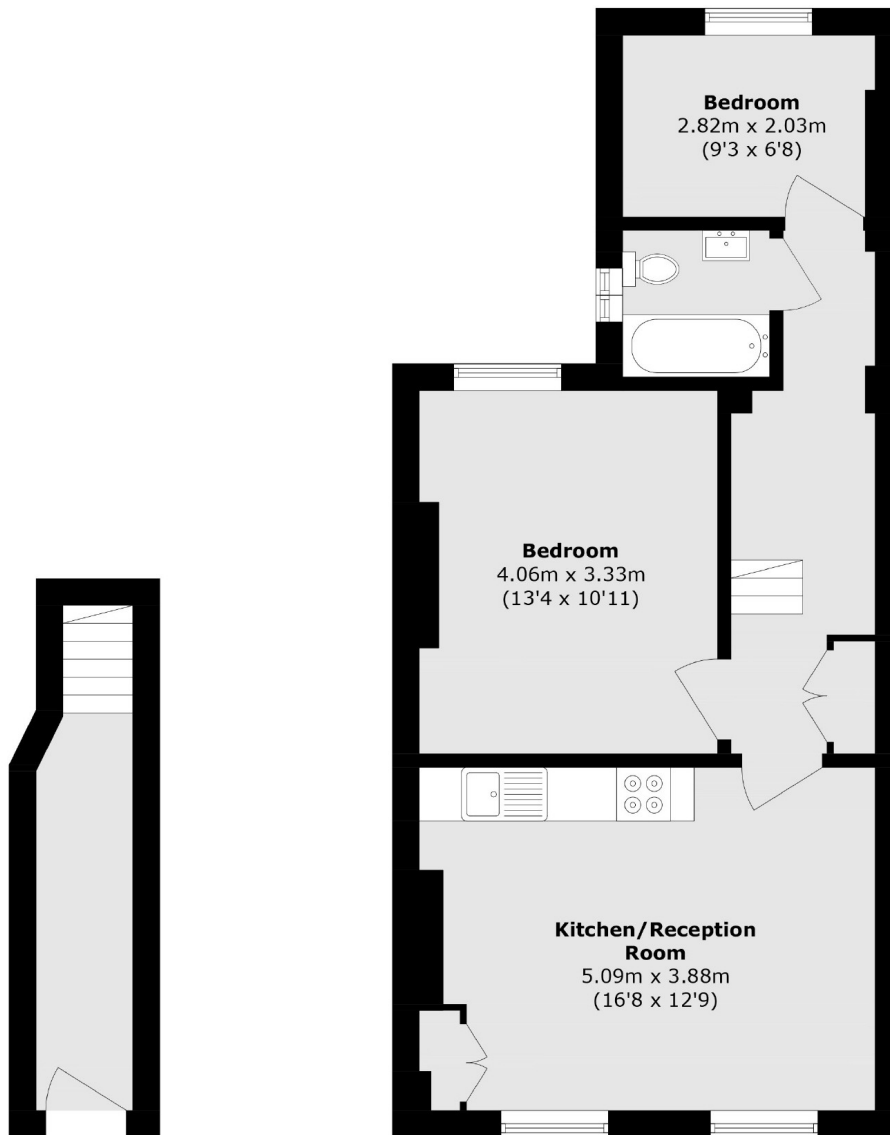
A first floor maisonette set in a charming Victorian conversion. The property comes complete with two bedrooms and an open plan kitchen/reception with large sash windows.

Portnall Road is ideally situated near the charming cafés and shops of Salusbury Road, with easy access to Queens Park, Westbourne Park, and Maida Vale underground stations, providing convenient links to Central London.

### Features

- Private Entrance
- Two Bedrooms
- Open Plan Reception
- Victorian Conversion
- Great Location
- Chain Free

# Portnall Road, Maida Vale, W9



**Raised Ground Floor**

**First Floor**

Total area (approx.): 57.7 sq. m (621.0 sq. ft)