



Jessop Avenue
Southall

£429,950

Freehold

This well presented two bedroom home is ideal for first time buyers seeking the perfect opportunity for a peaceful retreat with easy access to local amenities.

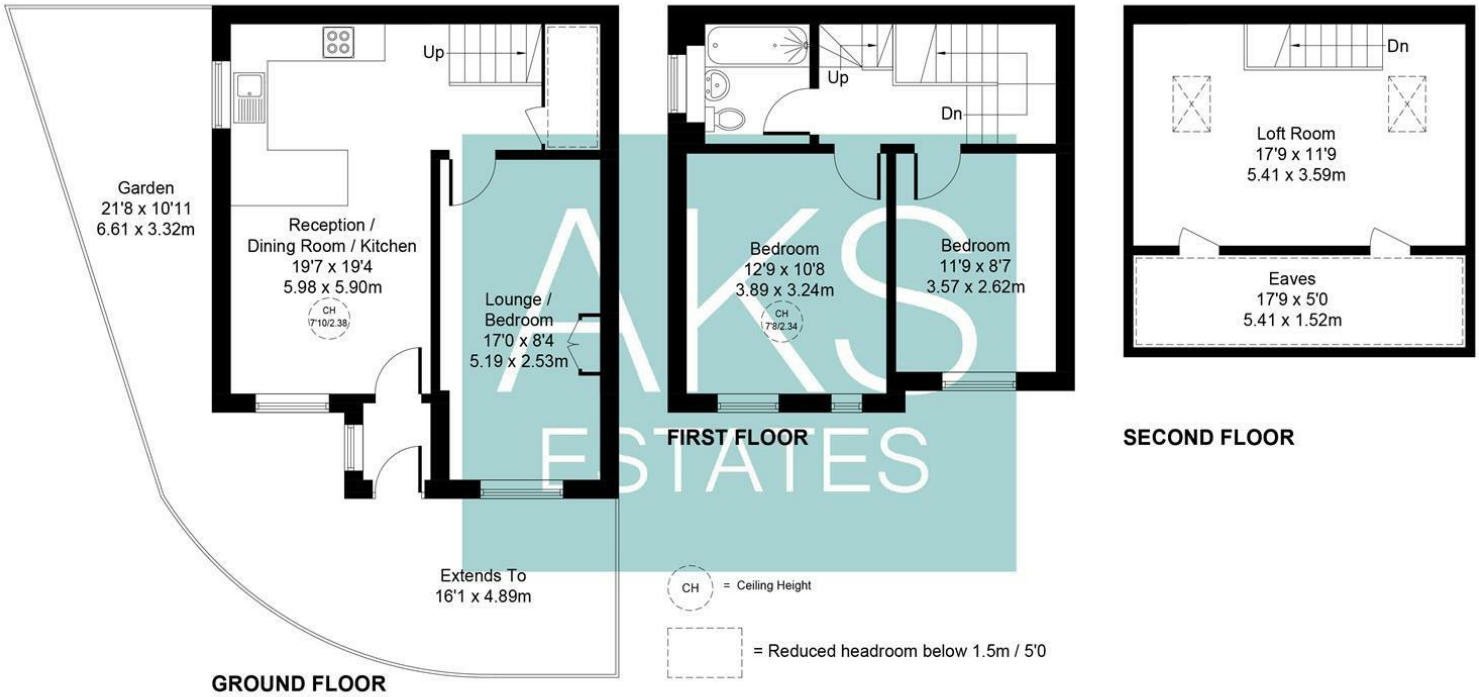
Upon entering, you will find two spacious reception rooms that provide ample space for relaxation and entertaining. The layout is both practical and inviting, making it easy to create a warm and welcoming atmosphere. The property also features a versatile room in the loft, which can be utilised for storage or transformed into a home office, catering to the needs of modern living.

The exterior of the house boasts off street parking, a valuable asset in this bustling area, ensuring that you have a secure place for your vehicle. The location is particularly advantageous, as it is within walking distance to a variety of local shops, schools and essential services such as bus links and a short distance to Southall Railway Station.

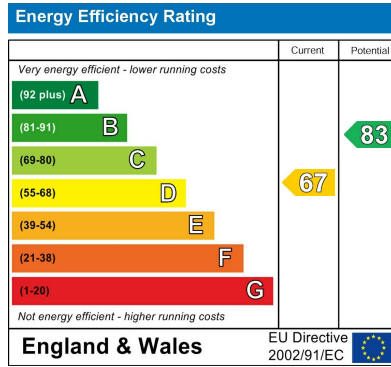


Jessop Avenue, Southall

Approximate Gross Internal Area = 825 sq ft / 76.6 sq m
 Loft Room (Excluding Eaves) = 209 sq ft / 19.4 sq m
 Total = 1034 sq ft / 96.0 sq m



Not to Scale. Produced by © Vizion Property Marketing 2025
 For Illustrative Purposes Only.



Agents Note: Whilst every care has been taken to prepare these particulars, they are for guidance purposes only. All measurements are approximate and are for general guidance purposes only and whilst every care has been taken to ensure their accuracy, they should not be relied upon and potential buyers/tenants are advised to recheck the measurements

Heston
 131A Heston Road
 Hounslow
 TW5 0RF

020 8059 0595
 shiv@aksestates.co.uk
 aksestates.co.uk

