



Edenbridge Road, Enfield, EN1 2LW

welcome to
Edenbridge Road, Enfield

Barnfields are delighted to offer this extended and deceptively spacious four bedroom Edwardian house in a most sought after turning, within easy walking distance of Bush Hill Park Rail Station (Liverpool Street Line) and local shops and the ever popular Raglan Junior School. Enfield Town shopping centre is within easy reach.

The well presented accommodation features:-



Entrance Hall

Laminate floor, dado rail, radiator, understairs storage cupboard/meter cupboard.

Lounge

15' x 11' 7" (4.57m x 3.53m)
Fitted carpet, radiator, attractive mock fireplace with tiled slips and wooden mantel.

Dining Room

12' 6" x 11' 7" (3.81m x 3.53m)
Laminate floor, radiator, multi pane double doors to kitchen/diner.

Kitchen / Diner

9' 8" extending to 19' 4" max x 15' 4" (2.95m extending to 5.89m max x 4.67m)
Comprehensively fitted in attractive modern units, comprising base units with worktops, matching wall cabinets, inset stainless steel sink unit, plumbing for washing machine and dishwasher, wall mounted combination gas central heating boiler, ceramic tiled floor, radiator, double glazed French windows to garden.

First Floor

Bedroom One

12' 6" x 10' (3.81m x 3.05m)
Fitted carpet, radiator, picture rail.

Bedroom Two

12' 4" x 10' (3.76m x 3.05m)
Fitted carpet, radiator, range of built-in wardrobe cupboards.

Bedroom Three

7' 5" x 6' 10" (2.26m x 2.08m)
Fitted carpet, radiator.

Family Bathroom / WC

Panelled bath, vanity basin with cupboard under, low flush WC (white suite), vinyl floor, fully tiled walls, radiator, airing cupboard housing radiator.

Second Floor

Bedroom Four

17' 8" x 10' (5.38m x 3.05m)
Fitted carpet, radiator, eaves cupboards and recess.

En-Suite Shower Room / WC

Shower cubicle, pedestal wash hand basin, low flush WC (white suite), laminate floor, radiator.

Outside

Front Garden

With dropped kerb and off-street parking for one car.

Rear Garden

Approximately 110' of rear garden, patio, laid to lawn, flower and shrub borders, outside water tap, timber shed, walled to rear.



view this property online barnfields.co.uk/Property/ENF105887







welcome to

Edenbridge Road, Enfield

- Two Attractive Reception Rooms
- Spacious Extended Kitchen / Diner
- Two Bathrooms (One En-Suite)
- 110' Rear Garden
- Off-Street Parking To Front

Tenure: Freehold EPC Rating: Awaited

£675,000



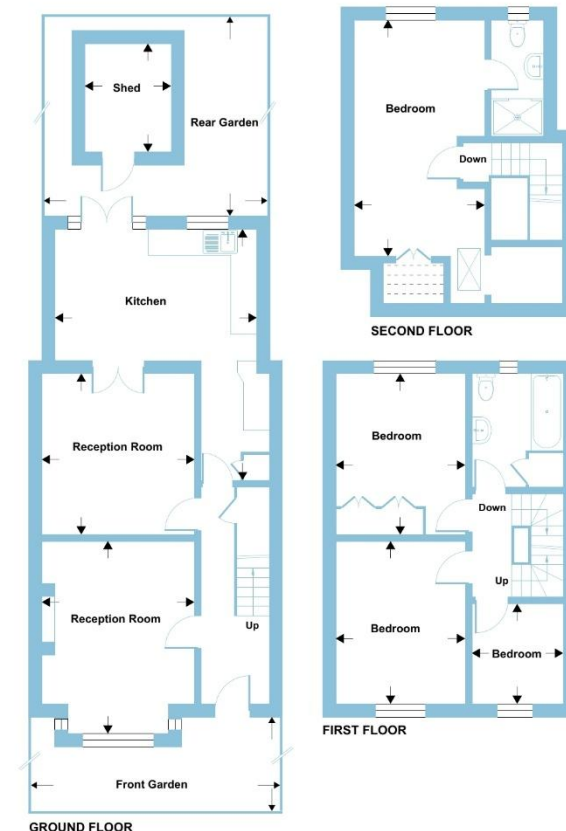
Please note
the marker
reflects the
postcode not
the actual
property

Edenbridge Road, Enfield, EN1

Approximate Area = 1341 sq ft / 124.5 sq m
Limited Use Area(s) = 18 sq ft / 1.6 sq m
Outbuilding = 53 sq ft / 4.9 sq m
Total = 1412 sq ft / 131 sq m
For identification only - Not to scale



Denotes restricted
head height



Floor plan produced in accordance with RICS Property Measurement 2nd Edition, Incorporating International Property Measurement Standards (IPMS2 Residential). © nrbwcom 2026. Produced for Barnard Marcus. REF: 1453235



check out more properties at [barnfields.co.uk](https://www.barnfields.co.uk)



Property Ref:
ENF105887 - 0002

1. MONEY LAUNDERING REGULATIONS Intending purchasers will be asked to produce identification documentation at a later stage and we would ask for your co-operation in order that there is no delay in agreeing the sale. 2. These particulars do not constitute part or all of an offer or contract. 3. The measurements indicated are supplied for guidance only and as such must be considered incorrect. Potential buyers are advised to recheck measurements before committing to any expense. 4. We have not tested any apparatus, equipment, fixtures or services and it is in the buyers interest to check the working condition of any appliances. 5. Where an EPC, or a Home Report (Scotland only) is held for this property, it is available for inspection at the branch by appointment. If you require a printed version of a Home Report, you will need to pay a reasonable production charge reflecting printing and other costs. 6. We are not able to offer an opinion either written or verbal on the content of these reports and this must be obtained from your legal representative. 7. Whilst we take care in preparing these reports, a buyer should ensure that his/her legal representative confirms as soon as possible all matters relating to title including the extent and boundaries of the property and other important matters before exchange of contracts.

Barnfields is a trading name of Sequence (UK) Limited which is registered in England and Wales under company number 4268443, Registered Office is Cumbria House, 16-20 Hockliffe Street, Leighton Buzzard, Bedfordshire, LU7 1GN. VAT Registration Number is 500 2481 05.



020 8363 3394



info@barnfields.com



1a Windmill Hill, Enfield, Middlesex, EN2 6SE



[barnfields.co.uk](https://www.barnfields.co.uk)