



Shell Road, SE13 £350,000

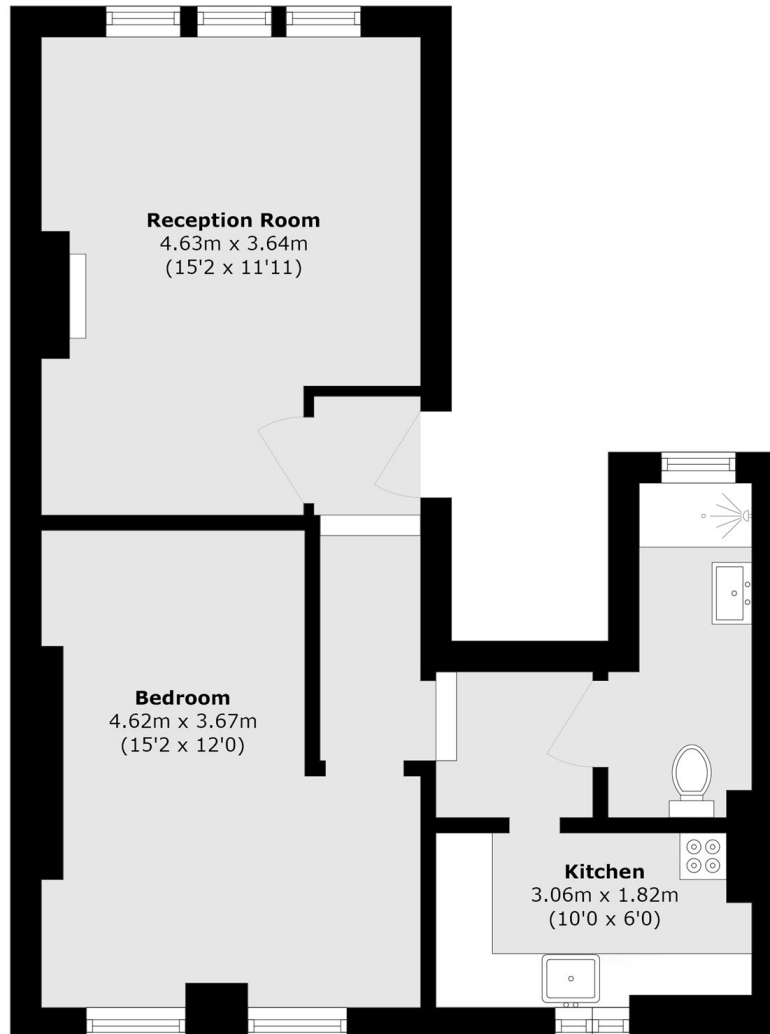
A very well-presented first floor flat set within a stunning Edwardian building. Offering a generous bay fronted reception room and large double bedroom, the favourable position makes this a great first purchase.

Shell road is a residential road located close to Ladywell Village, Lewisham town centre and fantastic local amenities. St. Johns, Lewisham DLR and Ladywell stations are nearby with Hilly Fields and Brookmill park also in close proximity.

Features

- Period Conversion
- Large Reception Room
- Double Bedroom
- Share Of Freehold
- Close To Transport
- Close To Amenities

Shell Road,
London, SE13



Total area (approx.): 46.9 sq. m (504.8 sq. ft)