

  
**PROMINENCE**  
ESTATES



**RESIDENTIAL**  
PROPERTY EXPERTS

COVENTRY, WARWICKSHIRE  
& LEAMINGTON SPA

**CHARTER AVENUE,**  
COVENTRY, CV4 8ED

**£725 PER CALENDAR**

## CHARTER AVENUE



**PROMINENCE**  
ESTATES

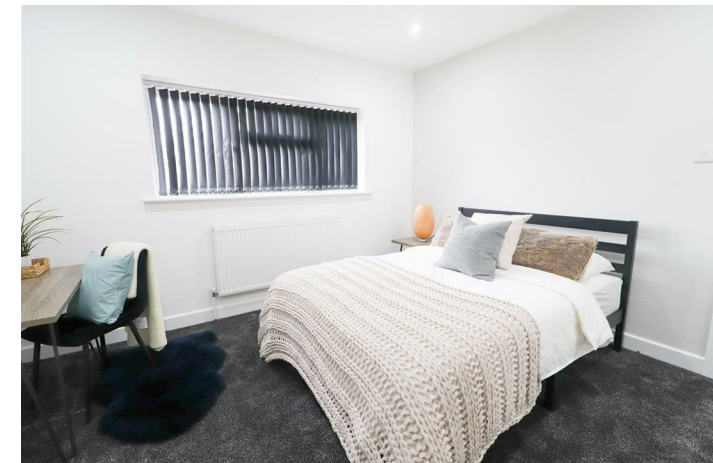
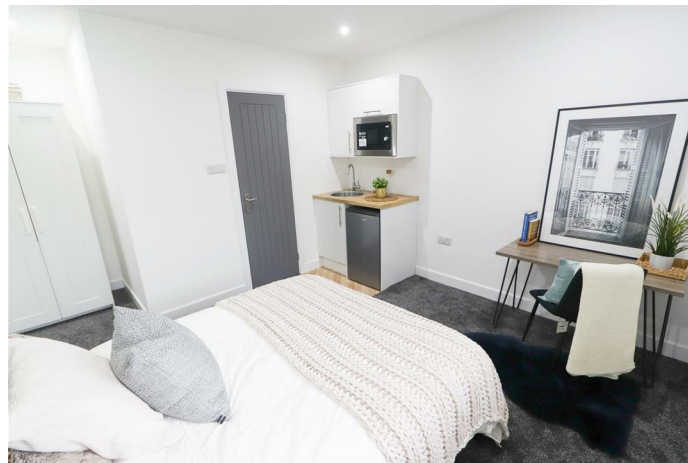
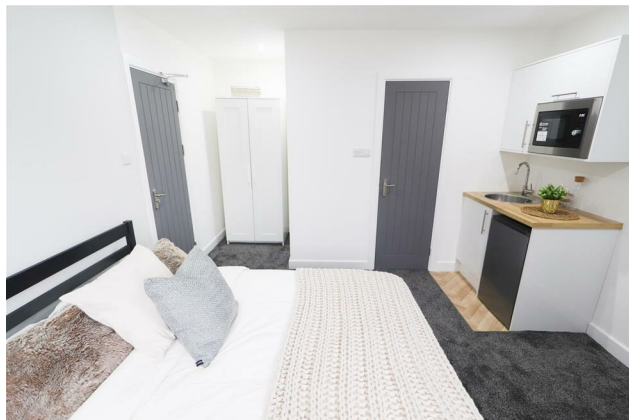
\*0% DEPOSIT OPTION AVAILABLE A beautifully presented brand new studio room located on Charter Avenue in the heart of Canley. Each room comes fully furnished with a kitchenette comfortable double bed, wardrobe, desk and chair, making it ideal for both studying and relaxing. The room also benefits from its own private en-suite bathroom and a convenient kitchenette area complete with a fridge and microwave — perfect for comfortable, independent living.

Centre, and with excellent bus links to Coventry city centre, this property is perfect for students or professionals.

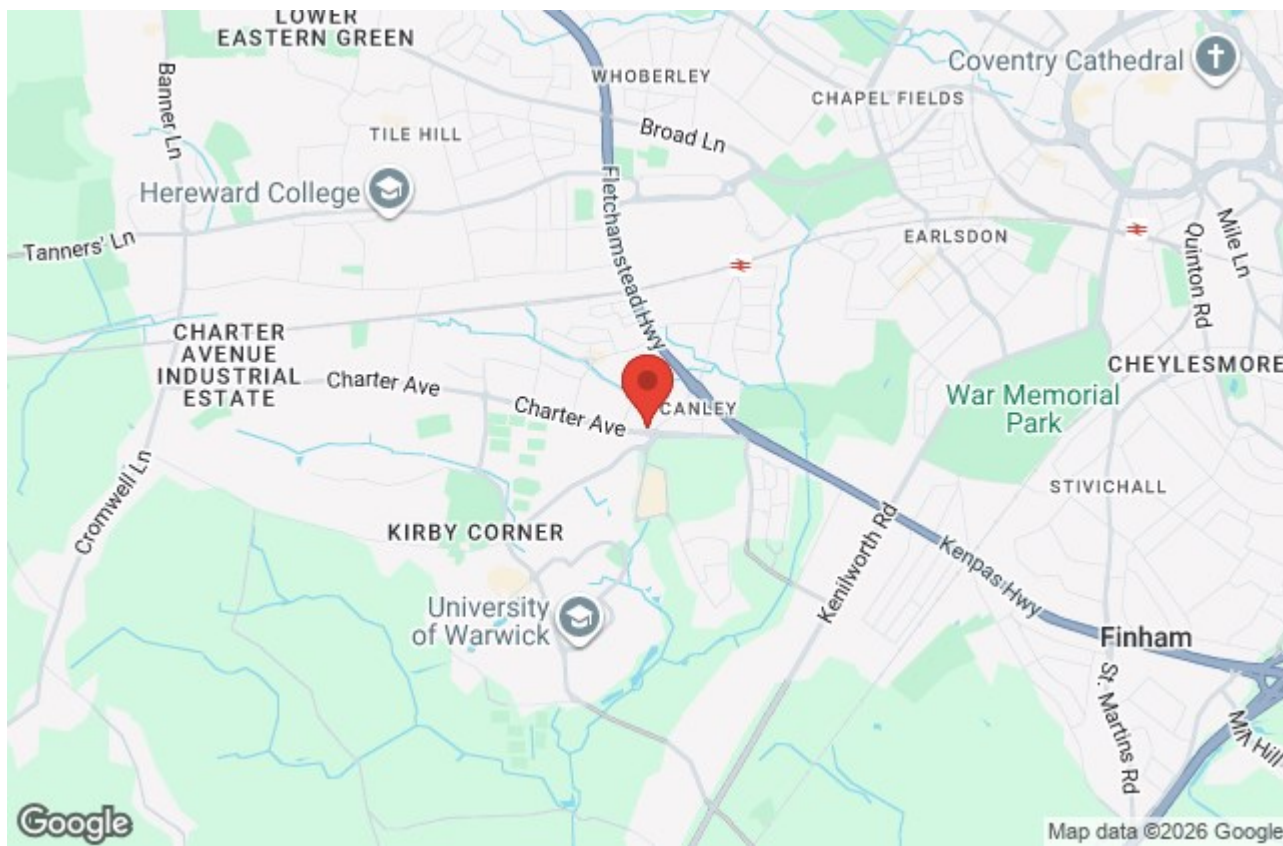
Available now! Enquire today to arrange a viewing!

The property offers access to a spacious shared communal area, ideal for socialising or unwinding. All bills are included in the rent, providing hassle-free living with no hidden costs.

Ideally situated within walking distance of Warwick University, Cannon Park Shopping







Prominence Estates  
5 Queen Isabels Avenue,  
Cheylesmore,  
Coventry,  
CV3 5GE

02476 309 826  
lettings@prominenceestates.com  
www.prominenceestates.com

  
**PROMINENCE**  
ESTATES