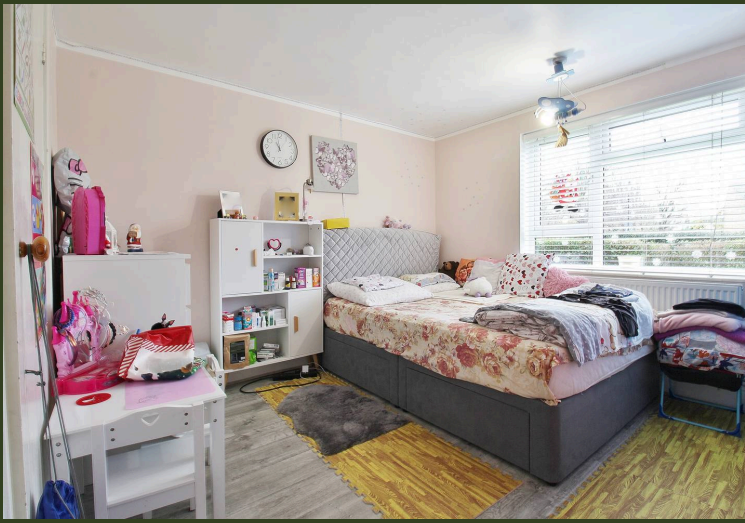


14 Percy Gardens, Isleworth – TW7 6BX

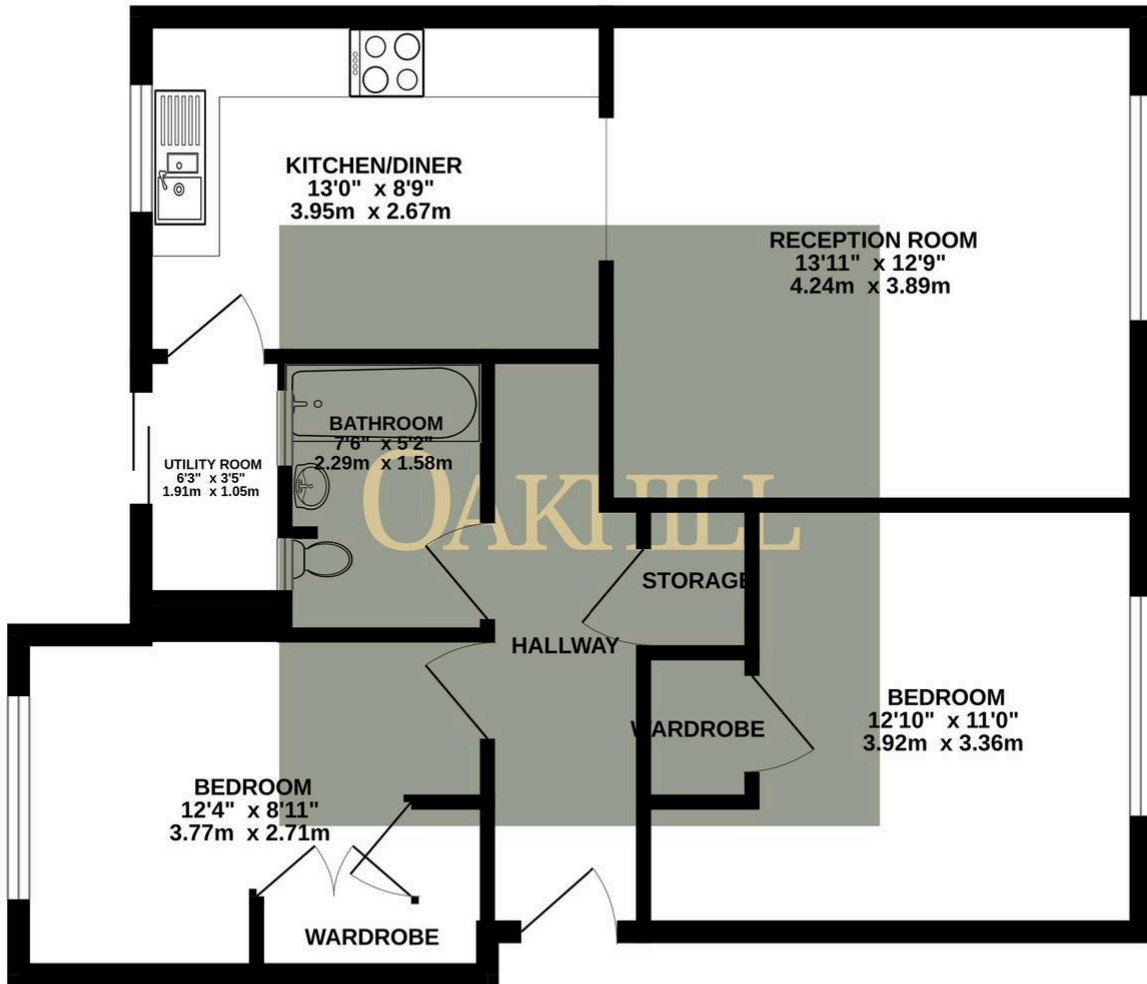
£375,000 Leasehold

Situated in Old Isleworth, this spacious two double bedroom, ground floor flat is offered to the market with no forward chain. Ideally located for access to public transport, a choice of local schools and amenities, the property is well presented throughout. The accommodation consists of a welcoming hallway, two double bedrooms with built in wardrobes, modern family bathroom, spacious reception room, well presented kitchen/diner, utility room and a spacious private rear garden. The property also benefits from a long lease, ample internal storage, a large external storage unit, double glazing, gas central heating and resident permit parking.

OAKHILL



GROUND FLOOR



Whilst every attempt has been made to ensure the accuracy of the floorplan contained here, measurements of doors, windows, rooms and any other items are approximate and no responsibility is taken for any error, omission or mis-statement. This plan is for illustrative purposes only and should be used as such by any prospective purchaser. The services, systems and appliances shown have not been tested and no guarantee as to their operability or efficiency can be given.
Made with Metropix ©2024



