



60 Lockyer Estate Kipling Street London

£3,000 Per

LEONARD LEESE present to market this superbly located, split level three double bedroom apartment. Refurbished throughout, the property offers wood floors and modern fittings. Comprising a spacious living room, modern kitchen, bathroom, separate w/c and three double bedrooms. Set on the 2nd floor of a small block only three mins from Borough tube and London Bridge Station. Also close to Bermondsey St. which offers an array of bars and restaurants. Perfect for sharers and available now, an early viewing is recommended.

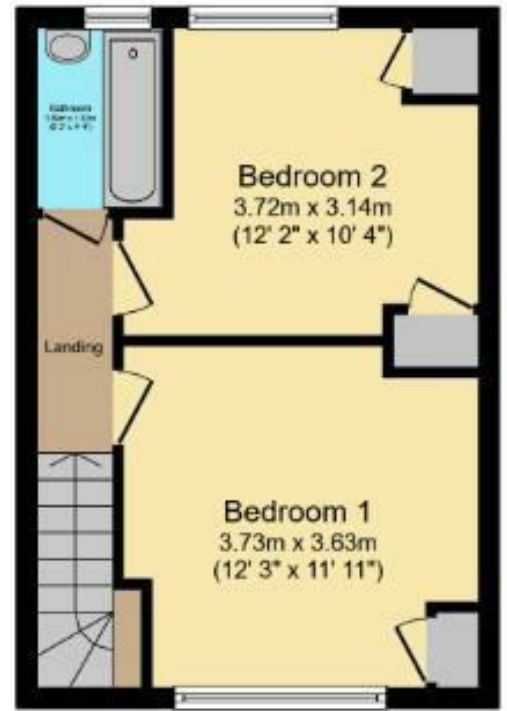
Call the lettings department to reserve a viewing on 0207 015 1360.



• Three Double Bedrooms • Split Level • Superb Location • Furnished







Total floor area 75.2 sq.m. (810 sq.ft.) approx



| Energy Efficiency Rating | | |
|---|-------------------------|-----------|
| | Current | Potential |
| Very energy efficient - lower running costs | | |
| (92 plus) A | | |
| (81-91) B | | |
| (69-80) C | 69 | 73 |
| (55-68) D | | |
| (39-54) E | | |
| (21-38) F | | |
| (1-20) G | | |
| Not energy efficient - higher running costs | | |
| England & Wales | EU Directive 2002/91/EC | |

Agents Note: Whilst every care has been taken to prepare these particulars, they are for guidance purposes only. All measurements are approximate and are for general guidance purposes only and whilst every care has been taken to ensure their accuracy, they should not be relied upon and potential buyers/tenants are advised to recheck the measurements

Borough Lettings
230 Borough High Street
London
SE1 1JX

020 7015 1360
enquiries@leonardleese.com
www.leonardleese.com

