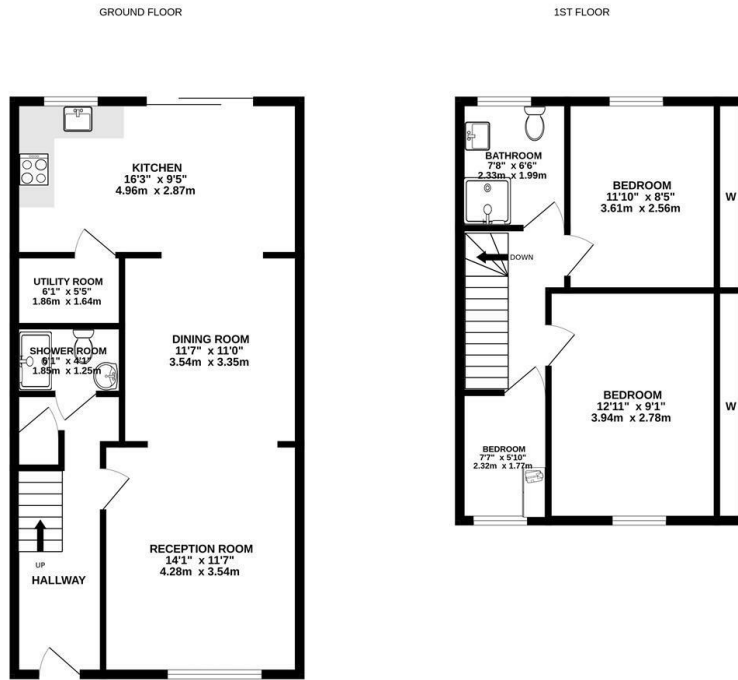




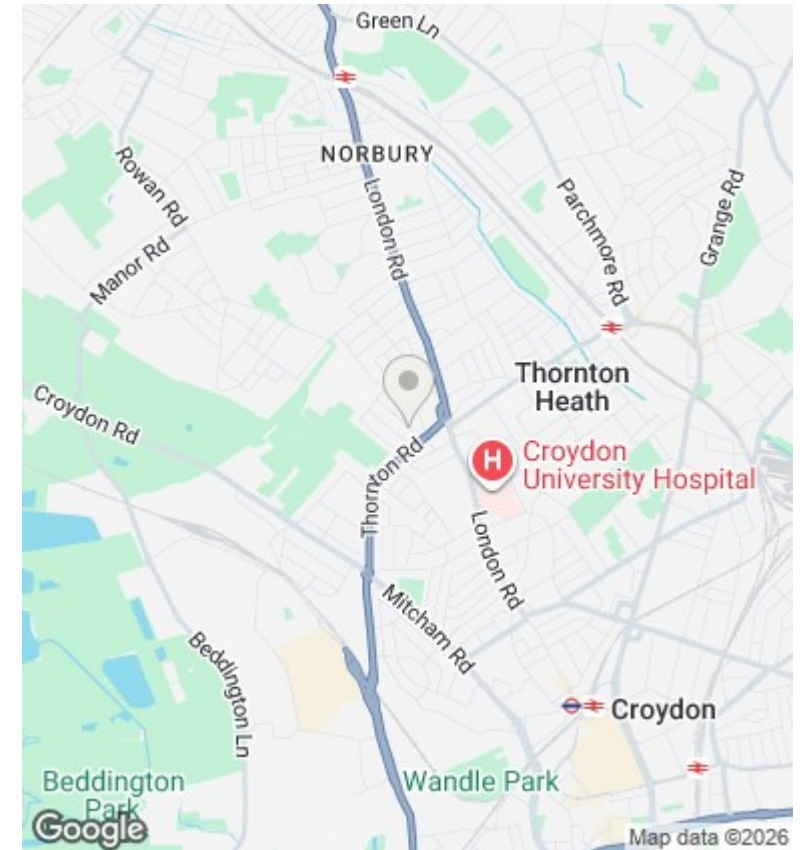
29 Silverleigh Road, Thornton Heath, CR7 6DY

Asking Price £490,000

- Three-bedroom house
- Modern open-plan double reception
- Upstairs bathroom
- Popular residential location
- Two large double bedrooms and single bedroom
- Open-plan kitchen and dining area
- Additional ground floor bathroom
- Built-in wardrobes in all bedrooms
- French doors leading to private garden
- Bright and airy throughout



Whilst every attempt has been made to ensure the accuracy of the floorplan contained herein, measurements of doors, windows, rooms and any other items are approximate and no responsibility is taken for any error, omission or misstatement. This plan is for information purposes only and should be used as such by any prospective purchaser. The services, systems and appliances shown have not been tested and no guarantee is given as to their operability or efficiency over time.
Made with Metropix (2020)



Directions

Viewings

Viewings by arrangement only. Call 0208 681 8133 to make an appointment.

Council Tax Band

D

EPC Rating: