



St. Lawrence Avenue, Ramsgate, Kent **£399,995**





YOUR MOVE





St. Lawrence Avenue,
Ramsgate, Kent

£399,995



Semi-detached Family Home
For full EPC please contact the branch

Property Description

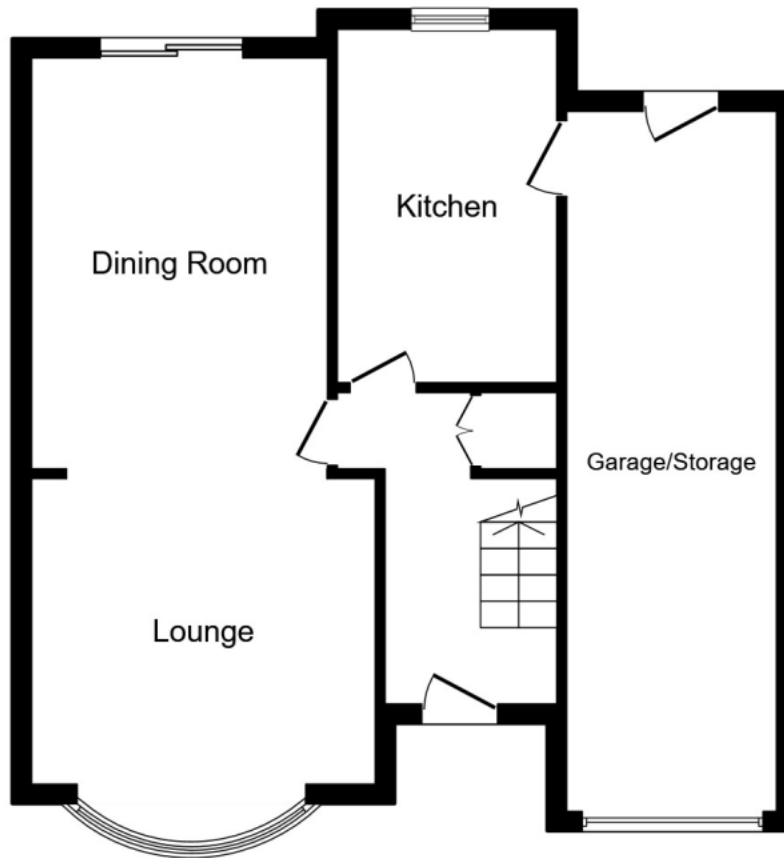
**** RAMSGATE'S PREMIER LOCATION AND HUGELY SOUGHT AFTER!, FANTASTIC THREE BEDROOM SEMI-DETACHED HOME, OVER 100FT REAR GARDEN, DRIVEWAY, GARAGE, OPEN-PLAN LOUNGE/DINING AREA, A MUST VIEW!!!**** This superb semi-detached home has huge curb appeal and briefly comprises of an entrance porch, entrance hallway - with some lovely stained glass, large lounge area opening onto a spacious dining room, and a good-sized kitchen area. On the first floor there are three bedrooms, a large master with two built-in double wardrobes, an equally large second bedroom with FOUR built-in double wardrobes and a smaller third bedroom, and a bathroom, with a separate WC, and storage cupboard. On the external the property benefits from a mature front garden, driveway, large garage with ample room for storage and can be accessed via the kitchen and

Our View

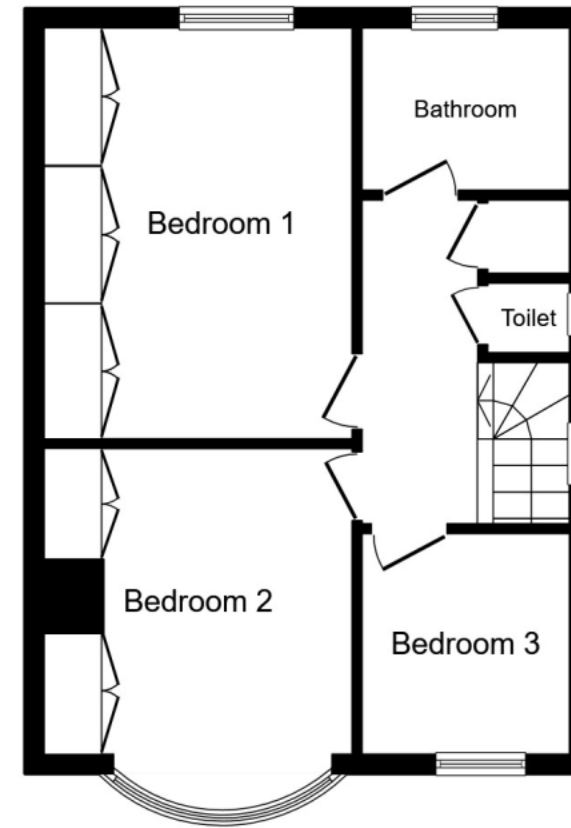
These properties are highly sought after and seldom spend long on the market, this particular example has fantastic curb appeal, a HUGE rear garden, well over 100ft!, lots of living space, three good-sized bedrooms, driveway & garage. The property also has lots of potential for expansion and will makes for an absolutely ideal 'forever' family home.

Location

Truly one of Ramsgates Premier locations, St Lawrence Avenue is just off London Road on the West side of Ramsgate, and is within walking distance the clifftop promenade/boating pool over looking Ramsgate Marina and also the historic Royal Harbour. There are also some fantastic local secondary and primary schools - including



Ground Floor



First Floor

This floor plan is for illustrative purposes only. It is not drawn to scale. Any measurements, floor areas (including any total floor area), openings and orientation are approximate. No details are guaranteed, they cannot be relied upon for any purpose and they do not form part of any agreement. No liability is taken for any error, omission or misstatement. A party must rely upon its own inspection(s).
Plan produced for Your Move. Powered by www.focalagent.com

IMPORTANT NOTE TO PURCHASERS: We endeavour to make our sales particulars accurate and reliable, however, they do not constitute or form part of an offer or any contract and none is to be relied upon as statements of representation or fact. The services, systems and appliances listed in this specification have not been tested by us and no guarantee as to their operating ability or efficiency is given. All measurements have been taken as guide to prospective buyers only, and are not precise. Floor plans where included are not to scale and accuracy is not guaranteed. If you require clarification or further information on any points, please contact us, especially if you are travelling some distance to view. Fixtures and fittings other than those mentioned are to be agreed with the seller.

The Your Move branch is operated by National Home Move Limited which is independently owned and operated under a licence from your-move.co.uk Limited. National Home Move Limited is registered in England and Wales with company number 11805074, registered office: 5 Brooklands Place, Brookland Road, Sale, United Kingdom, M33 3SD. VAT Reg No: 315255523.

48 Queen Street, Ramsgate, Kent, CT11 9EE
01843 584 848 * Ramsgate@your-move.co.uk

*Calls may be recorded and/or monitored for training and/or security purposes.

