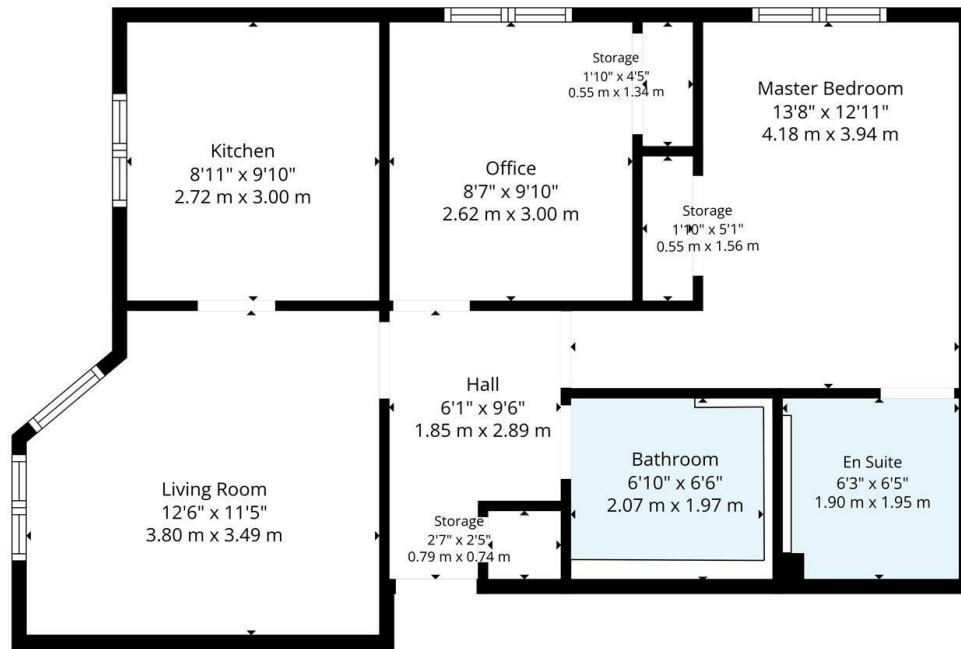




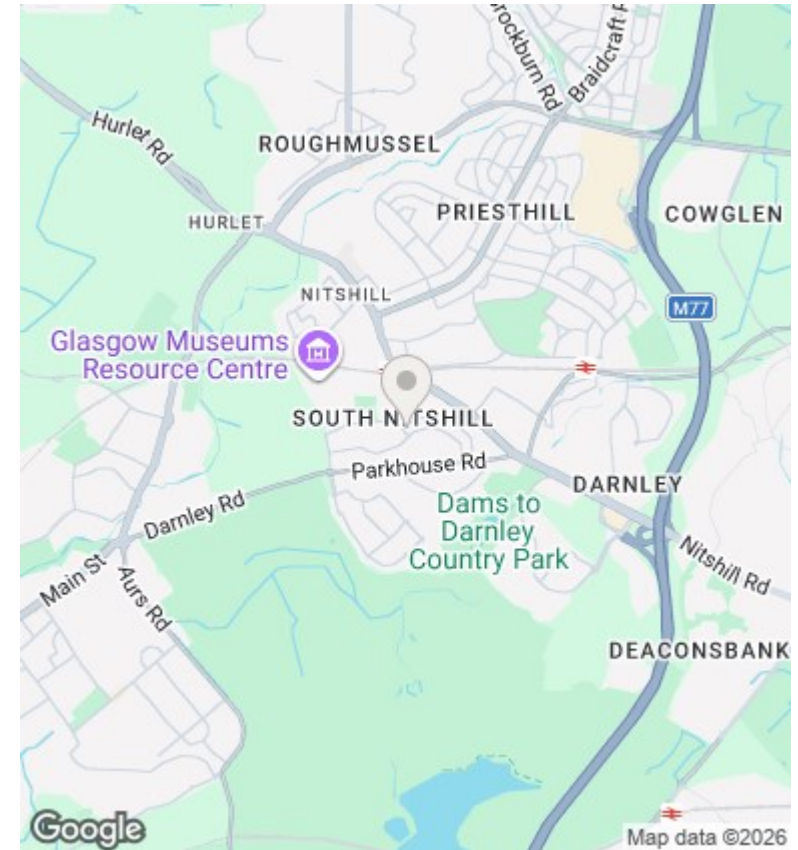
1/2, 41 Whitehaugh Road, South Nitshill, Glasgow, G53 7JQ

Offers Over £140,000

- Superb first floor apartment in a popular southside modern development
- Separate main bathroom
- Residents parking
- EER Band B
- Two double sized bedrooms
- Excellent condition throughout
- Security entry and well maintained communal close
- Master en-suite shower room
- Stylish lounge with modern kitchen off
- Close to Silverburn



TOTAL: 600 sq. ft, 56 m2
 1st floor: 600 sq. ft, 56 m2
 EXCLUDED AREAS: STORAGE: 24 sq. ft, 3 m2, WALLS: 55 sq. ft, 5 m2
Floor Plan Created By Cubicase App. Measurements Deemed Highly Reliable But Not Guaranteed.



Directions

Viewings

Viewings by arrangement only. Call 01417262111 to make an appointment.

Council Tax Band

EPC Rating:

B

Energy Efficiency Rating		Current	Potential
<i>Very energy efficient - lower running costs</i>			
(92 plus) A			
(81-91) B		83	83
(69-80) C			
(55-68) D			
(39-54) E			
(21-38) F			
(1-20) G			
<i>Not energy efficient - higher running costs</i>			
Scotland	EU Directive 2002/91/EC		