



ST MARKS ROAD, W10

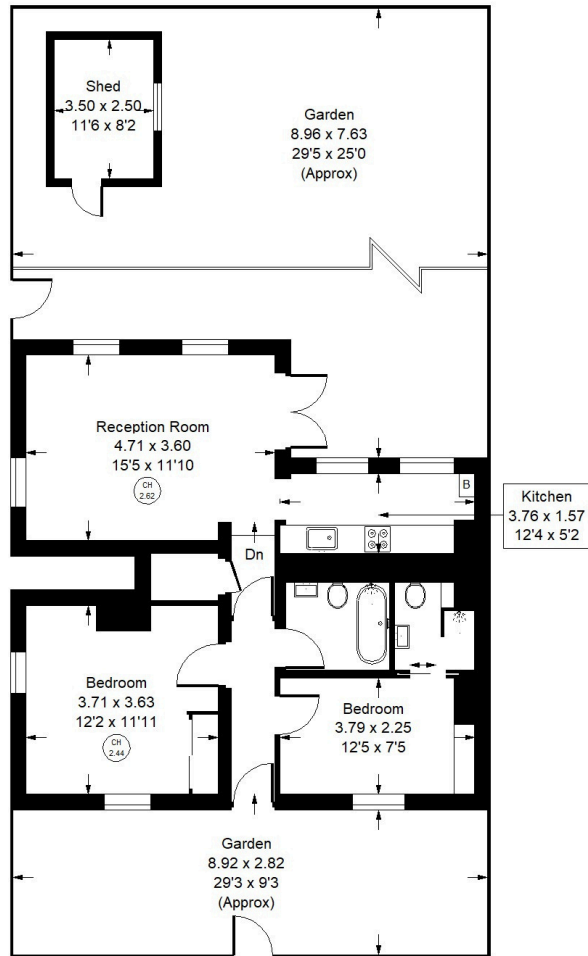


## St Marks Road, W10

A well-presented ground floor maisonette with private front and rear gardens. The property features a bright reception room opening onto the rear garden, complete with a patio area, lawn, and storage shed, alongside a long modern kitchen benefitting from garden views. The principal bedroom is generously sized, while the second double bedroom, currently arranged as a study, benefits from an en suite shower room, and there is a further modern bathroom. St Marks Road is between Ladbroke Grove and Golborne Road which has an array of independent cafés, restaurants and local shops. Ladbroke Grove underground station is nearby providing the Hammersmith and City line.



Approx. Gross Internal Area  
= 62 sq m / 667 sq ft



Ground Floor



## St Marks Road, W10 - Leasehold

Local Authority - Royal Borough of Kensington & Chelsea

- Two Bedrooms
- Private Garden
- Bright Reception Room
- Private Entrance
- EPC Rating = D
- Council Tax Band = C



Whilst every attempt has been made to ensure the accuracy of the floor plan, measurements are approximate and not to scale. No guarantee is given on the total square footage of the property quoted on the plan. Figures given are for guidance. Plan is for illustration purposes only, not to be used for valuations.