



Price
£500,000

Freehold

4x  2x  1x 

**Coach House Mews,
Horsham Road, Cowfold,
West Sussex, RH13**

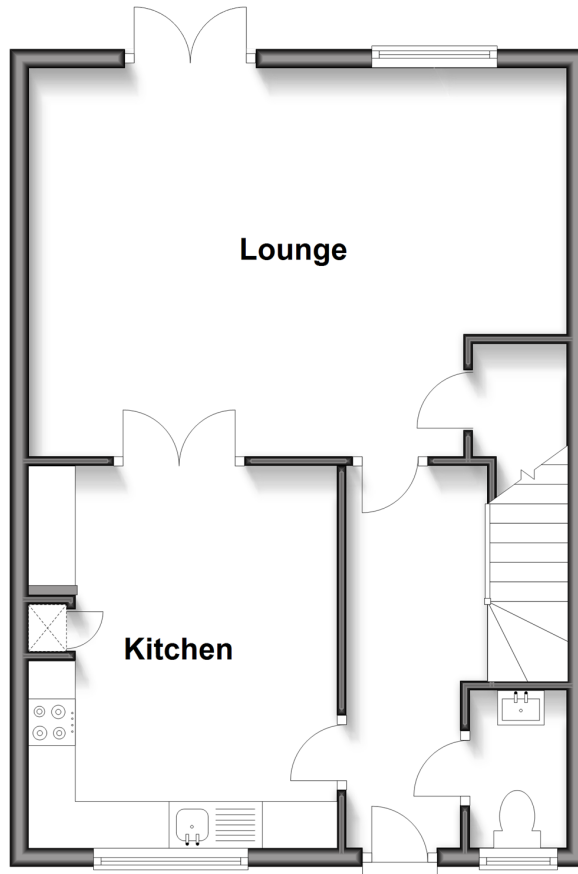
OVER 60?

Secure this property
for up to **59% less!**

cubitt&west
Helping you move forwards

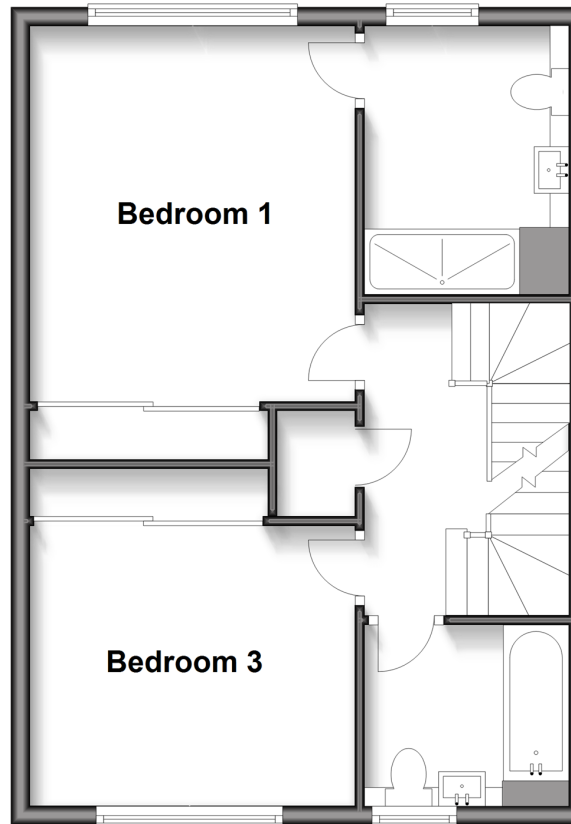
Ground Floor

Approx. 48.2 sq. metres (518.8 sq. feet)



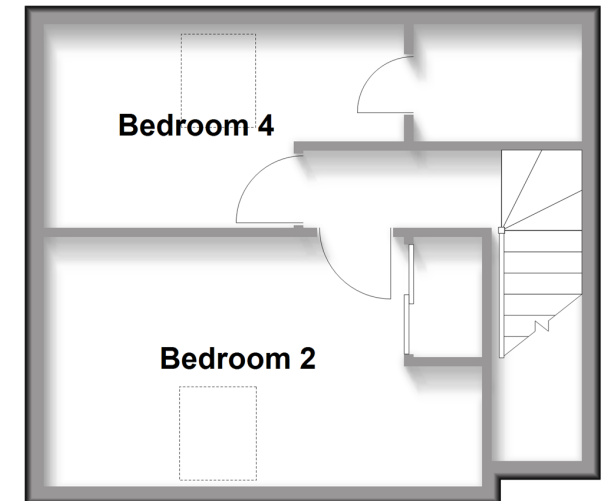
First Floor

Approx. 48.2 sq. metres (518.8 sq. feet)



Second Floor

Approx. 28.2 sq. metres (304.0 sq. feet)



Accommodation

GROUND FLOOR

Entrance Hall

Cloakroom

Kitchen: 13'6 x 10'10 (4.12m x 3.30m)

Lounge: 18'10 at widest point x 13'7 at widest point (5.74m x 4.14m)

FIRST FLOOR

Landing

Bathroom: 7'0 x 5'8 (2.14m x 1.73m)

Bedroom 3: 12'2 x 11'5 into fitted wardrobes (3.71m x 3.48m)

Bedroom 1: 14'11 up to fitted wardrobes x 11'5 (4.55m x 3.48m)

En Suite Shower Room: 9'4 x 6'3 (2.85m x 1.91m)

SECOND FLOOR

Landing

Bedroom 2: 15'4 into fitted wardrobes x 8'6 (4.68m x 2.59m)

Bedroom 4: 8'8 x 7'2 (2.64m x 2.19m)

Store Cupboard

OUTSIDE

Front & Rear Garden

Off Road Parking



Main features

- A beautiful mews-style modern family home offered to the market in superb condition
- Located in the heart of Cowfold Village
- Easy main road access down to the coast and up into Surrey and Gatwick
- Stunning modern and contemporary kitchen and bathrooms
- Electric security gates and driveway parking
- Low maintenance rear garden



Nearest Schools

Primary Schools: St Peter's CofE Primary 0.1 miles.
Secondary Schools: Farney Close School 3.8 miles, The Forest School, 6.3 miles, Millais 6.4 miles.
Further Education: Christ's Hospital 5.3 miles, The College of Richard Collyer 6.3 miles



Transport Information

Train Stations: Horsham 5.5 miles, Christs Hospital 5.7 miles, Littlehaven 6.3 miles



Address

Coach House Mews, Horsham Road, Cowfold, West Sussex, RH13



Directions

For directions to this property please contact us.



cubitt&west
Helping you move forwards

Call Horsham Branch 01403 269268 ■ cubittandwest.co.uk



■ Legal advice should be taken to verify fixtures/fittings, planning, alterations and/or lease details ■ Appliances & services are untested, dimensions are approximate and floor plans are not to scale
■ Through a Homewise Home For Life Plan people aged 60+ can secure this property for up to 50% less, by purchasing a Lifetime Lease.



20917583/20250901/SEH/CB