



**Prime House, 10 Banister Road, Kensal Rise**

London W10

**£625,000**



## Prime House, 10 Banister Road

Kensal Rise, London W10

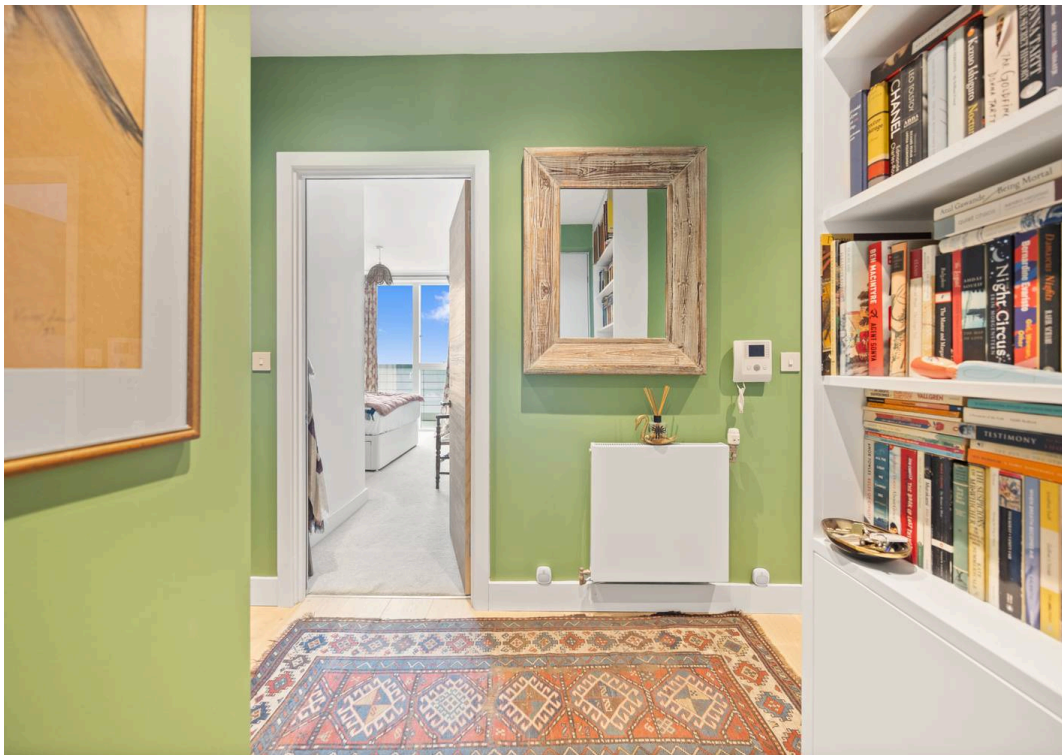
Fantastic apartment in modern development in Kensal Rise. 25ft reception room, 2 double bedrooms, 2 bathrooms, westerly facing balcony. Communal roof gardens, lift, double glazed windows, wooden flooring, video entry, high ceilings. Ideal for first-time buyers or investors. Access to sports centre. Close to Queens Park, transport links, and amenities. Lease: 241 years, Ground Rent: £350pa, Service Charge: £3,600pa.

Council Tax band: D

Tenure: Leasehold

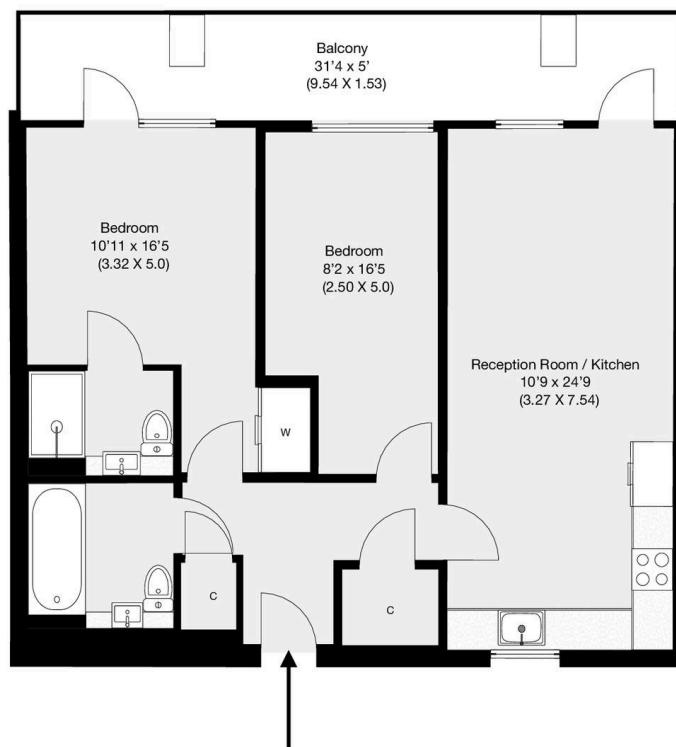
EPC Energy Efficiency Rating: B

EPC Environmental Impact Rating: A





**Prime House, London, W10**  
Approximate Gross Internal Area 69.2 sqm / 745 sqft



**Fifth Floor**

THIS FLOOR PLAN IS PRODUCED FOR GARRISON ESTATES SUBMITTED BY ARCHIMEDIA web: [www.archi-media.co.uk](http://www.archi-media.co.uk)

Whilst every attempt has been made to ensure the accuracy of the floor plan contained here, measurements of doors, windows and rooms are approximate and no responsibility is taken for any error, omission or misstatement. These plans are for representation purposes only and should be used as such by any prospective buyer or lease. Specifically no guarantee is given on the gross internal floor area of the property if quoted on this plan and any figures given is initial guidance only and should be treated as such.



## Garrison Estates

20 College Parade, Salusbury Road, Queens Park - NW6 6RN

020 4511 4820 • [contact@garrisonestates.co.uk](mailto:contact@garrisonestates.co.uk) • [www.garrisonestates.co.uk/](http://www.garrisonestates.co.uk/)