



3 Kiln Court, 271 Sturry Road, Canterbury, Kent, CT1 1DS

£900 PCM

- STUDIO
- FURNISHED PROPERTY
- DOUBLE BED
- 1 BATHROOM
- STUDENTS & PROFESSIONALS ACCEPTED
- COUPLES WELCOME
- 1 BEDROOM
- 1 RECEPTION ROOM
- COURTYARD GARDEN

3 Kiln Court, Canterbury CT1 1DS

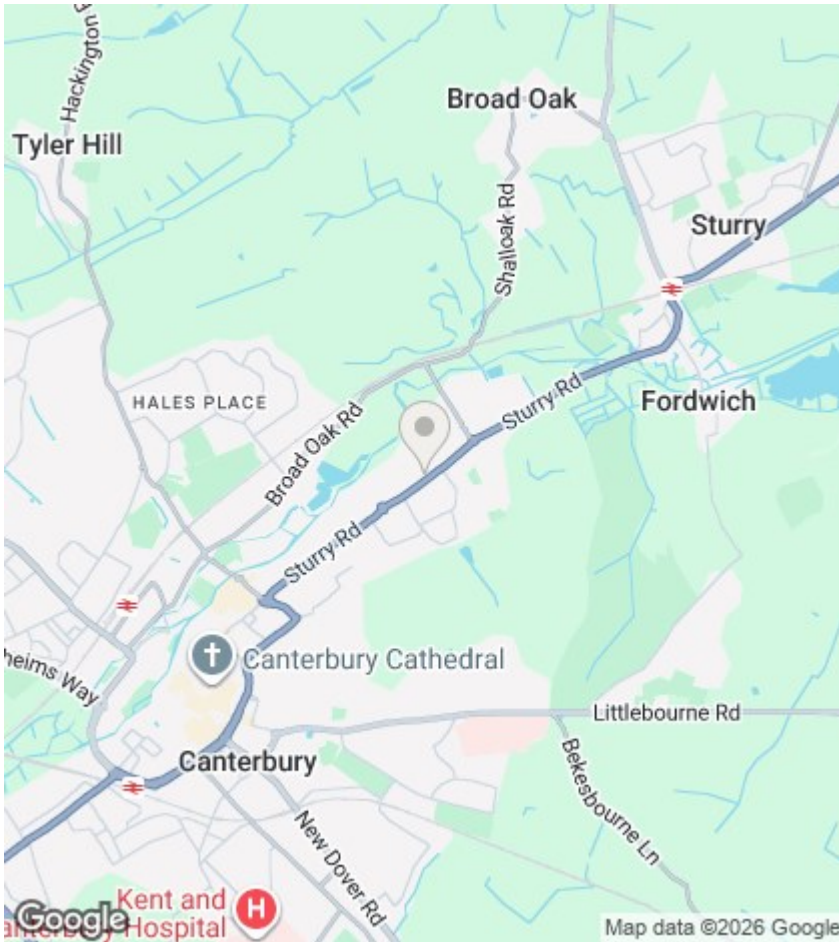
These studio apartments are furnished to a high standard, with a spacious living area, double bedroom area and en-suite bathroom. The kitchen areas are fully fitted with modern appliances including an oven and hob, microwave and washer/dryer. There is storage under the bed, and a desk and shelving fitted for those studying, or to provide a useful table for professionals. Outside there is a communal courtyard area to sit out in on sunny days, and a bicycle rack and the development has a gated entrance.

The development is in a convenient location, set back from the main Sturry Road, on the main bus route into town, just a short walk from the supermarkets.



Council Tax Band: A





Directions

Viewings

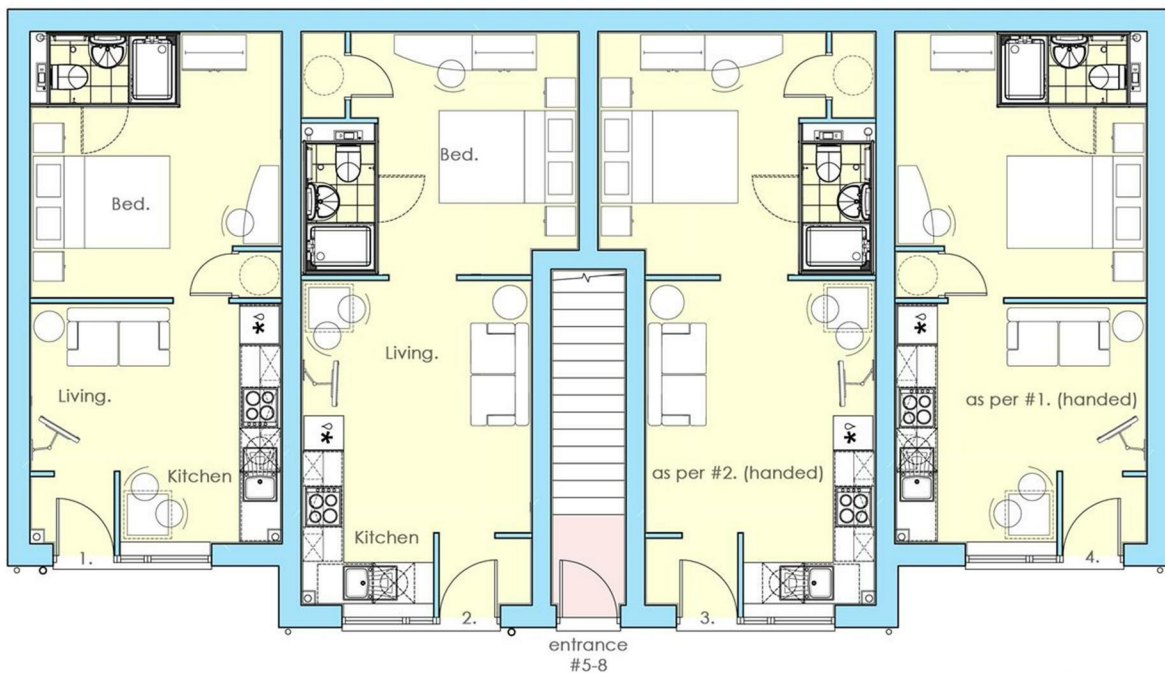
Viewings by arrangement only. Call 01227 788088 to make an appointment.

EPC Rating:

B

| Energy Efficiency Rating | | Current | Potential |
|---|--|-------------------------|-----------|
| Very energy efficient - lower running costs | | | |
| (92 plus) A | | | |
| (81-91) B | | 85 | 88 |
| (69-80) C | | | |
| (55-68) D | | | |
| (39-54) E | | | |
| (21-38) F | | | |
| (1-20) G | | | |
| Not energy efficient - higher running costs | | | |
| England & Wales | | EU Directive 2002/91/EC | |

Ground Floor Plan (nts)
1&2 - 3&4 (handed)



Land r/o 273 to 279 Sturry Road

