



## 10 Francine Close, Liverpool, Merseyside L3 6LN

£750 PCM

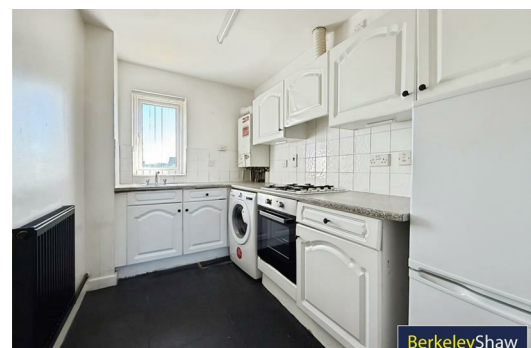
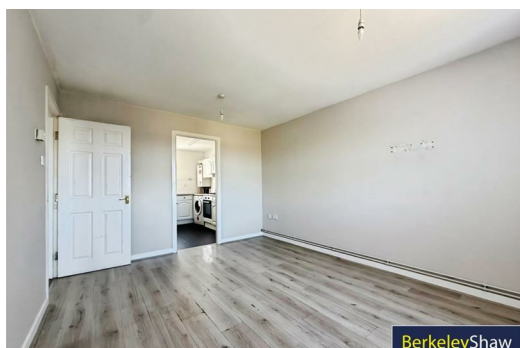
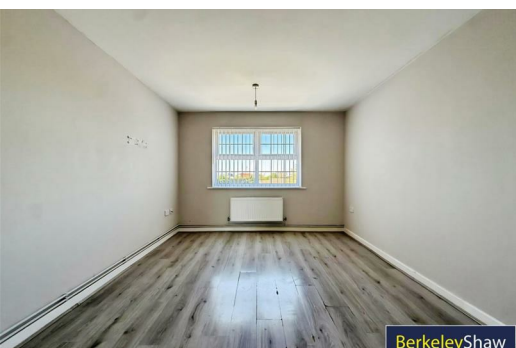
Welcome to this charming two-bedroom apartment located on Francine Close in the vibrant city of Liverpool. This delightful property offers a perfect blend of comfort and modern living, making it an ideal choice for individuals or small families seeking a welcoming home.


As you enter the apartment, you are greeted by an open living room that creates a spacious and inviting atmosphere. This area is perfect for relaxation or entertaining guests, providing a versatile space that can be tailored to your lifestyle.


The apartment features two well-proportioned bedrooms, each offering rest and relaxation. These rooms are designed to accommodate various furniture arrangements, ensuring that you can create your ideal personal space.

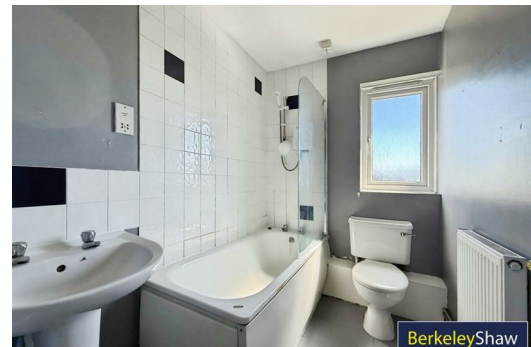
Situated in a convenient location, this property provides easy access to local amenities, transport links, and the vibrant culture that Liverpool has to offer. Whether you are looking to explore the city's rich history, enjoy its lively entertainment scene, or simply relax in your new home, this apartment is perfectly positioned to meet your needs.

Deposit - £ 865  
Council Tax Band - C



Energy Efficiency Rating		
	Current	Potential
Very energy efficient - lower running costs		
(92 plus) <b>A</b>		
(81-91) <b>B</b>		
(69-80) <b>C</b>		
(55-68) <b>D</b>		
(39-54) <b>E</b>		
(21-38) <b>F</b>		
(1-20) <b>G</b>		
Not energy efficient - higher running costs		
	80	80
EU Directive 2002/91/EC 		

Environmental Impact (CO <sub>2</sub> ) Rating		
	Current	Potential
Very environmentally friendly - lower CO <sub>2</sub> emissions		
(92 plus) <b>A</b>		
(81-91) <b>B</b>		
(69-80) <b>C</b>		
(55-68) <b>D</b>		
(39-54) <b>E</b>		
(21-38) <b>F</b>		
(1-20) <b>G</b>		
Not environmentally friendly - higher CO <sub>2</sub> emissions		
EU Directive 2002/91/EC 		



Berkeley Shaw Estate Agents Limited.  
Company No. 0784754

Berkeley Shaw Real Estate Limited.  
Company No. 05206927

