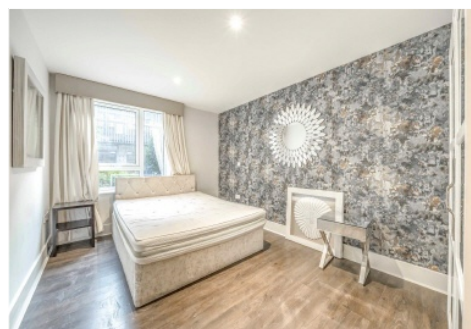
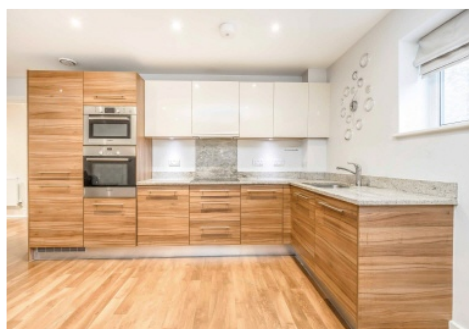


Colin Dean Residential

in partnership with Dexters



Howard Road, HA7

£2,195 pcm

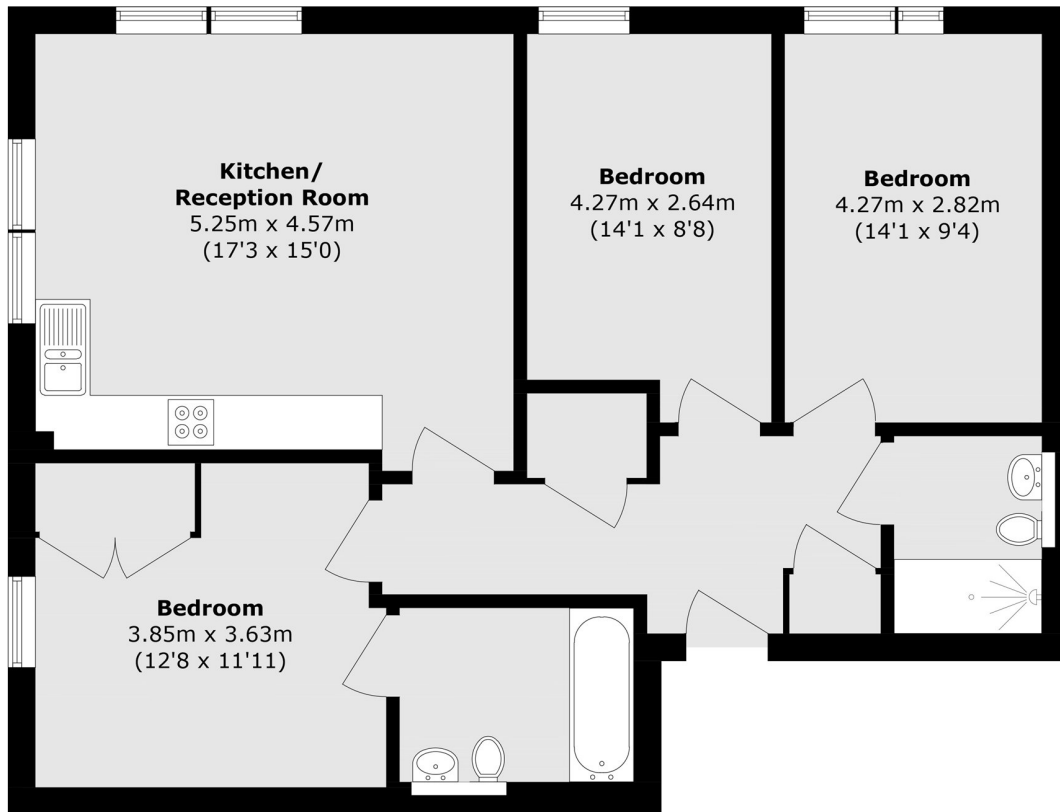
This modern three bedroom, ground-floor apartment is bathed in natural sunlight from every angle. The property features two contemporary fitted bathrooms, including a private en-suite to the master bedroom, impressive large windows throughout, and a spacious open-plan kitchen equipped with modern integrated appliances. Energy Rating: B.

The property is situated in within close proximity to local shops, bus stops and popular schools nearby. Canons Park station (Jubilee line) is approximately 0.7 Miles away.

- New Build Development • Three Bedrooms • Two Bathrooms •
- Modern Appliances • Concierge • Central Location •

Colin Dean Residential

in partnership with Dexters



Total area (approx.): 83.9 sq. m (903.3 sq. ft)

Colin Dean Residential

350 Pinner Road,
Harrow, HA1 4LB

020 8515 7929

daniel.murray@colindean.com

Energy Rating: B We aim to make our particulars both accurate and reliable. However they are not guaranteed; nor do they form part of an offer or contract. If you require clarification on any points then please contact us, especially if you're travelling some distance to view. Please note that appliances and heating systems have not been tested and therefore no warranties can be given as to their good working order.