



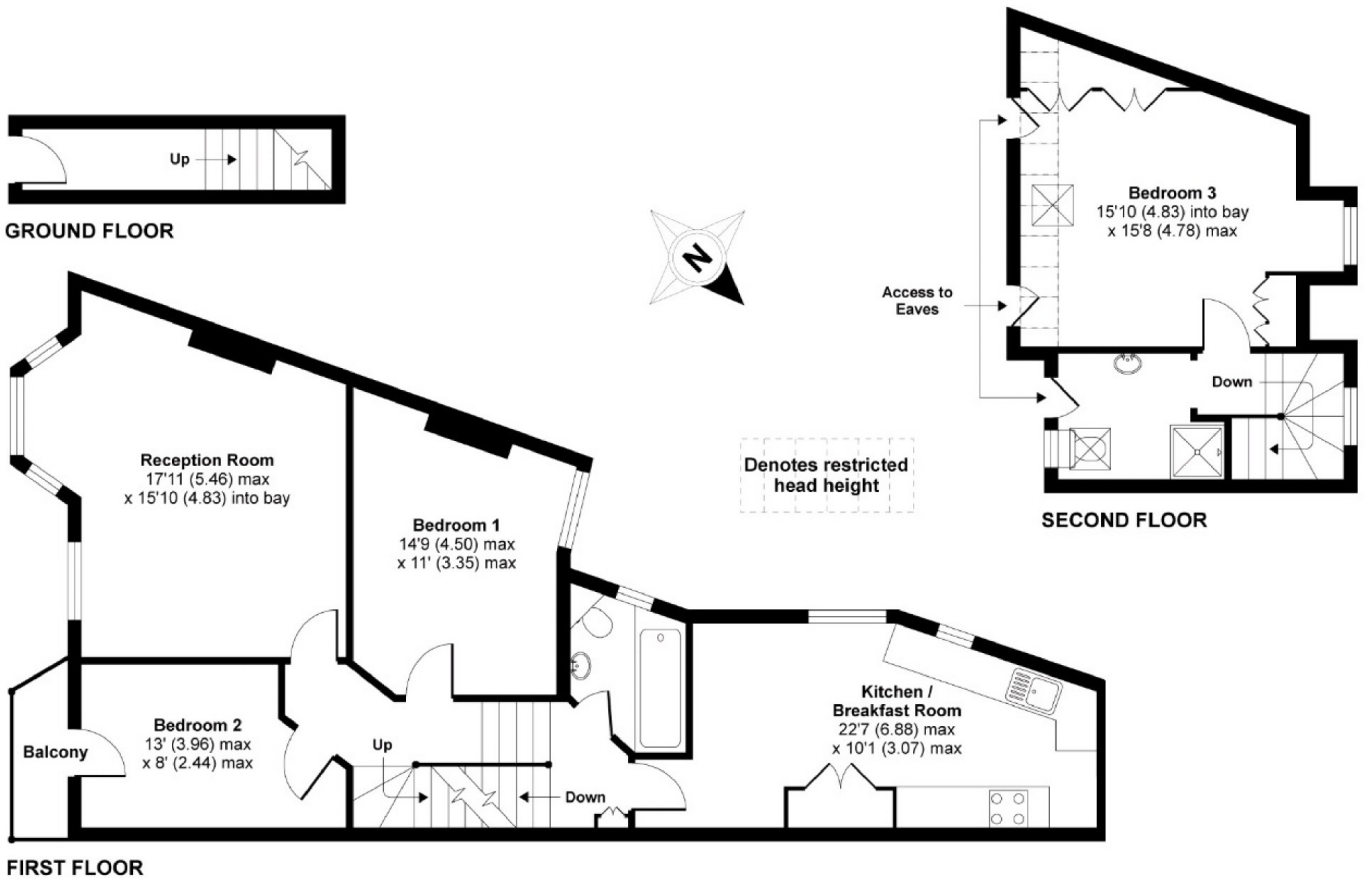
Emmanuel Road, SW12

£2,500 PCM

This stunning three bedroom maisonette, offering ample living space throughout would be ideal for a family or professional sharers.

- Split Level
- Large Reception Room
- Modern Fitted Kitchen
- Three Double Bedrooms
- Two Modern Fitted Bathrooms
- Close to Balham Station

For further information on the costs associated with renting a property, please pop into our office or visit our website.



APPROX. GROSS INTERNAL FLOOR AREA 1086 SQ FT 101 SQ METRES (EXCLUDES RESTRICTED HEAD HEIGHT)

Emmanuel Road, London, SW12

Copyright nichecom.co.uk 2014 Produced for Jacksons the Independent Estate Agents REF : 660367

Jacksons Balham
 8-11 Balham Station Road
 London
 SW12 9SG
 020 8675 6565
balham.lettings@jacksonsestateagents.com

Energy Rating: D We aim to make our particulars both accurate and reliable. However they are not guaranteed; nor do they form part of an offer or contract. If you require clarification on any points then please contact us, especially if you're traveling some distance to view. Please note that appliances and heating systems have not been tested and therefore no warranties can be given as to their good working order.