

FLETCHERS

ESTATE AGENTS



Marlborough Road, W4

£475,000

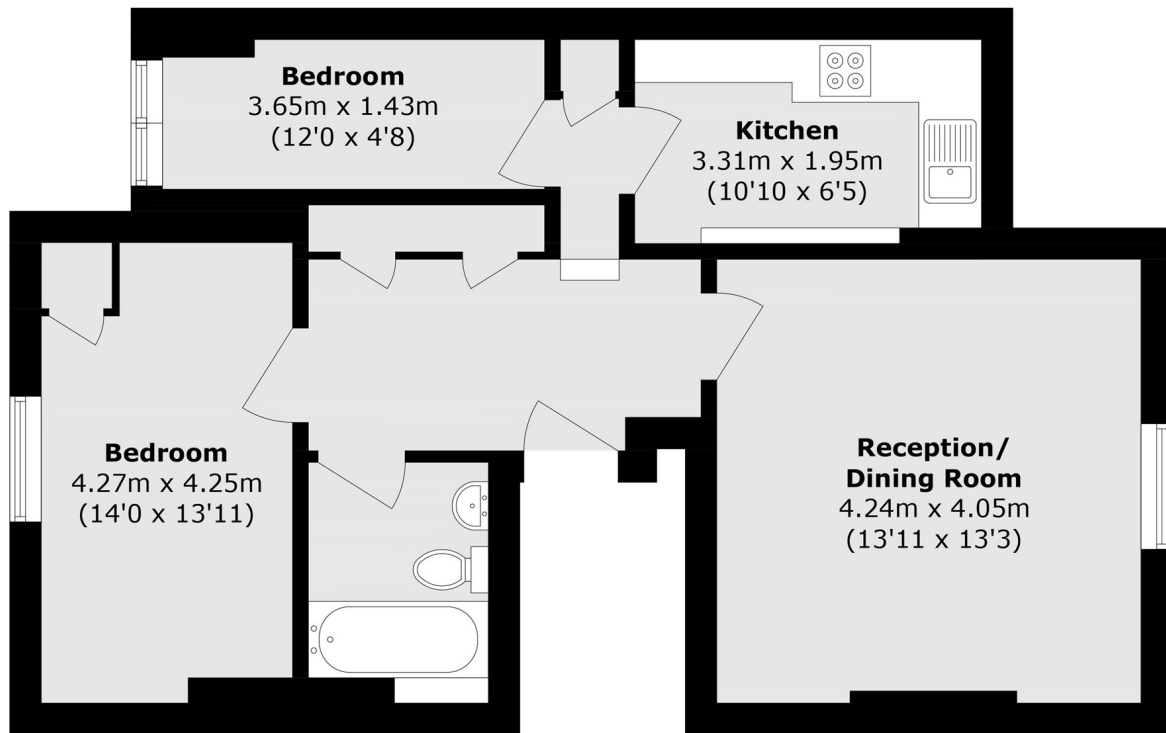
A top floor apartment within a charming semi detached Edwardian home on one of Chiswick's most centrally located roads. The property benefits from a separate kitchen, spacious reception room and two bedrooms, and is sold with no onward chain.

Marlborough Road is a residential, sought after street just moments from Chiswick High Road, and a few minutes walk from both Chiswick Park and Gunnersbury station. A superb array of shops, restaurants and cafés are on the doorstep, as well as easy access by car via the A4/M4.

- Top Floor Flat • Period Conversion • Two Bedrooms • Separate Kitchen • Ideal Location • No Onward Chain •

FLETCHERS

ESTATE AGENTS



Total area (approx.): 55.5 sq. m (597.4 sq. ft)

Fletchers Chiswick Turnham Green Sales
58 Turnham Green Terrace, London, W4 1QP
020 8987 3000
chiswicksales@fletcherestates.com

Energy Rating: D. We aim to make our particulars both accurate and reliable. However they are not guaranteed; nor do they form part of an offer or contract. If you require clarification on any points then please contact us, especially if you're traveling some distance to view. Please note that appliances and heating systems have not been tested and therefore no warranties can be given as to their good working order.