



# Longfield House

Longfield Drive, SW14

£1,350 per month  
(£311.54 per week)

A charming, fully furnished, ground floor studio apartment in immaculate condition located in a sought after quiet Parkside location.

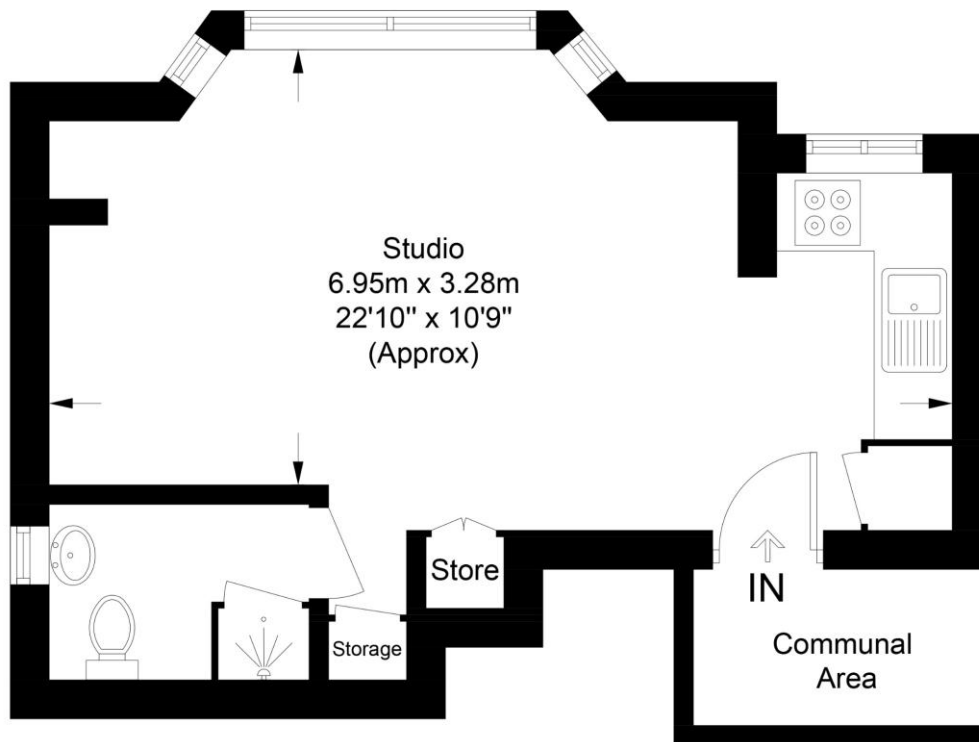
The property benefits from having access to extensive communal gardens, with a gate to Sheen Common, off street parking and oak flooring.

All bills included.

**CHESTERTONS**

# Longfield House

Approximate Gross Internal Area = 26.5 sq m / 285 sq ft



Featherstone Leigh Ltd

Every attempt is made to assure accuracy, however measurements are approximate and for illustrative purposes only. Not to scale. (ID1007382)

**Deposit Required:** £1,557.69  
**Local Authority:** London Borough of Richmond upon Thames  
**Council Tax Band:** E  
**EPC Rating:** C  
**Furnished**

Energy Efficiency Rating		Current	Potential
Very energy efficient - lower running costs			
(92+)	A		
(81-91)	B	82	82
(69-80)	C		
(55-68)	D		
(39-54)	E		
(21-38)	F		
(1-20)	G		
Not energy efficient - higher running costs			
England, Scotland & Wales		EU Directive 2002/91/EC	

## Chestertons East Sheen Lettings

254a Upper Richmond Road West  
 East Sheen  
 London  
 SW14 8AG  
 sheenlettingsusers@chestertons.co.uk  
 02081040580  
[chestertons.co.uk](http://chestertons.co.uk)

Additional tenant charges apply (fees apply to non-AST tenancies only)

Tenancy Agreement Fee: £300  
 References per Tenant/Guarantor: £60  
 Inventory check (approx. £100 – £250 inc. VAT)  
[chestertons.co.uk/property-to-rent/applicable-fees](http://chestertons.co.uk/property-to-rent/applicable-fees)

Chesterton UK Services Limited trading as Chestertons for themselves and for the vendor of this property whose agents they are, give notice that (i) these particulars do not constitute any part of an offer or contract, (ii) all statements contained within these particulars are made without responsibility on the part of Chestertons or the vendor, (iii) whilst made in good faith, none of the statements contained within these particulars are to be relied upon as a statement or representation of fact, (iv) any intending purchasers must satisfy themselves by inspection or otherwise as to the correctness of each of the statements contained within these particulars, (v) the vendor does not make or give either Chestertons or any person in their employment any authority to make or give representation or warranty whatsoever in relation to this property. Wide angle lenses may be used. ©Copyright Chestertons | Chesterton Global Ltd | Registered Office 40 Connaught Street, Hyde Park, London W2 2AB Registered Company Number 05334580.



This paper is 100% recyclable