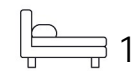




Living
made
better

Lilium Court
Dagenham, RM9 6JG



£1,600 PCM

Lilium Court, Dagenham, RM9 6JG

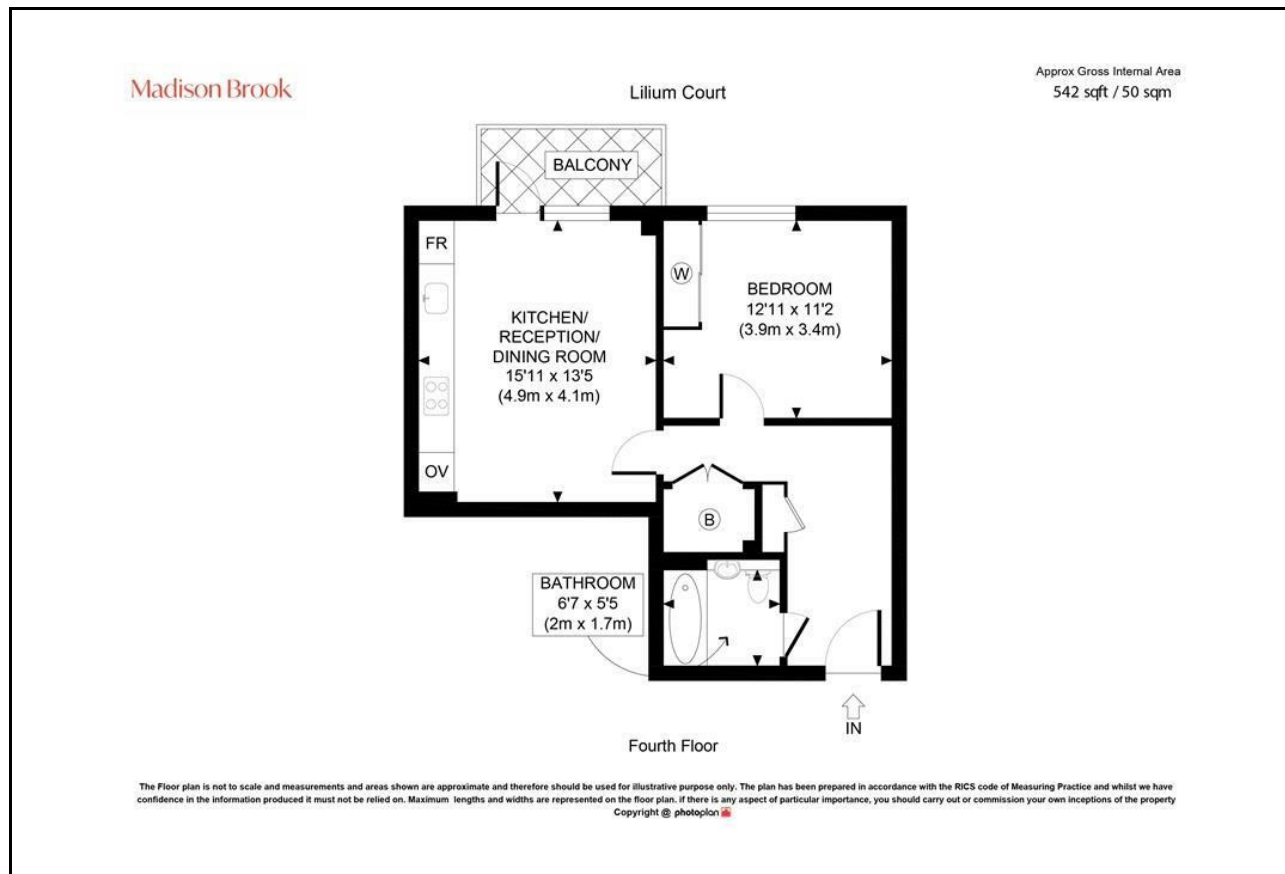
Madison Brook

Property Summary

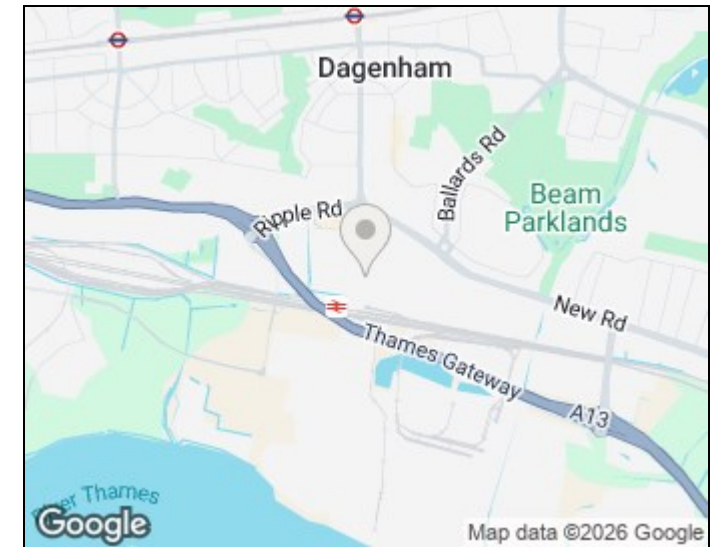
Situated on the fourth floor of the modern Lilium Court development, this immaculate one-bedroom apartment offers approximately 542 sq.ft. of contemporary living space. The property features a bright open-plan kitchen, reception and dining room with direct access to a private south-facing balcony. The spacious double bedroom is complemented by a stylish modern bathroom and excellent storage throughout. Residents benefit from a concierge service.

Conveniently positioned within walking distance of Dagenham Dock Station, the property offers excellent transport links alongside easy access to local amenities.

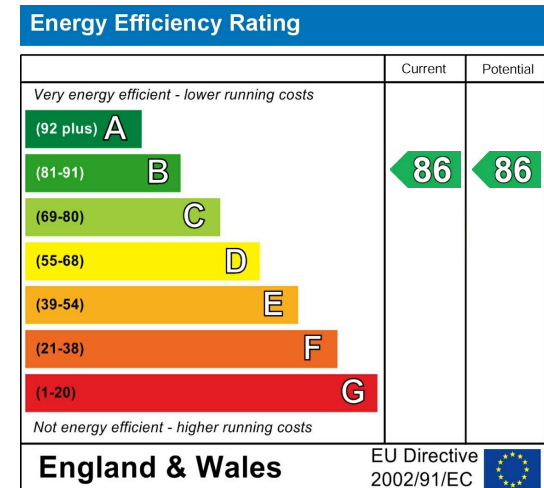
Floorplan



Area Map



Energy Efficiency Graph



These particulars, whilst believed to be accurate are set out as a general outline only for guidance and do not constitute any part of an offer or contract. Intending purchasers should not rely on them as statements of representation of fact, but must satisfy themselves by inspection or otherwise as to their accuracy. No person in this firm's employment has the authority to make or give any representation or warranty in respect of the property.

Unit B 20 Western Gateway, Royal Victoria
Dock, London, E16 1BS
Tel: 020 3946 6000 Email:
docklands@madisonbrook.com
<https://madisonbrook.com/>