



Holland House  
Fulham Reach, W6

CHESTERTONS





A superb 'turnkey' lateral apartment, benefitting from a long lease & world class facilities as part of the wider 'Fulham Reach' development.

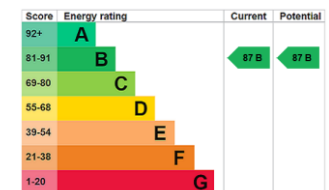
Extending to over 900 square feet of living accommodation, the property boasts a large hall with access to all principal rooms, open plan & modern kitchen, living & dining area with a good size balcony adjacent. Furthermore, the property offers two bedrooms, with the Master bedroom benefitting from an en-suite shower room, with separate family bathroom suite serving bedroom two.

Fulham Reach is an award-winning riverside development by renowned developer, St George. Situated on the banks of the River Thames close to Hammersmith Bridge, it is ideally located to take advantage of the picturesque riverside walk and cycle routes, as well as the excellent cafes, pubs and restaurants along overlooking the water.

Residents benefit from fantastic 24-hour security and concierge service, as well as a range of private amenities including a state-of-the-art gym, swimming pool and spa, cinema room, games room, virtual golf and wine cellar. Hammersmith underground station is just 0.5 miles away and offers District, Piccadilly and Hammersmith and City Line services into Central London.

- Large modern & lateral apartment
- Open kitchen, living & dining area
- Two bedrooms, two bathrooms
- Balcony adjacent to living area
- World class amenities including 24/7 concierge

Asking Price £1,200,000



**Tenure:** Leasehold 984 years 5 months  
**Service Charge:** £7130.38 PA Approx.  
**Ground Rent:** Peppercorn.  
**Local Authority:** Hammersmith & Fulham  
**Council Tax Band:** F

*Chestertons Fulham Munster Road Sales*

191 Munster Road  
 London  
 SW6 6BY

fulham@chestertons.co.uk

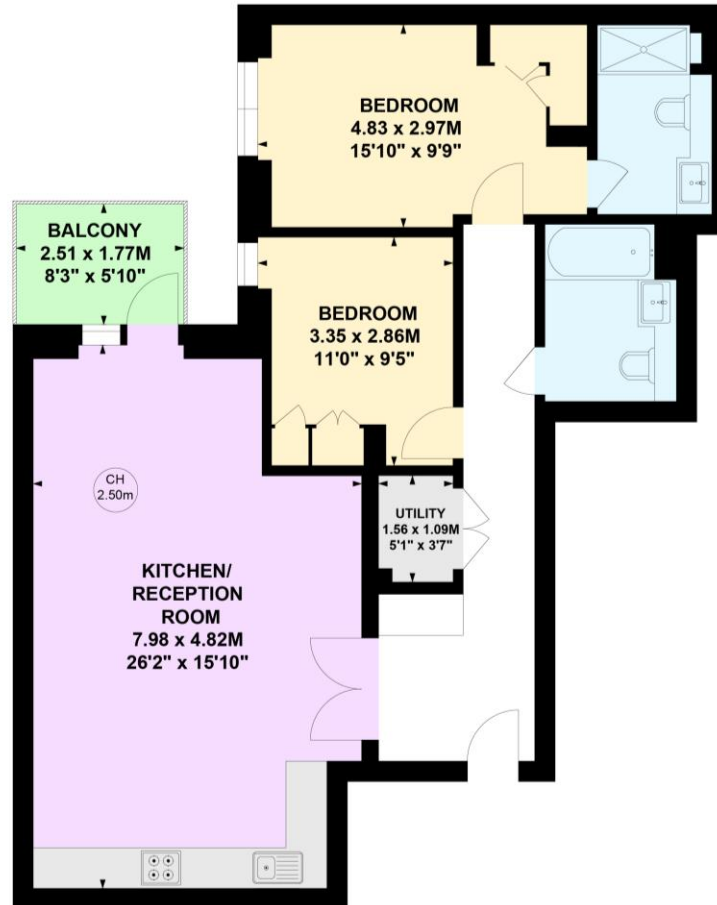
020 7471 2020

chestertons.co.uk

# Fulham Reach, W6

Approximate gross internal area  
84.23 sq m / 907 sq ft

Key :  
CH - Ceiling Height



## First Floor

This plan is not to scale and must be used as layout guidance only. All measurements and areas are approximate and should not be relied upon to provide accurate information. This plan must not be relied upon when making property valuations, design considerations or any other such relevant decisions. We accept no responsibility or liability (whether in contract, tort or otherwise) in relation to any loss whatsoever arising from or in connection with any use of this plan or the adequacy, accuracy or completeness of it or any information within it.

Chesterton UK Services Limited trading as Chestertons for themselves and for the vendor of this property whose agents they are, give notice that (i) these particulars do not constitute any part of an offer or contract, (ii) all statements contained within these particulars are made without responsibility on the part of Chestertons or the vendor, (iii) whilst made in good faith, none of the statements contained within these particulars are to be relied upon as a statement or representation of fact, (iv) any intending purchasers must satisfy themselves by inspection or otherwise as to the correctness of each of the statements contained within these particulars, (v) the vendor does not make or give either Chestertons or any person in their employment any authority to make or give representation or warranty whatsoever in relation to this property. Wide angle lenses may be used. ©Copyright Chestertons | Chesterton UK Services Limited | Registered Office 40 Connaught Street, Hyde Park, London W2 2AB Registered Company Number 05334580.



This paper is  
100% recyclable