

www.squiresestates.co.uk
SALES • LETTINGS • MANAGEMENT



Hendon Lane, Finchley, N3 3PS

£4,250 Per Week -

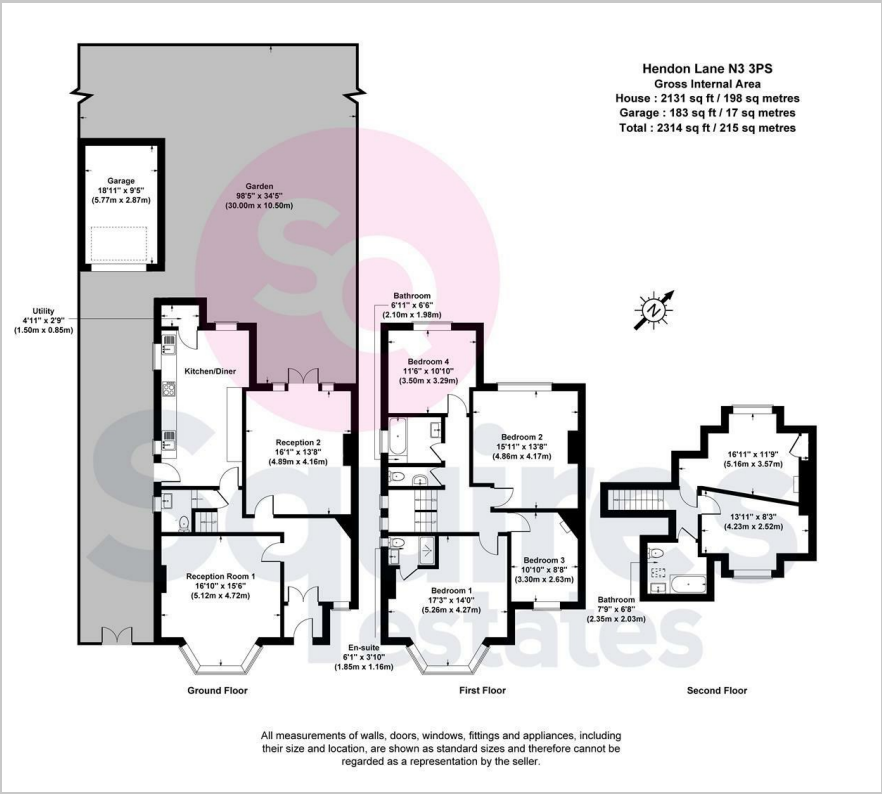
A recently refurbished 6 bedroom semi detached house located within Finchley Central. The house boasts front and rear reception rooms with a spacious eat in kitchen leading out to a 60' rear garden. Downstairs W.C., with a family bathroom with two further en suite bathrooms. The first floor affords 4 bedrooms, with 2 further bedrooms on the top floor. Off street parking along with a single garage. Available immediately.

Council tax band G
Deposit £4903.84

- 6 Bedrooms
- Semi detached House
- 2 Reception rooms
- Spacious kitchen
- Good condition throughout
- 3 Bathrooms
- Large rear garden
- Council tax band G
- Off street parking
- Available immediately



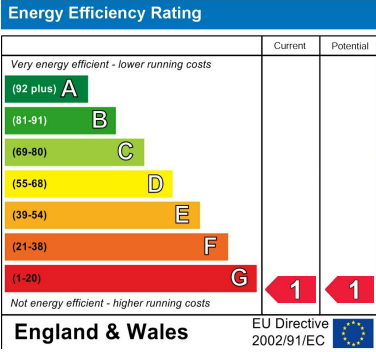
Floor Plan



Area Map



Energy Efficiency Graph



These particulars, whilst believed to be accurate are set out as a general outline only for guidance and do not constitute any part of an offer or contract. Intending purchasers should not rely on them as statements of representation of fact, but must satisfy themselves by inspection or otherwise as to their accuracy. No person in this firms employment has the authority to make or give any representation or warranty in respect of the property.