



Bartholomew Road

London, NW5

Asking Price £750,000

Positioned on the top floor of an attractive period building sits this two bedroom flat located on the sought-after Bartholomew Road. The property is arranged around a central entrance hall, leading to a generous reception room with excellent natural light and a separate kitchen / dining room, thoughtfully laid out to maximise workspace and storage. There are two bedrooms, including a spacious principal bedroom and a second bedroom ideal for guests or a home office. There is also a modern bathroom and ample storage throughout. The property also benefits from access to a communal garden.

CHESTERTONS



Bartholomew Road

London, NW5

- Superb Location
- Two Bedrooms
- Top Floor
- Communal Garden
- Chain Free



Bartholomew Road is very well situated in easy reach to all amenities and facilities of Kentish Town and Camden Town with some of London's best eateries and pubs as well as shops, boutiques and supermarkets. Transport is excellent with Kentish Town (Mainline and Northern Line services) and Camden Road (Overground) as well as numerous bus routes. Open spaces nearby include Cantelowes Gardens, Hampstead Heath and Primrose Hill.

Tenure: Leasehold with 94 years remaining

Service Charge: £886 per annum

Ground Rent: £0

Local Authority: Camden

Council Tax Band: D

Score	Energy rating	Current	Potential
92+	A		
81-91	B		
69-80	C		
55-68	D	67 D	78 C
39-54	E		
21-38	F		
1-20	G		

Chestertons Camden & Kentish Town Sales

99-101 Parkway

Camden

London

NW1 7PP

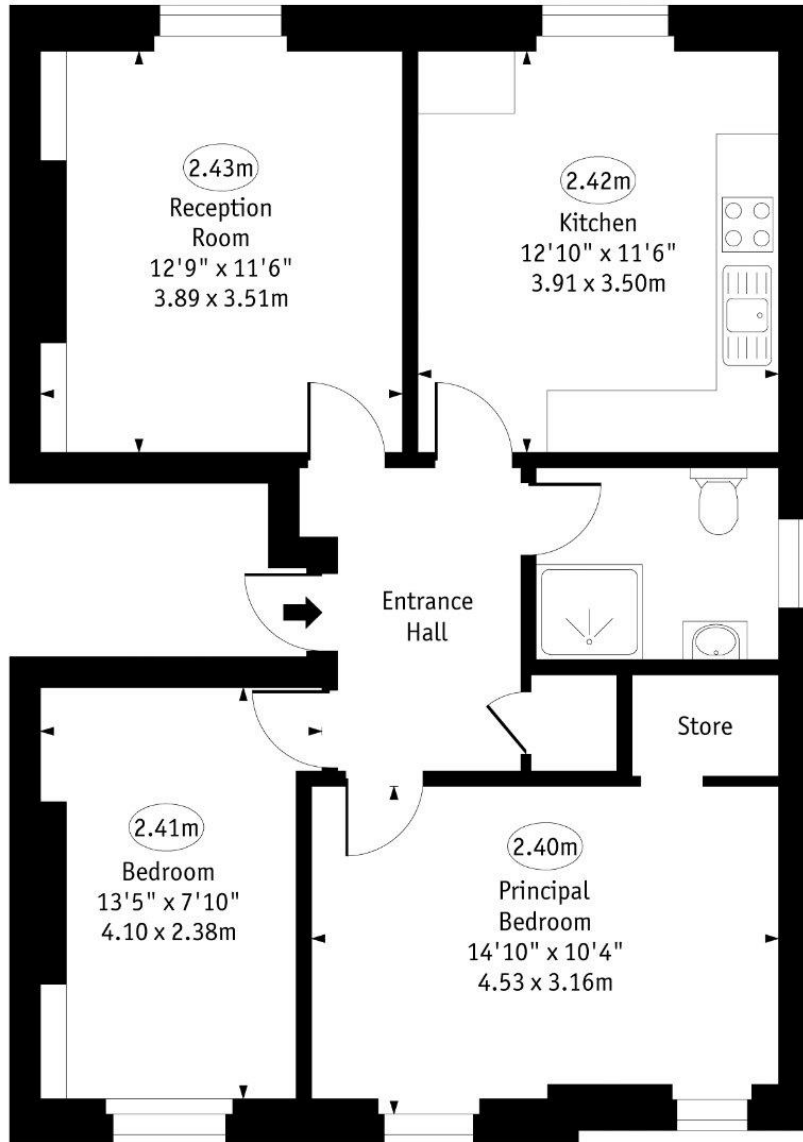
camden@chestertons.co.uk

020 7267 2053

chestertons.co.uk

Bartholomew Road

○ - Ceiling Height



Third Floor
721 Sq Ft - 66.98 Sq M

Approx Gross Internal Area 721 Sq Ft - 66.98 Sq M

Every attempt has been made to ensure the accuracy of the floor plan shown. However, all measurements, fixtures, fittings, and data shown are approximate interpretations and for illustrative purposes only. Measured according to the RICS. Not To Scale.

www.goldlens.co.uk
Ref. No. 030518JH