



jordan fishwick

71-73 WHITLE ROAD NEW MILLS HIGH PEAK SK22 4EG
Per Month £1,350 Per Month

71-73 WHITLE ROAD NEW MILLS HIGH PEAK SK22 4EG

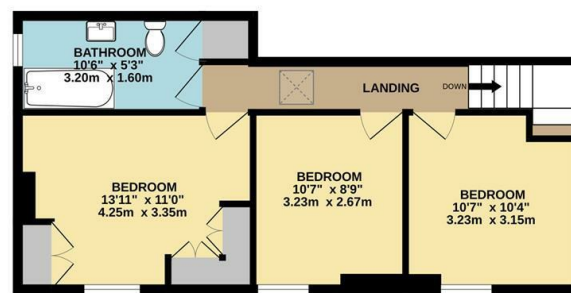
Commanding fine views over New Mills, a delightful and deceptive stone built cottage of character. Offering three good sized bedrooms and balanced living accommodation oozing charm, this end of terrace is sure to impress. Off road parking, enclosed cottage garden with greenhouse and comprising: entrance porch, wc, large living room with wood burning stove, dining room with French doors, fitted kitchen, three first floor bedrooms and bathroom with period suite. Gas central heating and double glazing. Available 1st August 2026 and Un-furnished.



GROUND FLOOR



1ST FLOOR



Whilst every attempt has been made to ensure the accuracy of the floorplan contained here, measurements of doors, windows, rooms and any other items are approximate and no responsibility is taken for any error, omission or mis-statement. This plan is for illustrative purposes only and should be used as such by any prospective purchaser. The services, systems and appliances shown have not been tested and no guarantee as to their operability or efficiency can be given.
Made with Metropix ©2023



- Fabulous Views
- Cusp Of Open Countryside
- Charming Cottage of Character
- Three Good Sized Bedrooms
- Beautifully Presented
- Driveway Parking and Cottage Gardens
- Wood Burning Stove
- Available 1st August 2026
- Un-Furnished

Energy Efficiency Rating		Environmental Impact (CO ₂) Rating			
Very energy efficient - lower running costs	Current	Potential	Very environmentally friendly - lower CO ₂ emissions	Current	Potential
(92 plus) A			(92 plus) A		
(81-91) B			(81-91) B		
(69-80) C			(69-80) C		
(55-68) D			(55-68) D		
(39-54) E			(39-54) E		
(21-38) F			(21-38) F		
(1-20) G			(1-20) G		
Not energy efficient - higher running costs			Not environmentally friendly - higher CO ₂ emissions		
England & Wales	EU Directive 2002/91/EC	85	England & Wales	EU Directive 2002/91/EC	61