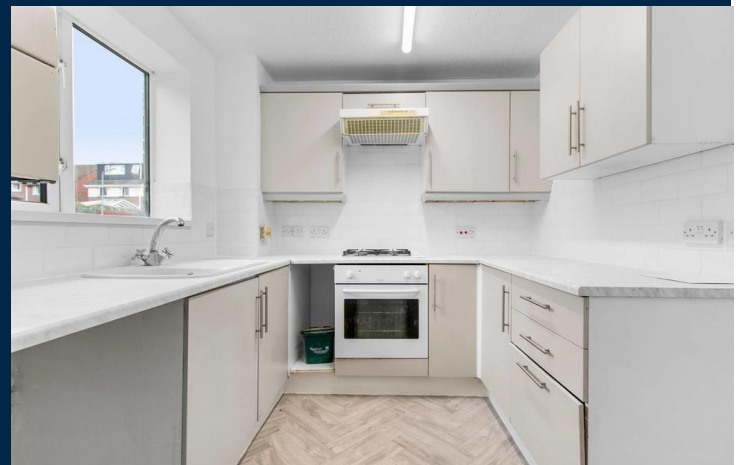




GREENACRES
BARRY CF63 2PN

ASKING PRICE OF
£189,950



MID TERRACED HOUSE



*** NEW *** MGY are delighted to offer to the market this two bedroom mid link property with No Chain. The property has recently been redecorated with new flooring. Situated towards the East End of Barry with great links to Cardiff and the M4. Briefly comprising entrance hallway, kitchen, lounge, conservatory and to the first floor are two bedrooms and a family bathroom. Outside to the front is off road parking and to the rear is an enclosed low maintenance garden. Early viewing is advised.

TENURE: FREEHOLD

COUNCIL TAX BAND: C

FLOOR AREA APPROX :

VIEWING: STRICTLY BY APPOINTMENT

BEDROOM TWO

10' 8" x 6' 11" (3.25m x 2.11m)

Double glazed window to the front. Radiator. Fitted carpet.

BATHROOM

Double glazed opaque window to the front. Panelled bath with shower over, closed cistern w.c and wash hand basin. Vinyl flooring. Radiator.

OUTSIDE

To the front: Off road parking.

To the rear: Enclosed garden laid to paving.

ENTRANCE HALL

Entered via double glazed front door. Vinyl flooring. Radiator. Door to Lounge and archway to Kitchen.

KITCHEN

7' 9" x 7' 9" (2.36m x 2.36m)

Fitted Kitchen to comprise a range of base and wall units with rolled edge laminated work surfaces incorporating stainless steel sink and drainer with mixer taps over. Recess and plumbing for appliance and space for fridge/freezer. Four burner gas hob and electric oven with extractor. Wall mounted gas central heating boiler. Double glazed window to the front. Vinyl flooring.

LOUNGE

17' 9" x 11' 3" (5.41m x 3.43m)

Double glazed french doors providing access to the conservatory. Fitted carpet. Radiator. Carpeted stairs rising to the first floor.

CONSERVATORY

9' 11" x 9' 11" (3.02m x 3.02m)

Double glazed windows and doors to the rear. Laminate flooring.

FIRST FLOOR ACCOMODATION

Carpeted stairs rising to the first floor and airing cupboard. Doors to all rooms. Access to the loft space.

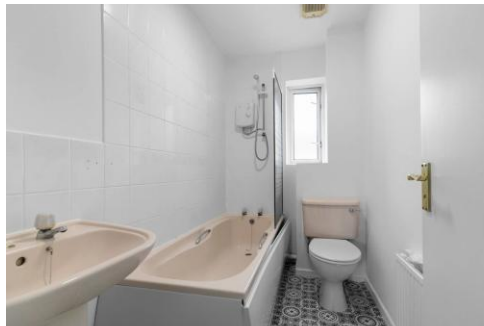
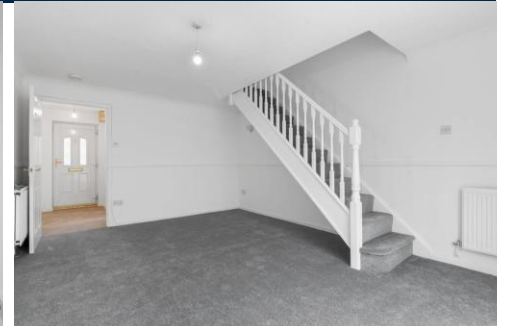
BEDROOM ONE

11' 7" x 9' 10" (3.53m x 3m)

Double glazed window to the rear. Radiator. Fitted carpet.



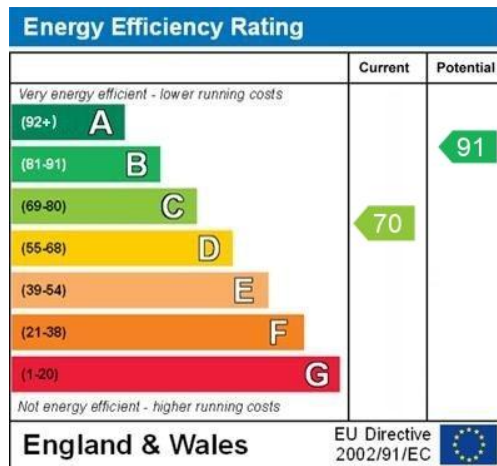
GREENACRES, BARRY CF63 2PN



GREENACRES, BARRY CF63 2PN

GROUND FLOOR
381 sq.ft. (35.4 sq.m.) approx.

1ST FLOOR
285 sq.ft. (26.5 sq.m.) approx.



BARRY 01446 744750

106 Broad Street, Barry, South Glamorgan, CF62 7AJ



Important Notice: These particulars are prepared for guidance only and do not form whole or any part of any offer or contract. Whilst the particulars are given in good faith, they are not to be relied upon as being a statement or representation of fact. They are made without responsibility on the part of MGY Ltd or Vendor/lessor and the prospective purchaser/lessee should satisfy themselves by inspection or otherwise as to their accuracy. Neither MGY Ltd nor anyone in their employ, or the vendor/lessor, imply, make or give any representation/warranty whatsoever in relation to this property.

MGY.CO.UK