



40 Frankholmes Drive Shirley, B90 4YA

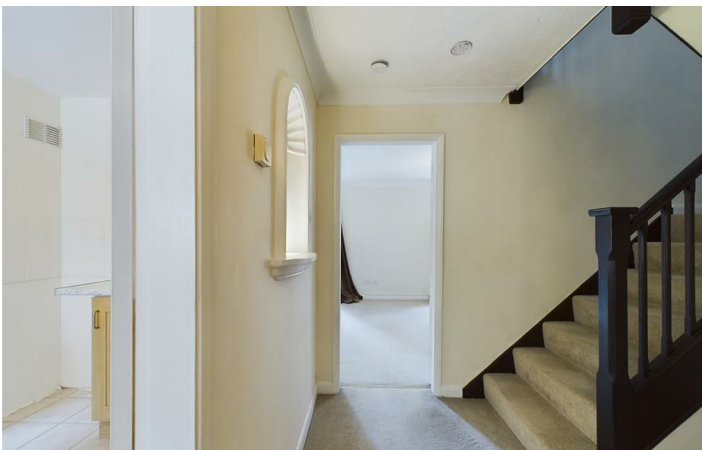
This immaculately presented unfurnished 3 bedroomed semi detached home is part of a well-regarded suburb of Solihull, offering not just a beautiful home but also easy access to the Town Centre.

Solihull Town Centre hosts the renowned Touchwood complex offering residents easy access to upscale retail, dining, and entertainment options including a multi screen cinema theatre and library.

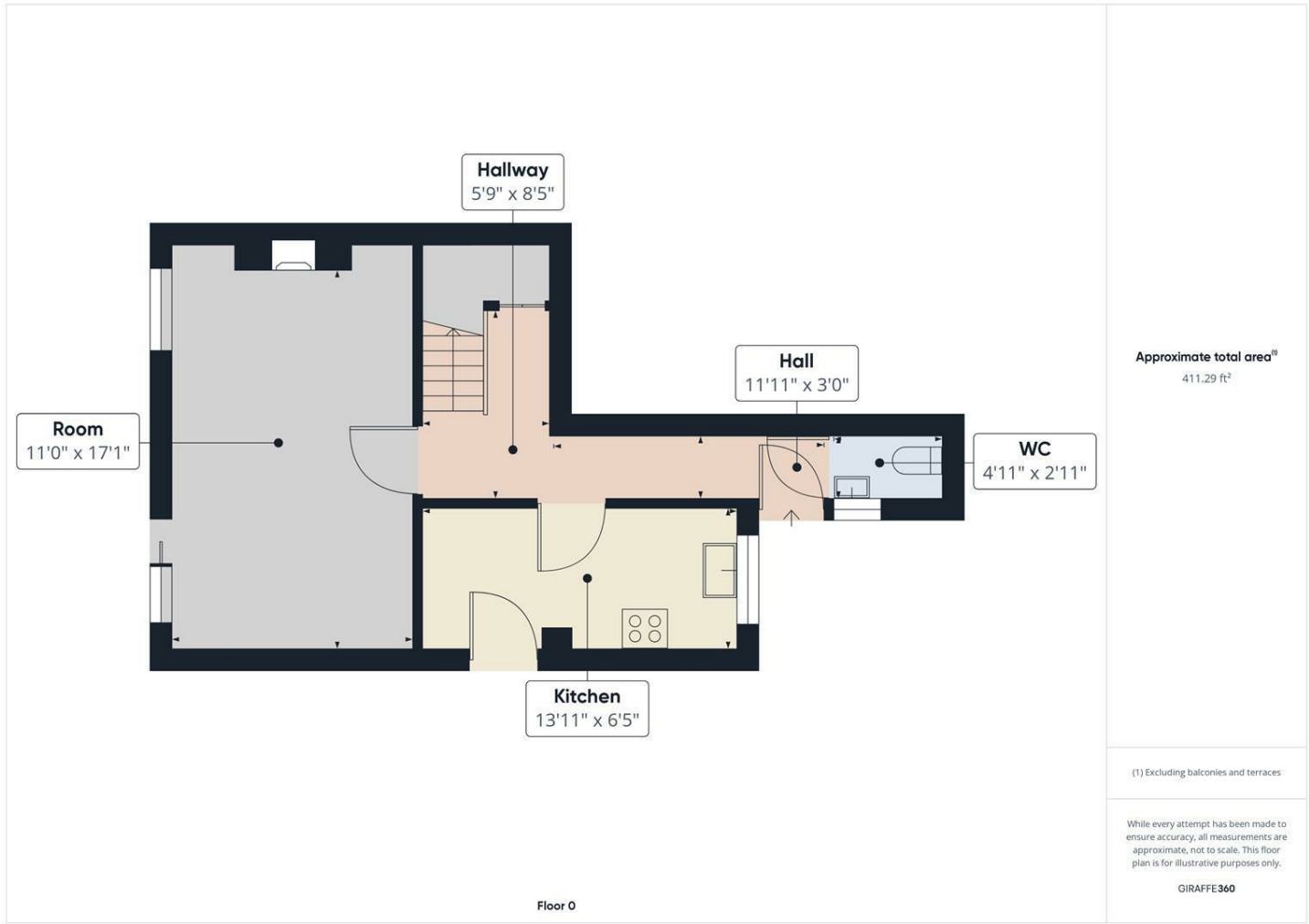
For leisure and outdoor activities, Tudor Grange Leisure Centre and Park are conveniently close by, providing residents with opportunities for recreation, exercise, and enjoying green spaces in the vicinity.

£1,495 PCM





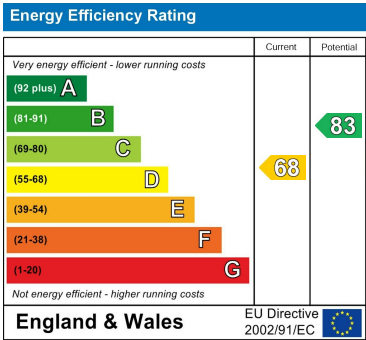
Floor Plan



Area Map



Energy Efficiency Graph



These particulars, whilst believed to be accurate are set out as a general outline only for guidance and do not constitute any part of an offer or contract. Intending purchasers should not rely on them as statements of representation of fact, but must satisfy themselves by inspection or otherwise as to their accuracy. No person in this firms employment has the authority to make or give any representation or warranty in respect of the property.

Zenith House, Highlands Road, Solihull, B90 4PD
Tel: 01217112222 Email: info@solihullresidential.com www.solihullresidential.com