



EARLS COURT SQUARE, SW5

£1,775,000

Exquisite specification
West facing garden
Raised ground floor
Two double bedrooms
Two bathrooms
Energy rating c

@marshandparsons
marshandparsons.co.uk

MARSH &
PARSONS

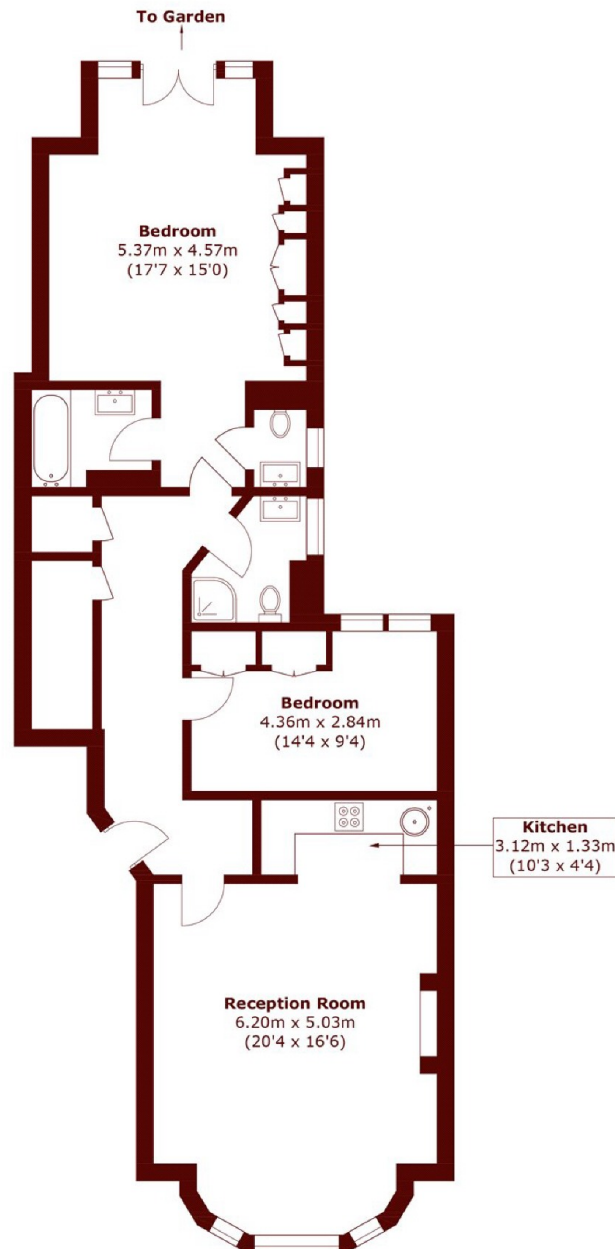


ABOUT THE PROPERTY

Rare to market is this truly exceptional property offering grand proportions combined with a beautifully crafted interior. The property occupies the preferred raised ground floor of this beautiful character conversion, though also benefits from a private south-west facing rear garden. The main reception room overlooks the residents' gardens showcasing a bay window inset with shutters, and boasts vast ceiling heights, wonderful period detailing, and a feature fireplace. Adjacent to this is a semi-open fully equipped kitchen. There are two double bedrooms, two bathrooms, and plenty of storage. Considered best-in-class, this statement property is not to be missed.



STEP INSIDE EARLS COURT SQUARE



Ground Floor

Total area (approx.): 100.9 sq. m (1,086.1 sq. ft)

Earls Court
020 7244 2210

Energy Rating: C We aim to make our particulars both accurate and reliable. However, they are not guaranteed; nor do they form part of an offer or contract. If you require clarification on any points then please contact us, especially if you're traveling some distance to view. Please note that appliances and heating systems have not been tested and therefore no warranties can be given as to their good working order

**MARSH &
PARSONS**