



Hervey Road, SE3

£475,000

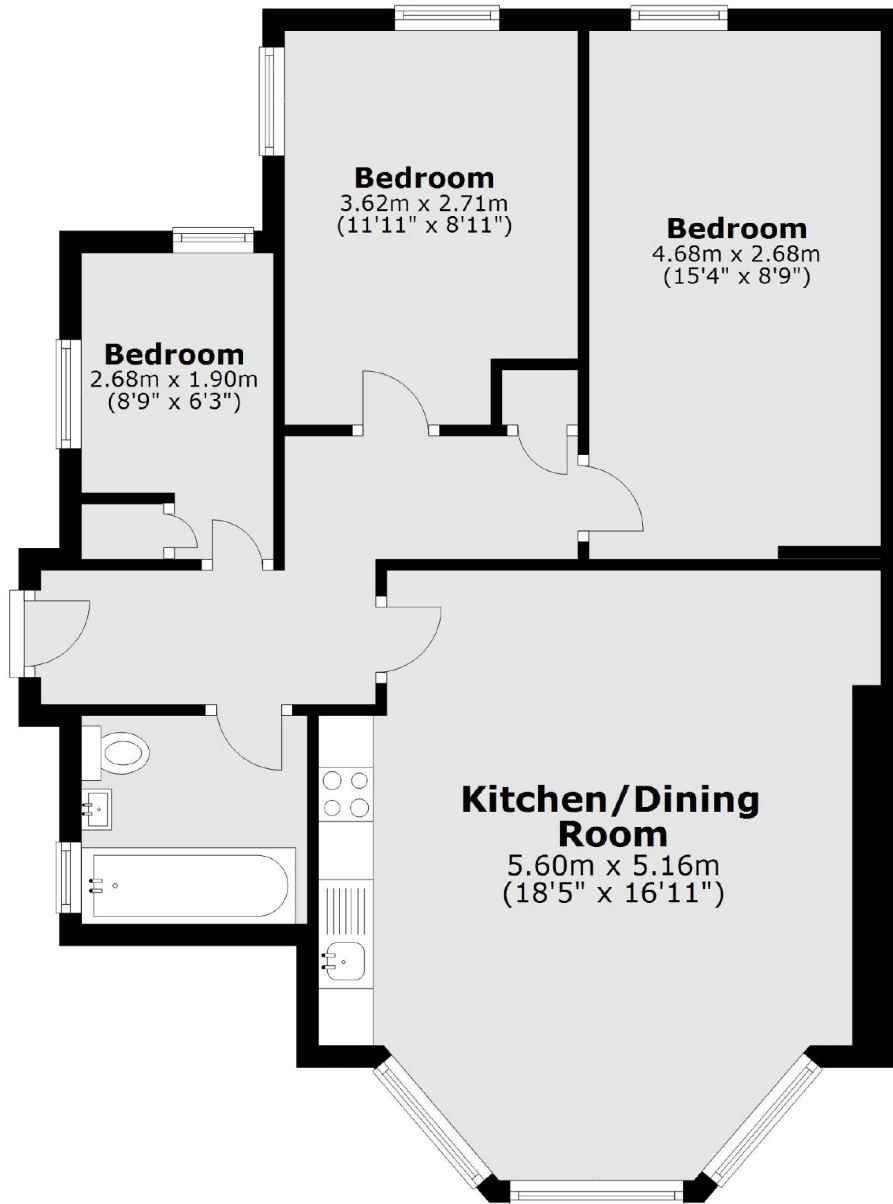
A beautifully presented three bedroom period conversion flat, occupying the lower ground floor of this imposing Victorian building. The property has been recently refurbished throughout, there is a large bay fronted kitchen/reception room to the front, a modern fitted bathroom and three bedrooms. Offered with no onward chain, off street parking, a share of freehold and access to a large communal garden.

Hervey Road is conveniently located for the various independent shops, cafés and Marks & Spencer Food Hall at Blackheath Standard. A stroll across the heath will bring you to Blackheath Village with its array of shops, bars and restaurants and Blackheath Station which provides regular services to London Bridge, Cannon Street and Charing Cross.

Features

- Three Bedroom Conversion
- Immaculate Condition
- Share Of Freehold
- Off Street Parking
- No Onward Chain
- Communal Garden

Hervey Road, London, SE3



Total area: approx. 66.1 sq. metres (711.4 sq. feet)