



HEMMINGS HOMES

OFFERS OVER

**£99,995**

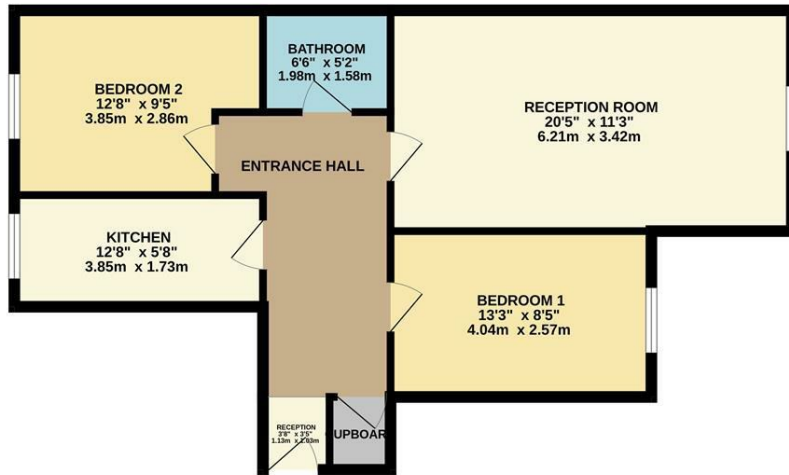
**Tollcross Road**

Glasgow, G31 4XZ

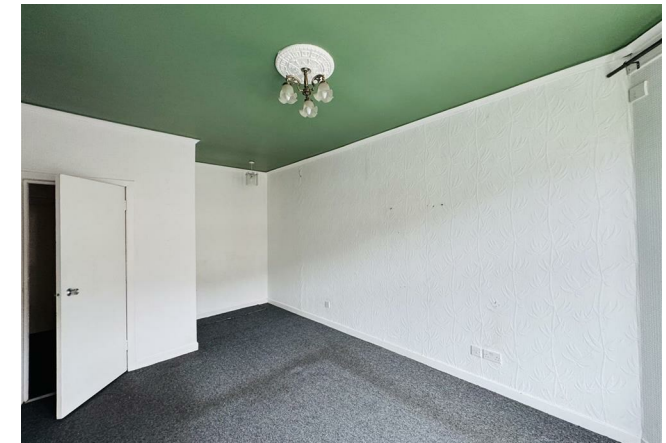
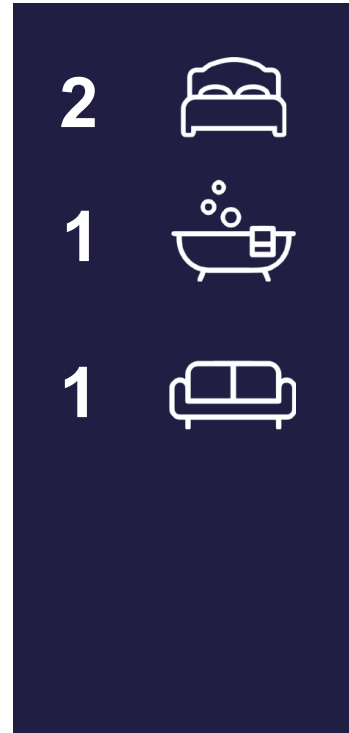
TOLLCROSS RD

373

1ST FLOOR  
682 sq.ft. (63.4 sq.m.) approx.



TOTAL FLOOR AREA - 635sq.ft. (59.0 sq.m.) approx.  
Whilst every attempt has been made to ensure the accuracy of the floorplan contained here, measurements of blocks, windows, rooms and any other items are approximate and no responsibility is taken for any error, omission or mis-statement. This plan is for illustrative purposes only and should be used as such by any prospective purchaser. The services, systems and appliances shown have not been tested and no guarantee as to their operability or efficiency can be given.  
Made with Metrepro 02026



Energy Efficiency Rating		Current	Potential
Very energy efficient - lower running costs			
(92 plus) <b>A</b>			
(81-91) <b>B</b>			
(69-80) <b>C</b>			
(55-68) <b>D</b>			
(39-54) <b>E</b>			
(21-38) <b>F</b>			
(1-20) <b>G</b>			
Not energy efficient - higher running costs			
<b>Scotland</b>		69	76
	EU Directive 2002/91/EC		

Agents Note: Whilst every care has been taken to prepare these particulars, they are for guidance purposes only. All measurements are approximate and are for general guidance purposes only and whilst every care has been taken to ensure their accuracy, they should not be relied upon and potential buyers/tenants are advised to recheck the measurements



**OFFICE ADDRESS**  
376 Brandon Street  
Motherwell  
North Lanarkshire  
ML1 1XA

**OFFICE DETAILS**  
01698 263413  
enquiries@hemmingshomes.co.uk  
hemmingshomes.co.uk