

**LONDON
VICTORIA
GROUPS** 



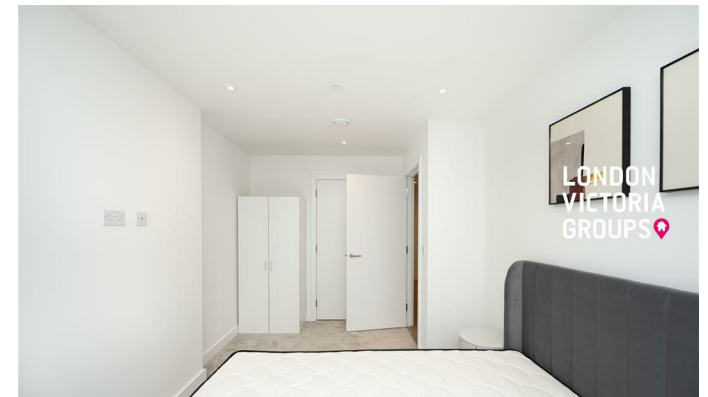
80 Port Street , Manchester M1 2FZ

- 2 bed apartment
- 24-hour concierge service
- Swimming pool
- Landscaped podium gardens
- EPC-B
- Bright open-plan living and dining area
- State-of-the-art gym
- Residents' lounges
- Lift access and beautifully maintained communal areas
- CTB-E

£2,000 Per Month



Local Authority **Manchester**
Council Tax Band **E**
EPC Rating **B**



Manchester Office

Peter House Oxford Street, Manchester,
M1 5AN

Contact

www.londonvictoriagroups.co.uk

Agents Note: Whilst every care has been taken to prepare these particulars, they are for guidance purposes only. All measurements are approximate and for general guidance purposes only and whilst every care has been taken to ensure accuracy, they should not be relied upon and potential buyers/tenants are advised to recheck the measurements.