

St Marys, Bishopswood Road, Prestatyn, Denbighshire LL19 9PL

£695,000

5 3 2



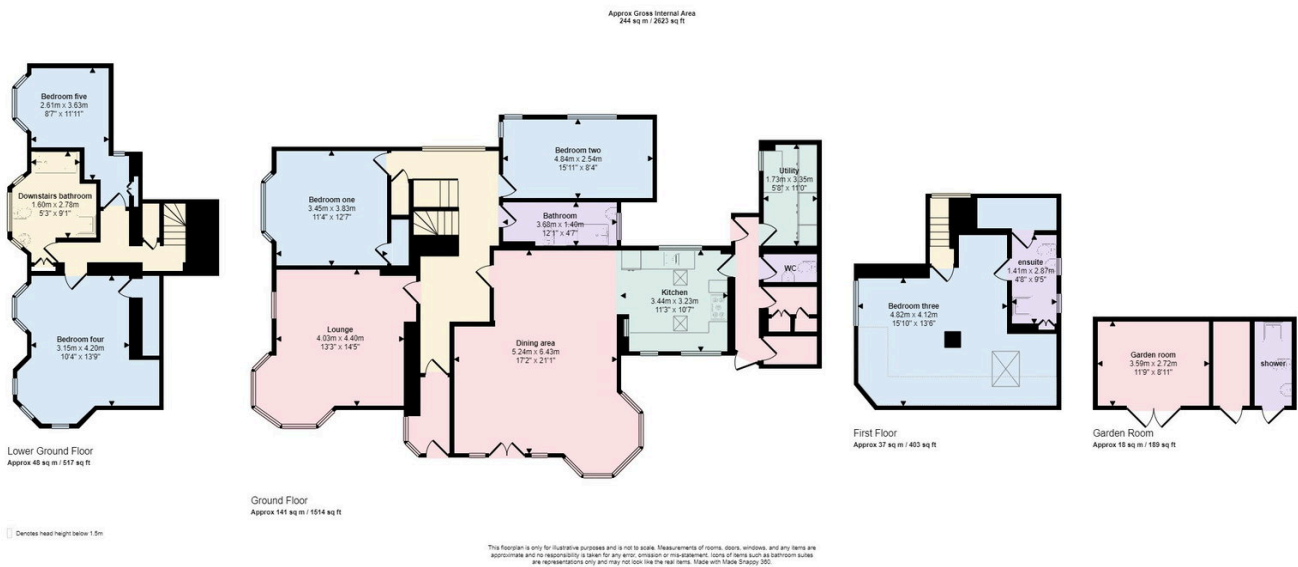
NO FORWARD CHAIN - An opportunity to purchase this unique characterful property in Upper Prestatyn with breathtaking panoramic views towards the Snowdonia Range and the North Wales Coast. This detached home lays nestled within historical natural woodland with mature gardens sympathetic of its alluring surroundings. The property offers a open plan kitchen/ dining/family room, large master dormer bedroom with ensuite, four further double bedrooms, lounge, a range of outbuildings including a sizeable stone built Garden Room with shower room and adjoining storage room. A double and single detached Garage and ample off road parking.

PETER LARGE

ESTATE AGENTS

Key Features

- NO FORWARD CHAIN
- ELEVATED POSITION
- THREE BATHROOMS
- GARDEN ROOM & AMPLE PARKING
- FREEHOLD
- PANORAMIC VIEWS
- FIVE SPACIOUS BEDROOMS
- LARGE GARDENS
- DOUBLE GARAGE & OUTBUILDINGS
- COUNCIL TAX BAND - G EPC - E



CONSUMER PROTECTION REGULATIONS 2008 AND THE BUSINESS PROTECTION FROM MISLEADING MARKETING REGULATIONS 2008

These particulars, whilst believed to be accurate, are set out for guidance only and do not constitute any part of an offer or contract. Prospective purchasers or tenants should not rely on these particulars as statement or representation of fact, but must satisfy themselves by inspection or otherwise as to their accuracy. No person in the employment of PETER LARGE Estate Agents has the authority to make or give any representation or warranty in relation to the property. Room sizes are approximate and all comments are of the opinion of PETER LARGE Estate agents having carried out a walk through inspection. These sales particulars are prepared under the consumer regulations 2008 and are governed by the business from misleading marketing regulations 2008.