



**GINGER COW**  
ESTATE AGENTS

01234 860215

## 16 Harlequin Crescent,

£350,000

3 0

Situated within the highly desirable Willow Grove area of Wixams, this well-presented three-bedroom semi-detached home offers modern, well-balanced accommodation ideal for a variety of buyers.

The ground floor features a welcoming entrance hall, a spacious lounge perfect for relaxing or entertaining, and a stylish kitchen/dining room to the rear providing an excellent space for everyday family life. A convenient cloakroom completes the ground floor.

Upstairs, the property offers a generous principal bedroom with en-suite shower room, a further double bedroom, a comfortable single bedroom and a modern family bathroom. Outside, the enclosed rear garden provides an ideal space for outdoor dining and relaxation, while a driveway to the side offers off-road parking for two vehicles.

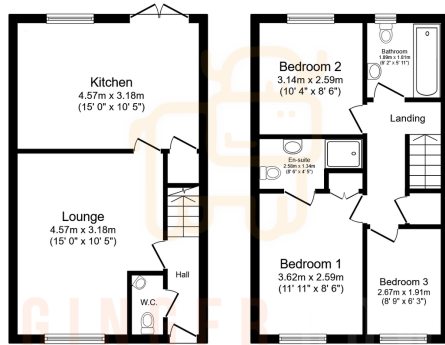


Floor Area: 828 sq. ft.

Tenure: Freehold

Service Charge: £0 per annum

Ground Rent: £0 per annum



Ground Floor  
Floor area 35.9 sq.m. (386 sq.ft.)

First Floor  
Floor area 35.9 sq.m. (386 sq.ft.)

TOTAL: 71.7 sq.m. (772 sq.ft.)

This floor plan is for illustrative purposes only. It is not drawn to scale. Any measurements, floor areas (including any total floor area), openings and orientations are approximate. No details are guaranteed. Please contact the retail agent for any purpose and do not form any part of any agreement. No liability is taken for any error, omission or misstatement. A party must rely upon its own inspection(s). Powered by www.propertybox.io

