



BRUDENELL ROAD, SW17

£1,400,000

- Four Bedrooms
- Two Bathrooms
- Downstairs WC
- Tooting Bec
- Beautifully Presented
- Walk in Wardrobe



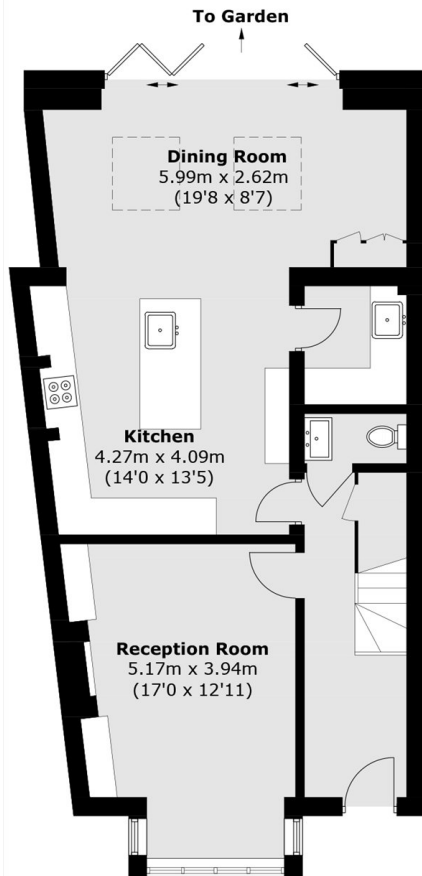


ABOUT THE HOME

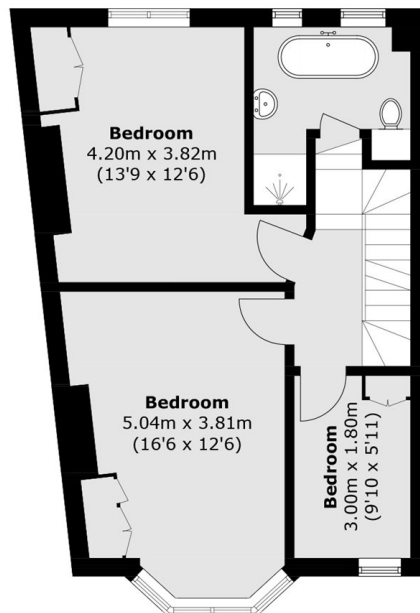
A stunning four-bedroom, two-bathroom end of terrace house, fully extended and thoughtfully renovated throughout to create a stylish and spacious family home. This exceptional home seamlessly blends period character with contemporary finishes, offering flexible and luxurious family living in a prime Tooting Bec location. Situated on Brudenell Road, one of Tooting Bec's most sought-after roads, the property benefits from close proximity to highly regarded local schools, Tooting Bec Tube Station, and the expansive green spaces of Tooting Bec Common. Internally, the home spans over 1,700 sq ft and has been beautifully designed. The ground floor features a charming, contemporary lounge with a stove fireplace, bespoke alcove cabinetry, and double-glazed windows. A convenient ground floor WC and a separate utility room. At the heart of the home lies a high-specification, fully extended kitchen and dining area. This impressive space boasts herringbone flooring, a large island with bar seating.



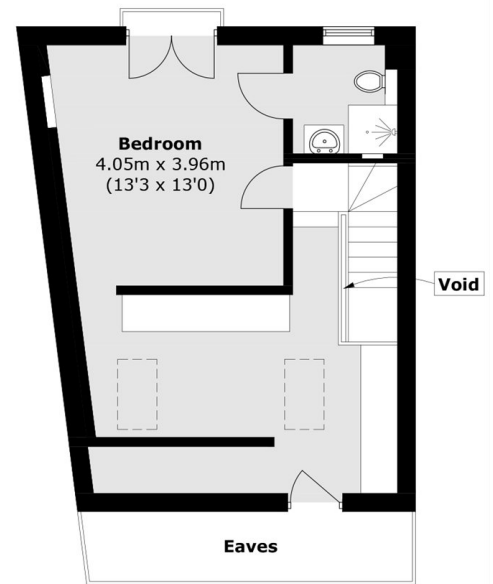




Ground Floor



First Floor



Second Floor

Total area (approx.): 162.1 sq. m (1,744.8 sq. ft)
(Including Void / Excluding Eaves)

JACKSONS TOOTING

3 Upper Tooting Road, London,
SW17 7TS
Sales: 020 8487 3175
Lettings: 020 8487 3176

Energy Rating: We aim to make our particulars both accurate and reliable. However they are not guaranteed; nor do they form part of an offer or contract. If you require clarification on any points then please contact us, especially if you're traveling some distance to view. Please note that appliances and heating systems have not been tested and therefore no warranties can be given as to their good working order.