

St. George Wharf, SW8

£595,000

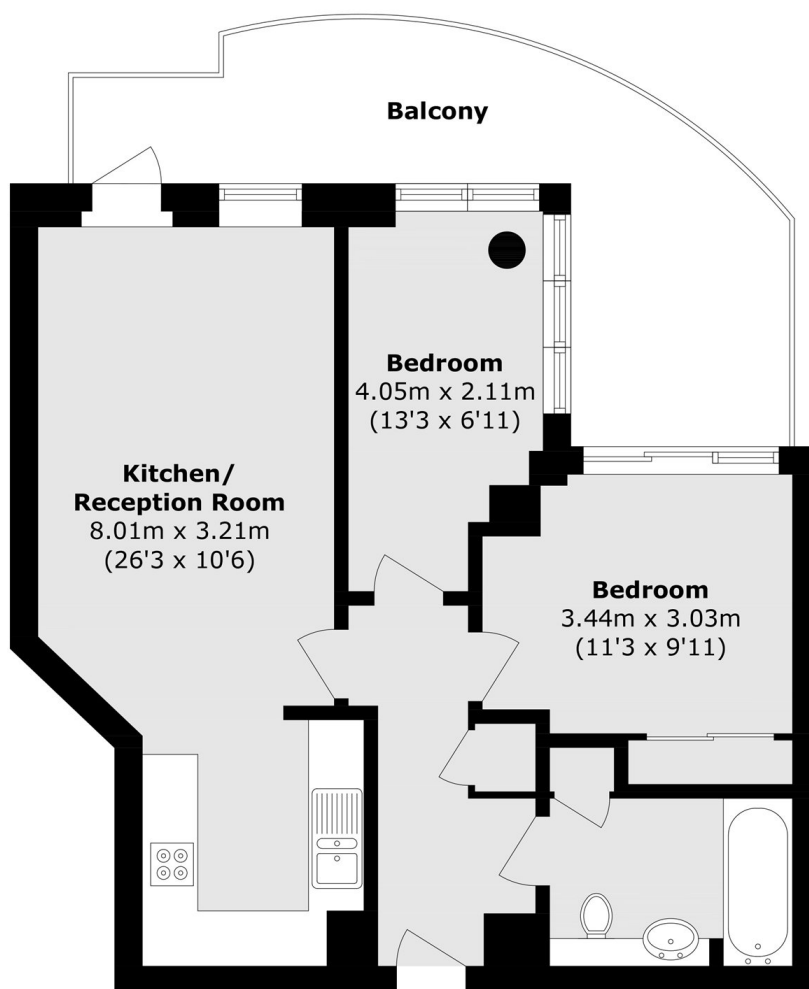
A beautifully presented two bedroom, second floor modern apartment benefitting from direct views of the River Thames. Flooded with light, the property has a sociable open plan living room which combines perfectly with the modern fitted kitchen. Additionally, there is space for dining and direct access onto a large terrace which provides options for outside dining and access from the principal bedroom. There is good storage throughout, access to 24 hour concierge and there is no onward chain.

St. George Wharf is located on the banks of the River Thames, benefitting from unbeatable transport links being just moments from Vauxhall station (Victoria line) tube and National Rail. There is also a River taxi service from St George Wharf Pier with great access to the City and beyond.

Features

- Two Bedrooms
- Views of The River Thames
- Spacious Living Area
- Large Private Balcony
- No Onward Chain
- Concierge

St. George Wharf, London, SW8



Total area (approx.): 55.7 sq. m (599.6 sq. ft)
Balcony area (approx.): 17.0 sq. m (183.0 sq. ft)