



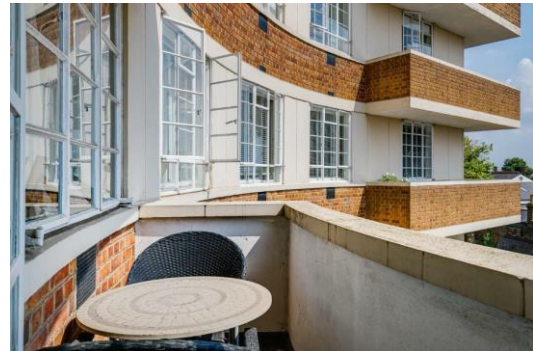
# Cholmeley Lodge

Cholmeley Park, N6

£4,000 per month  
(£923.08 per week)

A delightful 3 bedroom apartment on the 2nd floor of this portered purpose built block. The property boasts a private balcony and lift access as well as large communal roof terrace with amazing views of London. The property is conveniently located close to Highgate Village, Waterlow Park and Highgate & Archway Underground Stations (Northern Lines). Accommodation comprises double reception room with balcony off, fully fitted kitchen, 3 double bedrooms, family bathroom. Heating and hot water is included in the rent.

**CHESTERTONS**



# Cholmeley Lodge

Cholmeley Park, N6

- A Delightful 2nd Floor Apartment in Purpose Built Block
- 3 Bedrooms, 1 Bathroom, Reception, Kitchen
- Balcony, Lift, Communal Roof Terrace, Amazing Views
- Conveniently Located to Highgate Village, Waterlow Park and Highgate and Archway Underground Stations
- Rental Includes Heating and Hot Water



**Minimum Term:** 12 months  
**Deposit Required:** £4,615.38  
**Local Authority:** Haringey London Borough Council  
**Council Tax Band:** F  
**EPC Rating:** C  
**Unfurnished**

Energy Efficiency Rating		Current	Potential
Very energy efficient - lower running costs			
(92-100)	A		
(81-91)	B		83
(69-80)	C	72	
(55-68)	D		
(39-54)	E		
(21-38)	F		
(1-20)	G		
Not energy efficient - higher running costs			
England, Scotland & Wales		EU Directive 2002/91/EC	

### *Chestertons Hampstead Lettings*

55-56 Hampstead High Street  
 Hampstead  
 London  
 NW3 1QH  
[hampsteadlettingsusers@chestertons.co.uk](mailto:hampsteadlettingsusers@chestertons.co.uk)  
 02077941125  
[chestertons.co.uk](http://chestertons.co.uk)

Additional tenant charges apply (fees apply to non-AST tenancies only)  
 Tenancy Agreement Fee: £300  
 References per Tenant/Guarantor: £60  
 Inventory check (approx. £100 – £250 inc. VAT)  
[chestertons.co.uk/property-to-rent/applicable-fees](http://chestertons.co.uk/property-to-rent/applicable-fees)

# Cholmeley Lodge, N6

Approximate gross internal area

111 sq m /1193 sq ft

Key:  
CH - Ceiling Height



Second Floor

