
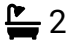

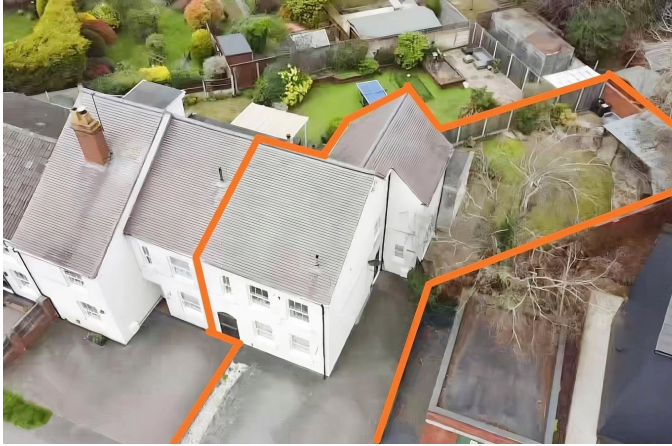


## 2a Greyhound Lane, Norton, Stourbridge

Guide Price £375,000

 3  2  2



- Quote PC0649. Agent - Phil Cook
- Well Presented Modern Family Home with Three Generous Sized Bedrooms.
- Located in the Desirable Stourbridge Location of Norton
- Near to Local Amenities, Mary Stevens Park and Nearby Countryside Walks
- Superb Transport Links by Road and Rail to Worcester, Birmingham and to the Motorway Network.
- Lounge, Excellent Breakfast Kitchen, Open to a Dining Room
- Garden with Covered Barbecue Area
- Modern Spacious Feel
- Early Viewing Recommended to Avoid Disappointment
- Click the 'Request Details' or 'Email Agent' button to book a viewing now!



Total floor area: 92.2 sq.m. (993 sq.ft.)

This floor plan is for illustrative purposes only. It is not drawn to scale. Any measurements, floor areas (including any total floor area), openings and orientations are approximate. No details are guaranteed, they cannot be relied upon for any purpose and do not form any part of any agreement. No liability is taken for any error, omission or misstatement. A party must rely upon its own inspection(s). Powered by www.Propertybox.io

Quote Reference PC0649. Click the 'Request Details' or 'Email Agent' button to book a viewing now! Well presented modern family home with three generous sized bedrooms, master with Ensuite. Must be viewed to be appreciated. Constructed in 2016 and located in the desirable Stourbridge location of Norton giving easy access to local amenities, Mary Stevens Park and nearby countryside walks. Superb transport links by road and rail to Worcester, Birmingham and to the motorway network. The property comprises of lounge, excellent breakfast kitchen, open to a dining room with the added bonus of a utility room and downstairs W.C. to the ground floor.

To the first floor are three generous bedrooms, en-suite to the principal bedroom, family bathroom, private garden with patio and barbecue areas and a good sized driveway to the front. Double glazed and central heating throughout. Hit the 'Request Details' or 'Email Agent' button to secure your viewing now!