



ARCH LIVING

[www.archliving.co.uk](http://www.archliving.co.uk)



x1



x1

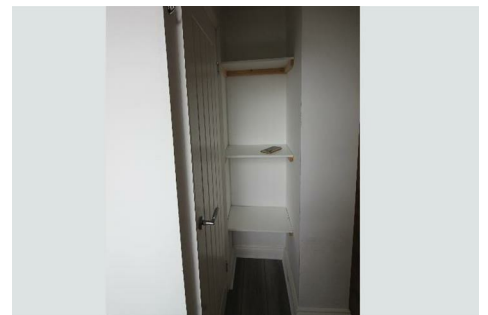


DEPOSIT

**37c Lytham Road, Leicester, Leicestershire LE2 1YD**

**£168 Per week**

\*2025-2026 STUDENT ACCOMMODATION\* ZERO DEPOSIT!! JULY/AUGUST HALF RENT!! \*VIRTUAL TOUR AVAILABLE\*  
BRAND NEW STUDIO APARTMENT in the very popular CLARENDON PARK area. Comprising of an OPEN PLAN DESIGN which gives a MODERN living feel. This studio comes complete with a NEW MODERN KITCHEN and bathroom with no expense spared.



127 Clarendon Park Road, Leicester, Leicestershire LE2 3AJ  
T: 0116 270 6699  
[lettings@archliving.co.uk](mailto:lettings@archliving.co.uk)

**ARCH**



ARCH LIVING

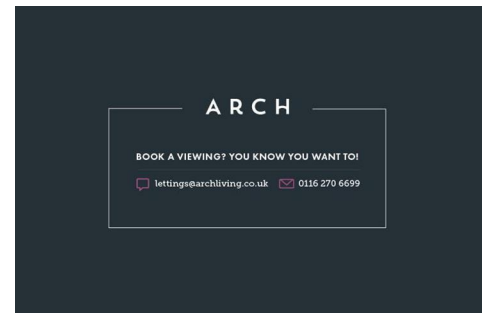
www.archliving.co.uk

#### Energy Efficiency Rating

	Current	Potential
Very energy efficient - lower running costs		
(92 plus) <b>A</b>		
(81-91) <b>B</b>		
(69-80) <b>C</b>		
(55-68) <b>D</b>		
(39-54) <b>E</b>		
(21-38) <b>F</b>		
(1-20) <b>G</b>		
Not energy efficient - higher running costs		
England & Wales		
EU Directive 2002/91/EC		

#### Environmental Impact (CO<sub>2</sub>) Rating

	Current	Potential
Very environmentally friendly - lower CO <sub>2</sub> emissions		
(92 plus) <b>A</b>		
(81-91) <b>B</b>		
(69-80) <b>C</b>		
(55-68) <b>D</b>		
(39-54) <b>E</b>		
(21-38) <b>F</b>		
(1-20) <b>G</b>		
Not environmentally friendly - higher CO <sub>2</sub> emissions		
England & Wales		
EU Directive 2002/91/EC		



127 Clarendon Park Road, Leicester, Leicestershire LE2 3AJ  
T: 0116 270 6699  
lettings@archliving.co.uk

ARCH