



## Cumberland Place, SE6

£220,000

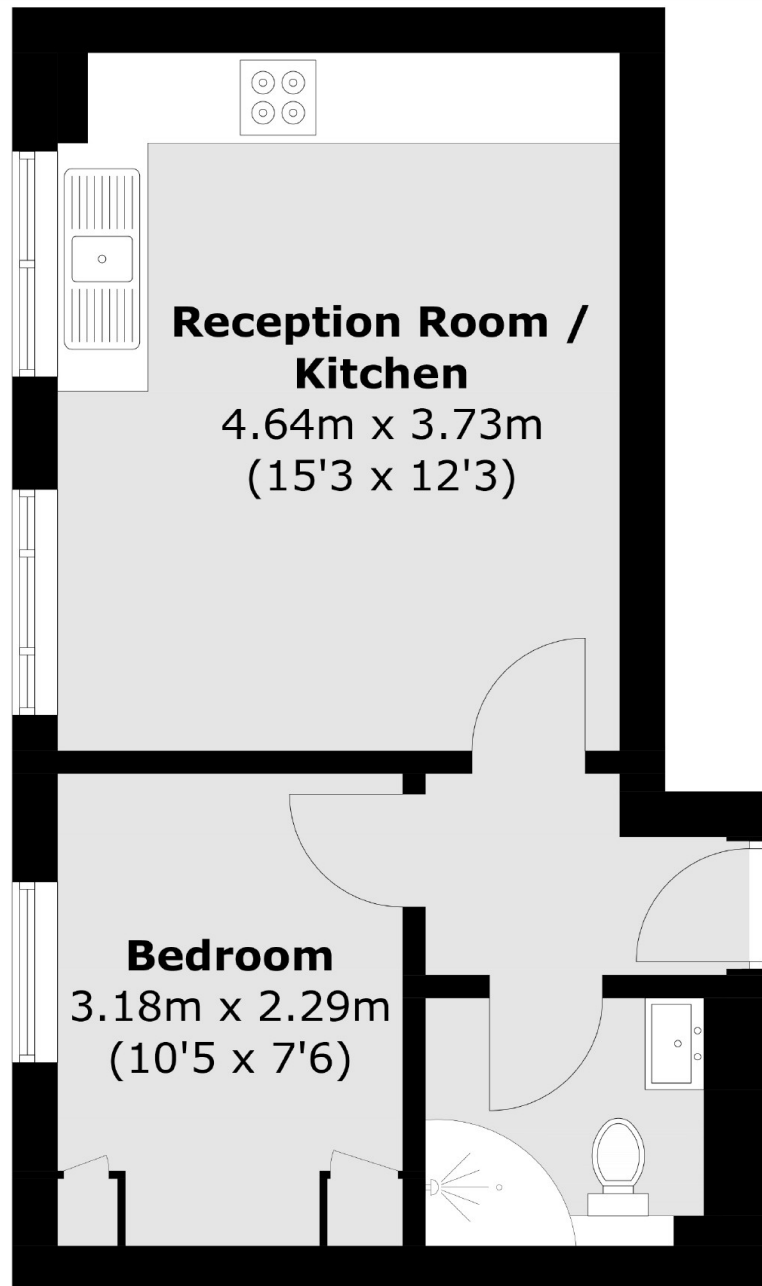
This beautifully presented top-floor one-bedroom flat is ideally located less than a mile from Lee and Hither Green Stations, providing quick access to London Bridge in under 20 minutes! The flat is situated on the top floor of a well-maintained, purpose-built block. It features a communal entrance, a welcoming hallway, and a spacious open-plan kitchen and living room. The kitchen includes modern units and ample storage, while the living area boasts engineered wood laminate flooring with a sleek varnish finish. The master bedroom is cleverly designed to maximise space, featuring a fold-away double bed and built-in wardrobe storage. Additionally, there's a well appointed bathroom and off-street parking for added convenience.

Hither Green and Lee are well-connected areas with quick train links to central London. They offer plenty of green spaces like Manor House Gardens and Mountsfield Park. The area has a community feel with local shops and cafes, while Lewisham provides more amenities nearby. It's a peaceful, convenient spot close to both nature and the city.

### Features

- No Upward Chain
- One Bedroom Flat
- Well Presented Throughout
- Modern Kitchen
- Great Transport Links
- Off Road Parking

Cumberland Place,  
London, SE6



Total area (approx.): 31.6 sq. m (340.1 sq. ft)

**Dexters**

Lee  
430-432 Lee High Road  
Lee  
London  
Sales  
020 8815 2210

Energy Rating: C. We aim to make our particulars both accurate and reliable. However they are not guaranteed; nor do they form part of an offer or contract. If you require clarification on any points then please contact us, especially if you're traveling some distance to view. Please note that appliances and heating systems have not been tested and therefore no warranties can be given as to their good working order.

 **RICS** | Regulated  
Estate Agent  
and Letting Agent

[dexters.co.uk](http://dexters.co.uk)