



Lovelace Road

Surbiton, KT6 6NG

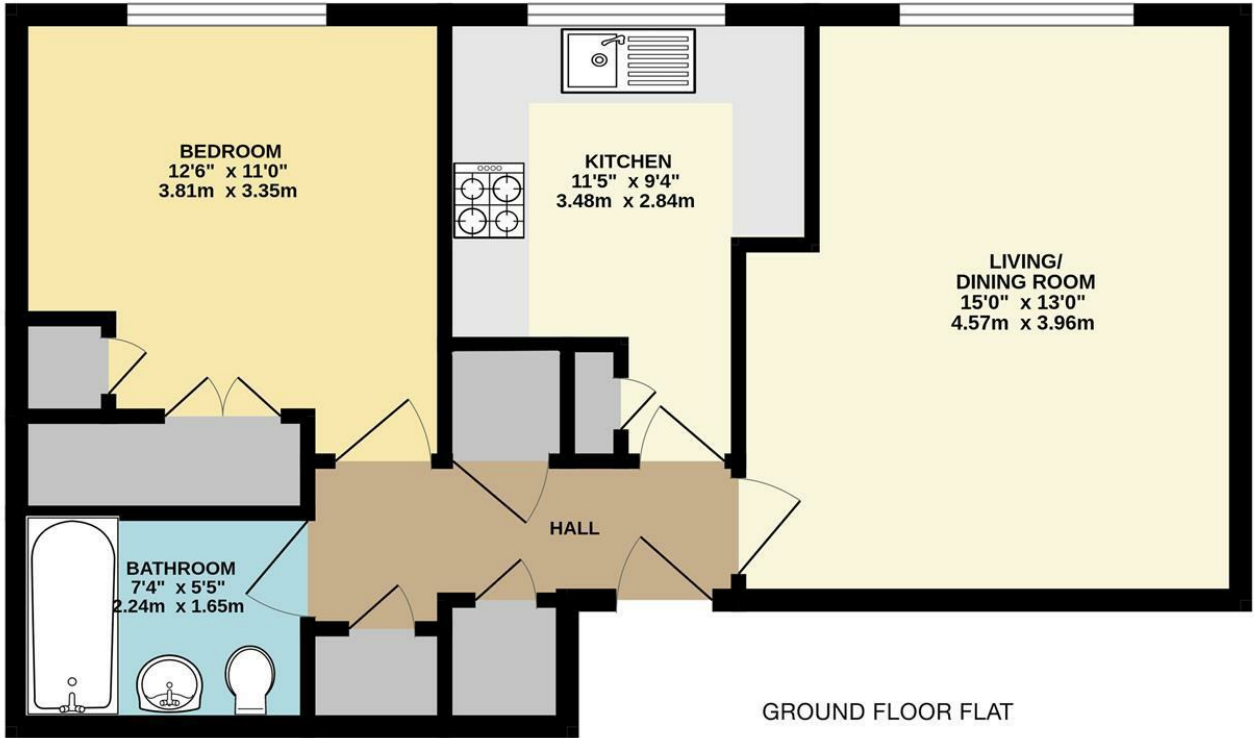
Guide Price £350,000

A charming and unique one bedroom ground floor flat in a respected development close to the centre of Surbiton. Tucked away to the rear of the development the property has pretty views of the well-kept gardens behind and offers a double bedroom with plenty of built in storage, large separate kitchen, a brand new fitted bathroom and well proportioned reception room. There is ample storage off the main hallway and is offered to market chain free and with a share of the freehold. Surbiton and its mainline station with a fast service to Waterloo are only a short walk away.

Material Information: Material Info: Electricity/Water/Sewerage/Gas: Mains. Broadband: FTTC. Mobile Coverage Indoor: Variable Outdoor: Good. Council Tax Kingston Band C.

- Ground Floor
- One Double Bedroom
- New Bathroom
- Ample Storage
- Share of Freehold
- Pretty Tree-Lined Location
- Separate Kitchen
- Large Reception Room
- Beautiful Communal Gardens
- No Onward Chain

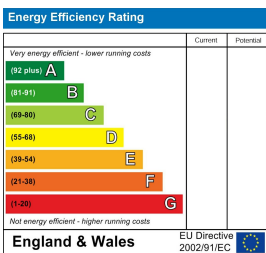
Floor Plan



LOVELACE ROAD, SURBITON
 INTERNAL FLOOR AREA (APPROX.) 528 sq ft/ 49.0 sq m

Whilst every attempt has been made to ensure the accuracy of this floor plan, measurement of doors, windows, rooms and any other items are approximate and no responsibility is taken for any error, omission or mis-statement. Made with Metropix © 2026.

Energy Efficiency Graph



These particulars, whilst believed to be accurate are set out as a general outline only for guidance and do not constitute any part of an offer or contract. Intending purchasers should not rely on them as statements of representation of fact, but must satisfy themselves by inspection or otherwise as to their accuracy. No person in this firm's employment has the authority to make or give any representation or warranty in respect of the property.