



Townsend Lane Harpenden, AL5 2FE

An immaculately presented one bedroom flat on the upper floor (walk up), of this much sought after Jarvis built development (completed in 2016), in a prime central location. Beautiful communal gardens and an allocated parking space. Lease 119 years remaining. Moments from the High Street and Station.

Guide price £375,000

Townsend Lane

Harpenden, AL5 2FE



- Extremely well presented
- Prestigious Jarvis built development
- Allocated parking space
- Council Tax Band C
- Open plan living space
- Prime central location
- Service Charge £2,545.92 pa Ground Rent £150 pa
- Well proportioned double Bedroom
- Beautiful communal gardens
- Lease 119 years remaining

Entrance Hall

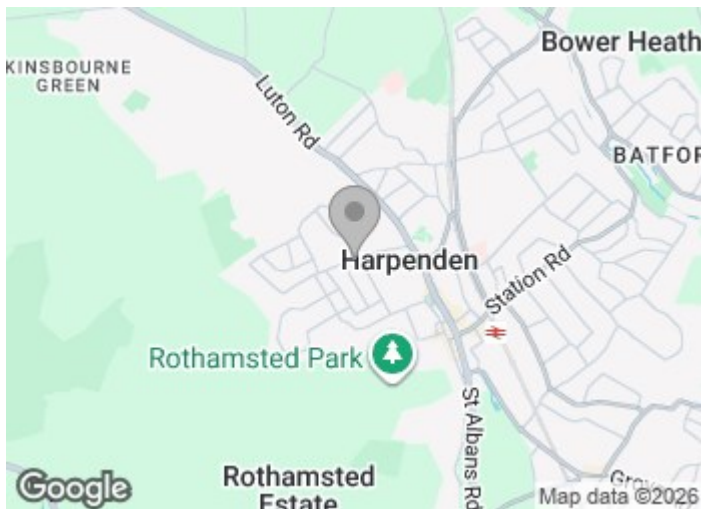
Kitchen / Living / Dining Room

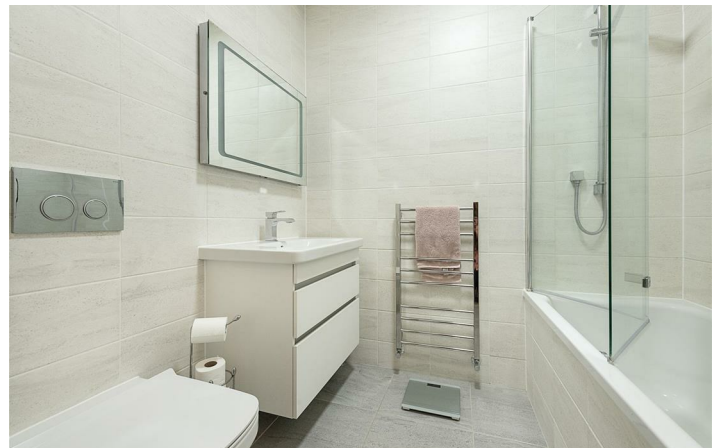
21'5" (max) x 16'2" (max) (6.55 (max) x 4.94 (max))

Bedroom

15'10" (max) x 10'1" (4.84 (max) x 3.09)

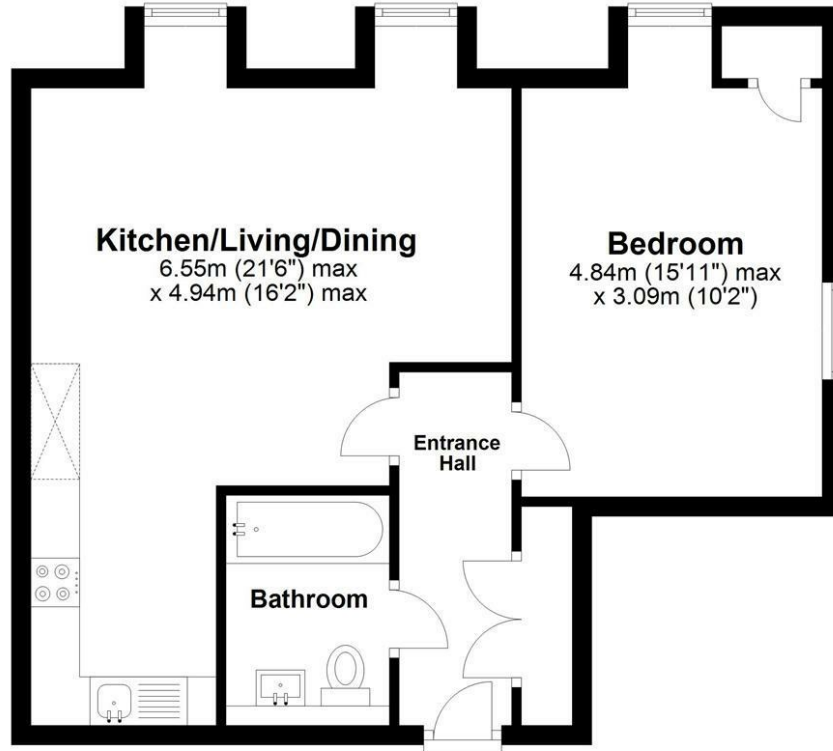
Bathroom





Top Floor

Approx. 49.6 sq. metres (533.9 sq. feet)



Total area: approx. 49.6 sq. metres (533.9 sq. feet)

Sketch layout only. Not to scale. Plan produced for Whittaker & Co.

Plan produced using PlanUp.

These particulars, whilst believed to be accurate are set out as a general outline only for guidance and do not constitute any part of an offer or contract. Intending purchasers should not rely on them as statements of representation of fact, but must satisfy themselves by inspection or otherwise as to their accuracy. No person in this firm's employment has the authority to make or give any representation or warranty in respect of the property.

