

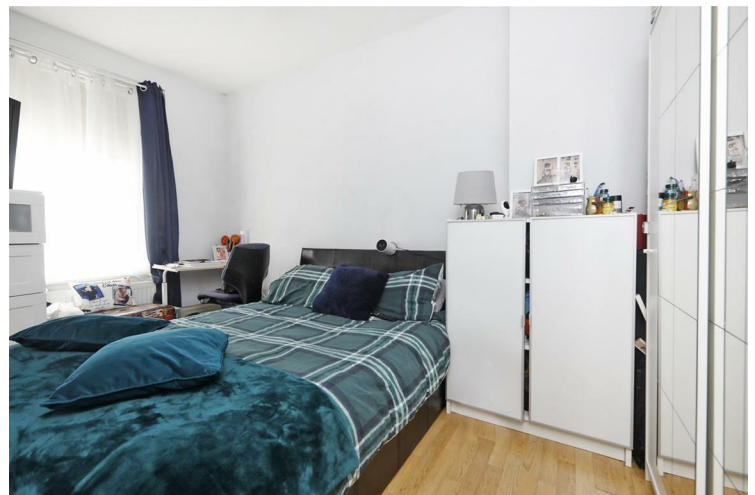


Bath Terrace SE1

£395,000
LEASEHOLD

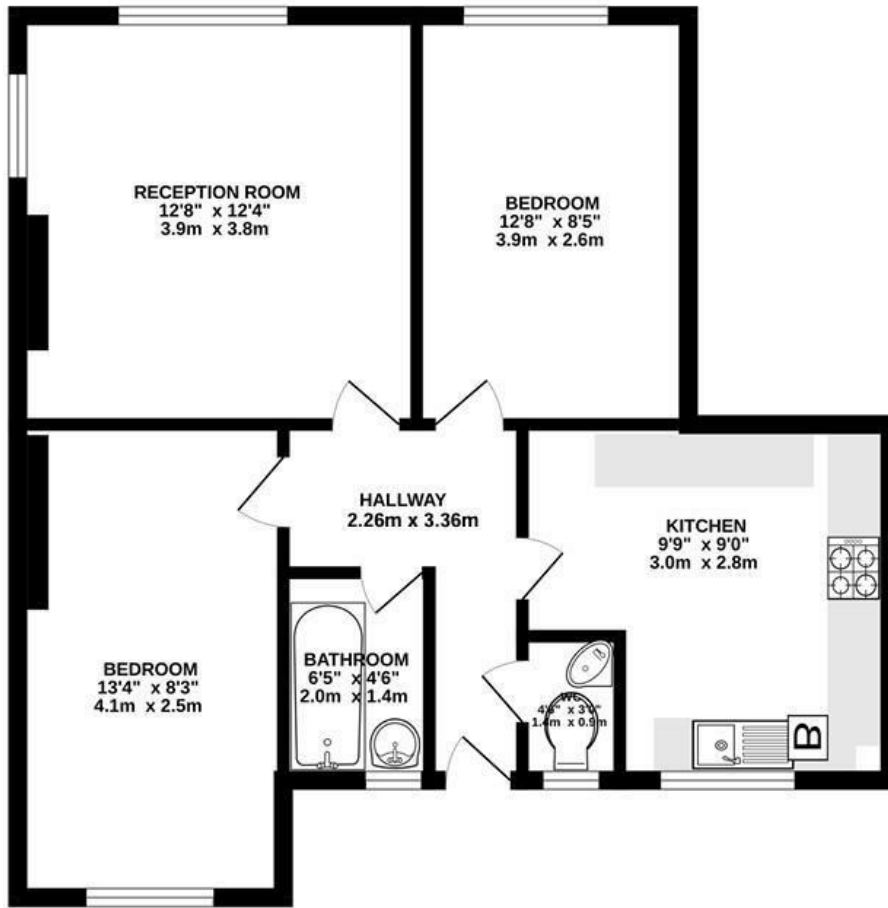
Modern, newly refurbished two bedroom apartment on Bath Terrace, Elephant and Castle SE1. The property comprises two large double bedrooms, a spacious living room, a modern kitchen and a modern bathroom. Perfect for homeowners and investors alike.

Call the sales department to reserve a viewing on 0207 015 1360.



GROUND FLOOR
585 sq.ft. (54.4 sq.m.) approx.

1 Binnie House, London, SE1 6QG



Energy Efficiency Rating		Current	Potential
Very energy efficient - lower running costs			
(92 plus) A			
(81-91) B			
(69-80) C			78
(55-68) D	64		
(39-54) E			
(21-38) F			
(1-20) G			
Not energy efficient - higher running costs			
England & Wales		EU Directive 2002/91/EC	

Agents Note: Whilst every care has been taken to prepare these particulars, they are for guidance purposes only. All measurements are approximate and are for general guidance purposes only and whilst every care has been taken to ensure their accuracy, they should not be relied upon and potential buyers/tenants are advised to recheck the measurements

Borough Lettings
230 Borough High Street
London
SE1 1JX

020 7015 1360
enquiries@leonardleese.com
www.leonardleese.com

