

Avonmore Road, W14

£450,000

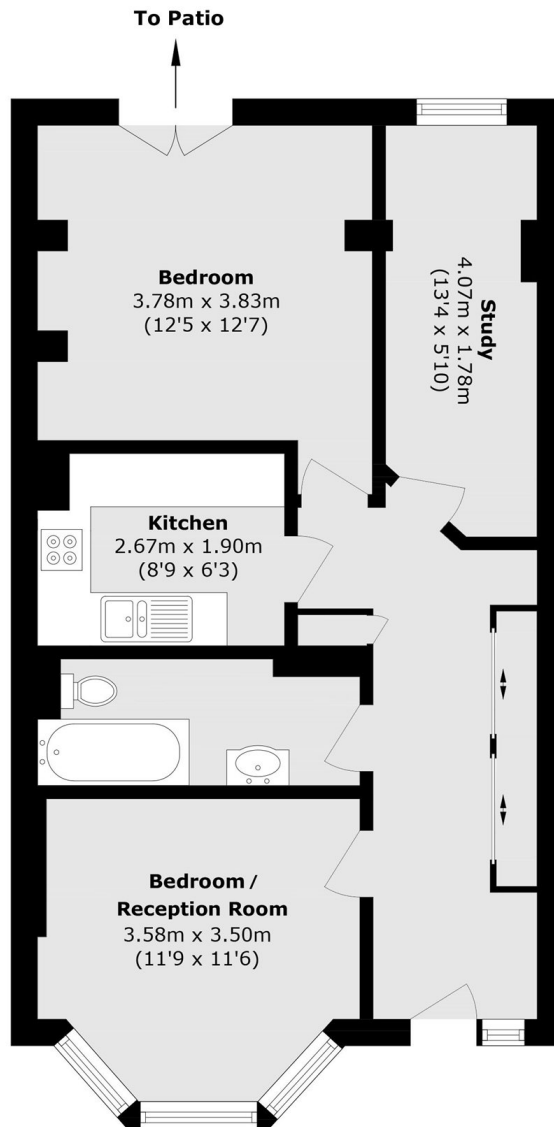
A large two bedroom apartment with French doors opening onto a private garden featuring a patio area and steps leading to a raised upper garden. The bright spacious property offers a bay fronted reception room, entrance hall with a large storage unit, modern separate kitchen, high ceilings and wooden floors. The property benefits from a long lease and comes to the market chain free.

Avonmore Road is conveniently located near a selection of shops, transport links and amenities including cafes, restaurants and gyms on Kensington High Street, Holland Park, Kensington Gardens, Hyde Park, and West Kensington and Barons Court tube stations. At the end of Avonmore Road is Kensington Olympia station and the landmark £1.3bn Olympia redevelopment that is set to deliver new cinemas, restaurants and cultural venues.

Features

- No Onward Chain
- Two Bedrooms
- Garden
- Spacious
- Close To Tubes
- Long Leasehold

Avonmore Road, London, W14



Lower Ground Floor

Total area (approx.): 58.9 sq. m (633.9 sq. ft)