



# The Pembroke 4 bedroom home

Home 174

**Cavendish View**

Thurston IP31 3QH | 01359 758632

[lindenhomes.co.uk](http://lindenhomes.co.uk)

**Linden**  
HOMES

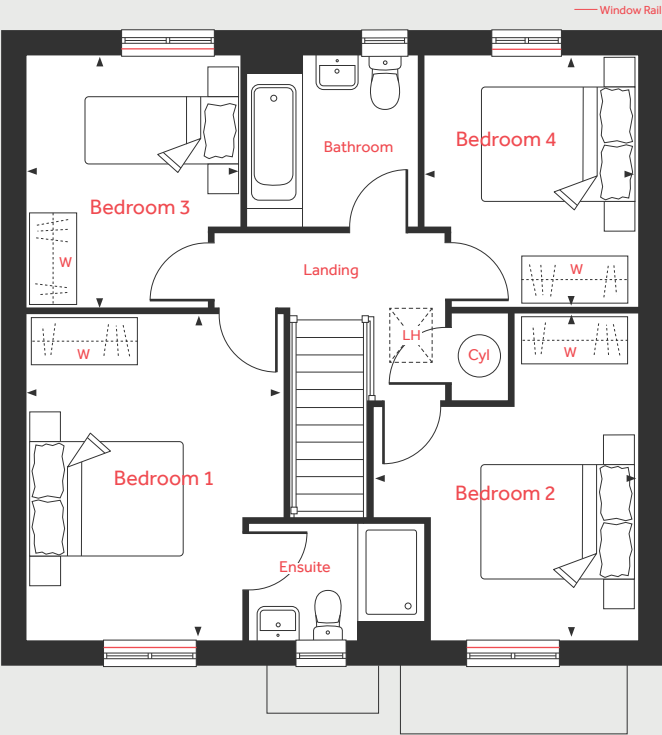
# The Pembroke

## 4 bedroom home

Home 174\*

\*Handed/Mirror image

### First Floor



### Ground Floor

#### Living Room

4.83m x 3.49m 15'10" x 11'5"

#### Kitchen/Dining/Family Area

8.06m x 3.34m 26'6" x 11'0"

#### Study

2.40m x 2.36m 7'11" x 7'9"

### First Floor

#### Bedroom 1

4.28m x 3.39m 14'1" x 11'1"

#### Bedroom 2

4.31m x 2.74m 14'2" x 9'0"

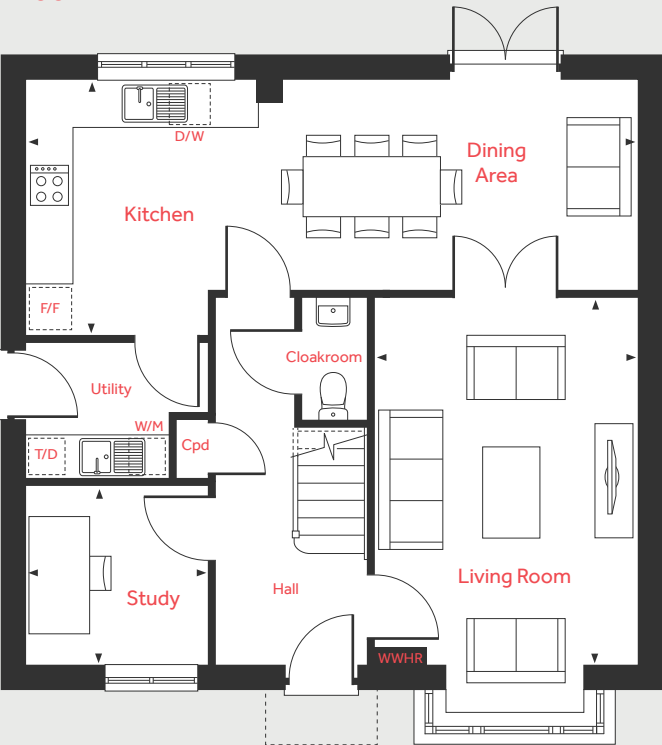
#### Bedroom 3

3.36m x 2.87m 11'0" x 9'5"

#### Bedroom 4

3.33m x 2.81m 10'11" x 9'3"

### Ground Floor



W/M	Space for washing machine	LH	Loft hatch
F/F	Space for fridge freezer	Cpd	Cupboard
D/W	Space for dishwasher	W	Space for wardrobe
T/D	Space for tumble dryer	◀ ▶	Measuring points
WWHR	Waste water heat recovery	Cyl	Hot water cylinder

The illustrations shown are computer generated impressions of how the property may look and are indicative only. External details or finishes may vary on individual plots and homes may be built in either detached or attached styles depending on the development layout. Exact specifications, window styles and whether a property is left or right-handed may differ from plot to plot. Please speak to our sales consultant for specific plot details. The floorplan has been produced for illustrative purposes only. Room sizes shown are between arrow points as indicated on plan. The dimensions have tolerances of + or -50mm and should not be used other than for general guidance. If specific dimensions are required, enquiries should be made to the sales consultant. The floor plans shown are not to scale. Measurements are based on the original drawings. Slight variations may occur during construction. December 2024.

# Linden

## HOMES