

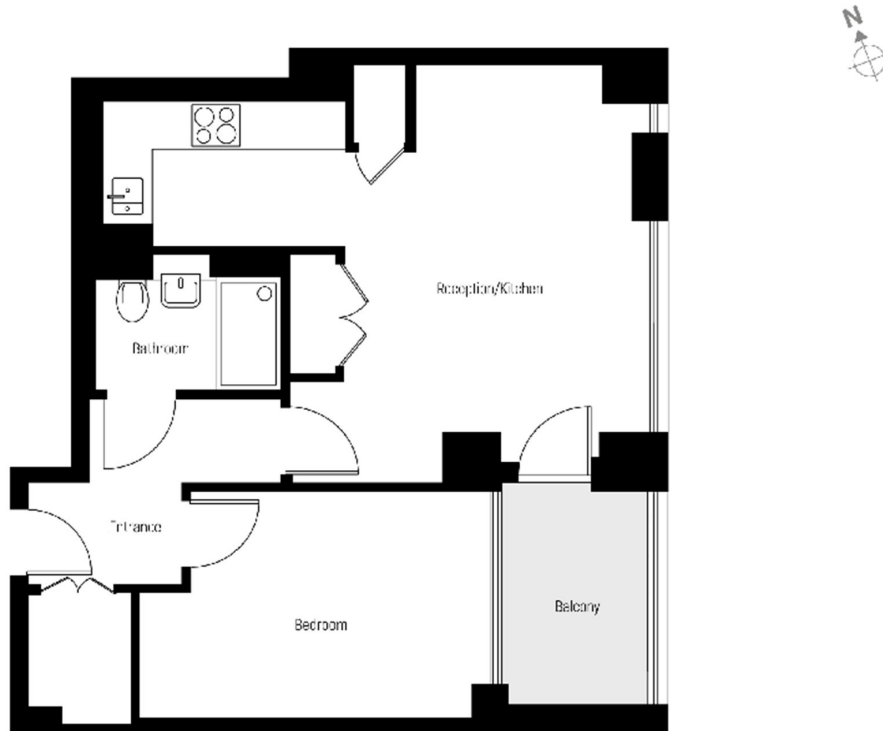
SILVOCEA WAY, E14

£470,000

One bedroom, one bathroom apartment with private balcony within the Orchard Wharf development. With a bright open-plan living and dining area, elegant walnut flooring throughout and a sleek, fully integrated kitchen fitted with Smeg appliances, plus modern bathroom with marble-effect tiles, dedicated concierge and residents' lounge.

- Double Bedrooms
- Modern
- Chain Free
- Lease Length 170 Years
- Ground Rent £400
- Service Charge £2,500

1 bedroom apartment



Approximate gross internal area: 546 sq ft / 50.7 sq m

Whilst every attempt has been made to ensure the accuracy of the floorplan contained here, measurements of doors, windows, rooms and any other items are approximate. No responsibility is taken for any error, omission or mis-statement. This plan is for illustrative purposes only and should be used as such by any prospective purchaser. The services, systems and appliances shown have not been tested and no guarantee as to their operability or efficiency can be given.
© Copyright LiFE Residential 2021.

LiFE RESIDENTIAL

36 Millharbour, London, E14

9JS

Sales: 020 3668 1033

Lettings: 020 3668 1030

Energy Rating: . We aim to make our particulars both accurate and reliable. However they are not guaranteed; nor do they form part of an offer or contract. If you require clarification on any points then please contact us, especially if you're traveling some distance to view. Please note that appliances and heating systems have not been tested and therefore no warranties can be given as to their good working order.