



Fenwick Mansions

2 Newcastle Place, W2

£4,000 per month
(£923.08 per week)

A stunning, luxury one bedroom in a brand new development in Paddington Basin. First-class facilities including 24-hour concierge, cinema room, gym & pool access.

CHESTERTONS



Fenwick Mansions

2 Newcastle Place, W2

- New Build
- Private Balcony
- Concierge
- Gym
- Cinema Room
- Access to Pool
- Resident Lounge
- Guest Suite



BRAND NEW DEVELOPMENT

A stunning, luxury one bedroom in a brand new development in Paddington Basin. First-class facilities including 24-hour concierge, cinema room, gym & pool access.

An incredible open plan kitchen/living area complete with integrated appliances and access onto a private balcony provides the perfect space for entertaining or unwinding.

The apartment has a double bedrooms with en-suite. The whole apartment also benefits from comfort cooling.

Minimum Term:
Deposit Required: £4,615.38
Local Authority: City Of Westminster
Council Tax Band: NA
EPC Rating: To be confirmed
Unfurnished

Chestertons Little Venice Lettings

26 Clifton Road
Maida Vale
London
W9 1SX
littlivenicelettingsusers@chestertons.co.uk
02072662369
chestertons.co.uk

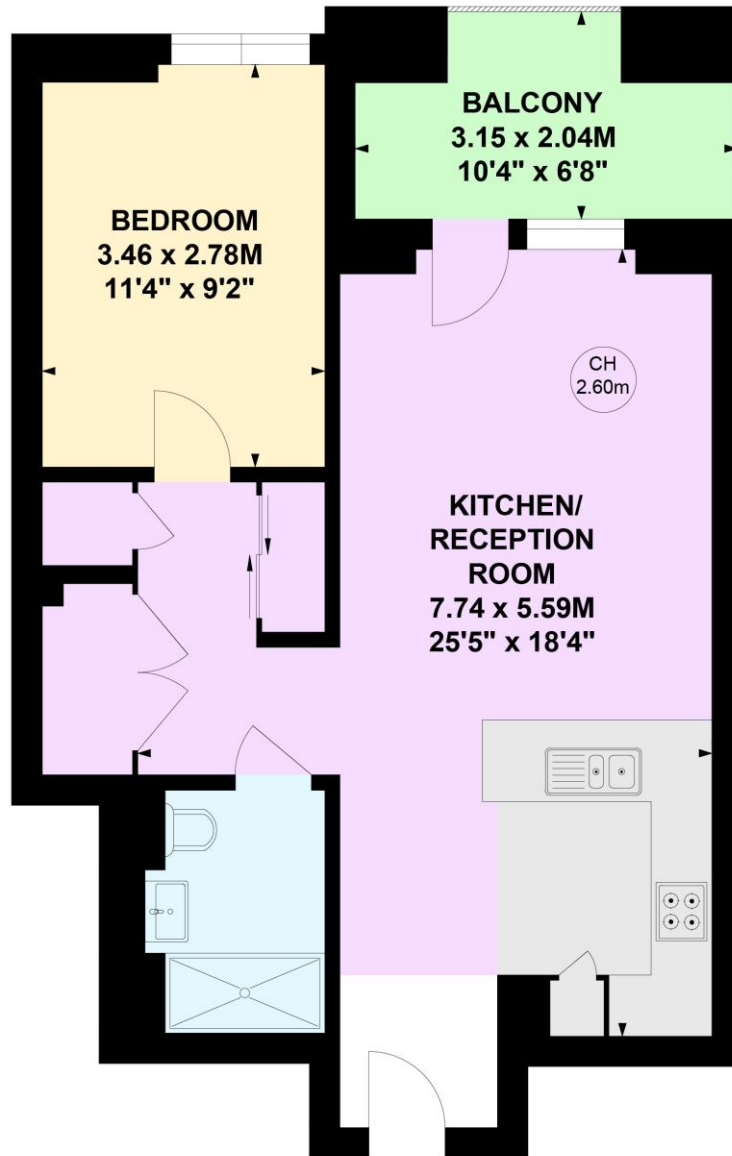
Additional tenant charges apply (fees apply to non-AST tenancies only)
Tenancy Agreement Fee: £300
References per Tenant/Guarantor: £60
Inventory check (approx. £100 – £250 inc. VAT)
[chestertons.co.uk/property-to-rent/applicable-fees](https://www.chestertons.co.uk/property-to-rent/applicable-fees)

Edgware Road, W2

Approximate gross internal area

54.59 sq m / 588 sq ft

Key :
CH - Ceiling Height



Twelfth Floor

This plan is not to scale and must be used as layout guidance only. All measurements and areas are approximate and should not be relied upon to provide accurate information. This plan must not be relied upon when making property valuations, design considerations or any other such relevant decisions. We accept no responsibility or liability (whether in contract, tort or otherwise) in relation to any loss whatsoever arising from or in connection with any use of this plan or the adequacy, accuracy or completeness of it or any information within it.