



OVER 60?

Secure this property
for up to **59% less!**

Price

£475,000

Freehold

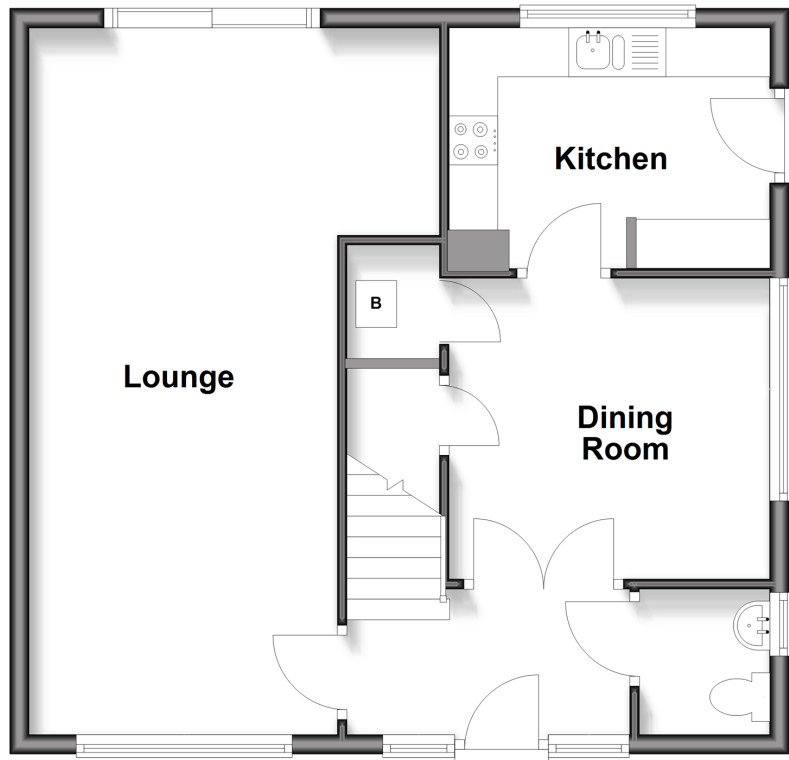
4x  1x  2x 

**Langdale Rise,
Maidstone, Kent ME16**

Wards
Helping you move forwards

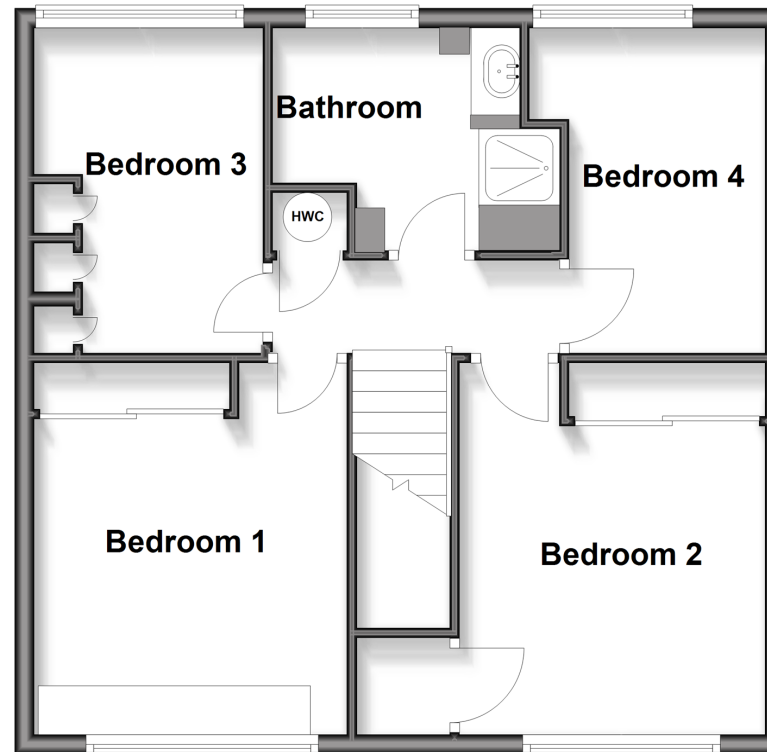
Ground Floor

Approx. 55.1 sq. metres (593.0 sq. feet)



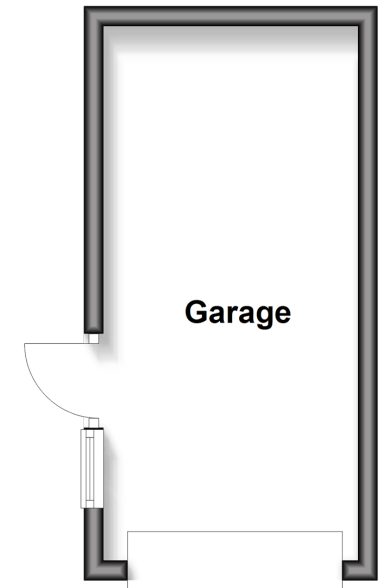
First Floor

Approx. 54.3 sq. metres (584.7 sq. feet)



Outbuilding

Approx. 14.3 sq. metres (154.2 sq. feet)



Accommodation

GROUND FLOOR

Hallway
Cloakroom
Lounge: 23'6 (7.17m) x 13'9 (4.19m) narrowing to 10'5 (3.18m)
Dining Room: 10'8 x 10'2 (3.25m x 3.10m)
Kitchen: 10'6 x 8'0 (3.20m x 2.44m)

FIRST FLOOR

Landing
Bedroom 1: 12'5 x 10'7 (3.79m x 3.23m)
Bedroom 2: 12'5 x 10'7 (3.79m x 3.23m)
Bedroom 3: 10'9 x 7'9 (3.28m x 2.36m)
Bedroom 4: 10'8 x 8'0 (3.25m x 2.44m)
Bathroom

OUTBUILDING

Garage

OUTSIDE

Rear Garden
Front Garden
Driveway



Main features

- Spacious house in a sought after location
- Quiet cul-de-sac setting
- Large dual aspect open plan lounge
- Rear garden with unspoilt views
- Easy access to local amenities, schools, hospital and main road links



Nearest Schools

Primary Schools: St Francis' Catholic Primary, Maidstone 0.2 miles, Brunswick House Primary 0.4 miles, Palace Wood Primary 0.5 miles



Transport Information

Train Stations: Maidstone Barracks 0.6 miles, Maidstone West 0.8 miles, Maidstone East 0.9 miles



Address

Langdale Rise, Maidstone, Kent ME16



Directions

For directions to this property please contact us.



Wards
Helping you move forwards

Call Maidstone Branch 01622 683737 ■ wardsofkent.co.uk



- Legal advice should be taken to verify fixtures/fittings, planning, alterations and/or lease details
- Appliances & services are untested, dimensions are approximate and floor plans are not to scale
- Through a Homewise Home For Life Plan people aged 60+ can secure this property for up to 50% less, by purchasing a Lifetime Lease.



13159038/20250910/DS/DS