



Guide Price
£260,000

Freehold

2x  1x  1x 

**Bull Lane, Eccles,
Aylesford, Kent, ME20**

OVER 60?

Secure this property
for up to **59% less!**

Wards
Helping you move forwards



Main features

- Well presented throughout
- Sociable lounge/diner - perfect for entertaining
- Lovely private & secluded rear garden
- Picturesque country walks from your door
- Great commuter links by road - M2 & M20 close by

Accommodation

GROUND FLOOR

Entrance Hall
 Kitchen: 7'5 x 7'0 (2.26m x 2.14m)
 Lounge: 14'10 x 11'11 (4.52m x 3.63m)
 Dining Area: 10'6 x 4'0 (3.20m x 1.22m)

FIRST FLOOR

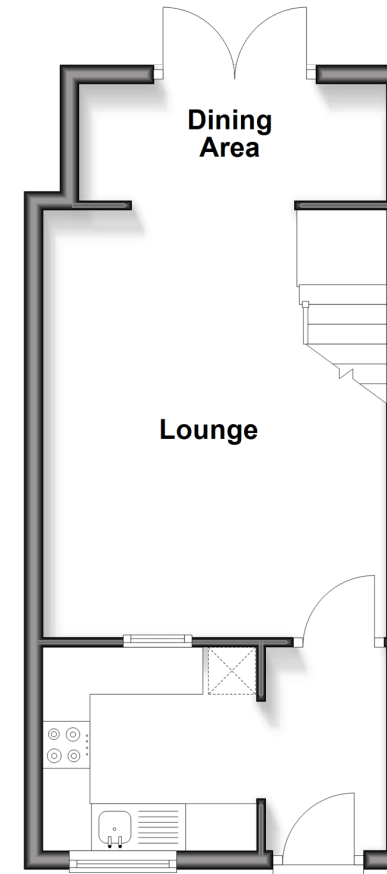
Landing
 Bedroom 1: 11'4 up to fitted wardrobes x 8'7 (3.46m x 2.62m)
 Bedroom 2: 10'10 x 5'10 (3.30m x 1.78m)
 Shower Room

OUTSIDE

Front & Rear Gardens

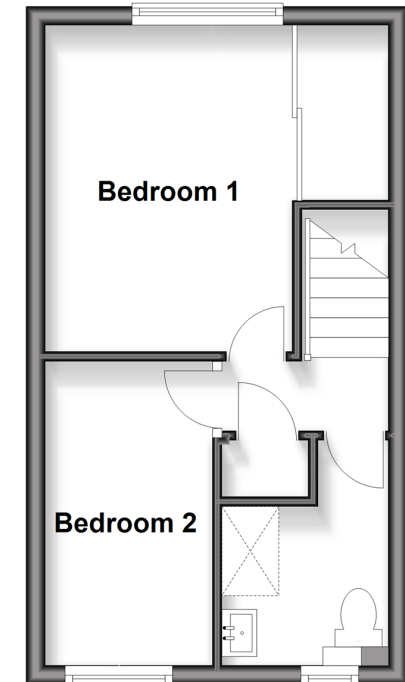
Ground Floor

Approx. 29.2 sq. metres (314.3 sq. feet)



First Floor

Approx. 25.0 sq. metres (269.1 sq. feet)



Call Larkfield - 01732 847877 ■ wardsof Kent.co.uk

- Legal advice should be taken to verify fixtures/fittings, planning, alterations and/or lease details
- Appliances & services are untested, dimensions are approximate and floor plans are not to scale
- Through a Homewise Home For Life Plan people aged 60+ can secure this property for up to 59% less, by purchasing a Lifetime Lease



12935643/20260119/BB/JT