



20 Brinkburn Crescent

, Houghton Le Spring, DH4 5HE

Guide price £70,000

Guide Price £70,000+

It is with pleasure Moovd Online Property Auctions offer For Sale via Option A – Unconditional Online Auction Terms on the 9th April 2026 this two -bedroom, semi-detached property.

The spacious ground floor living space briefly comprises entrance hall with staircase to first floor, lounge with Bay window, generous sized rear dining room and fitted kitchen. To first floor are two double bedrooms and a family bathroom WC. Externally are gardens to front and rear which are mainly laid to lawn and an outhouse.

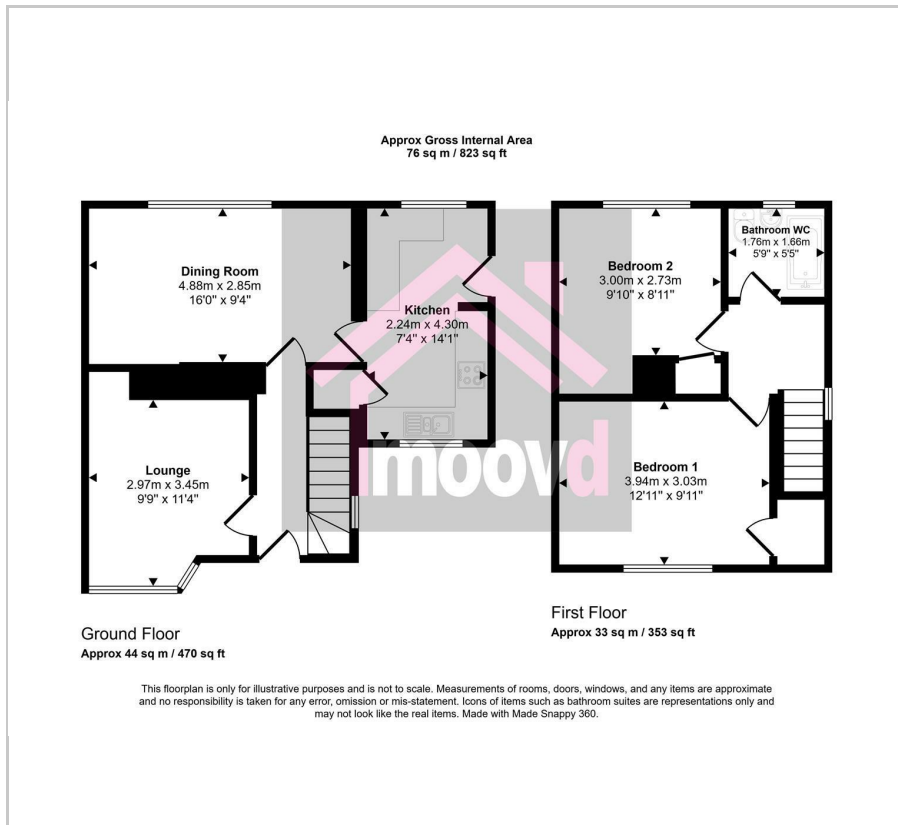
The property has an excellent location within this ever-popular estate and lies only minutes from Houghton Le Spring, yet provides easy access to Chester Le Street, Durham and Sunderland via excellent road networks. Local schools can be found only a short distance away.

Previously used as a BTL investment, the property does require internal updating throughout and would be a perfect renovation project for a first-time buyer, family or developer. The accommodation on offer would appeal to many, and an internal viewing is considered essential to appreciate. Viewings are by appointment only.

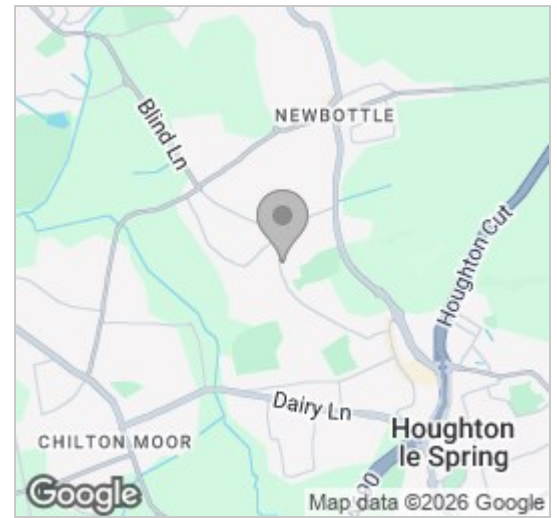
- Offered For Sale via Option A - Unconditional Online Auction Terms
- 9th April 2026
- Two bedroom semi-detached
- Renovation project
- Perfect starter property for FTB
- INTERESTED? VIEW ME!



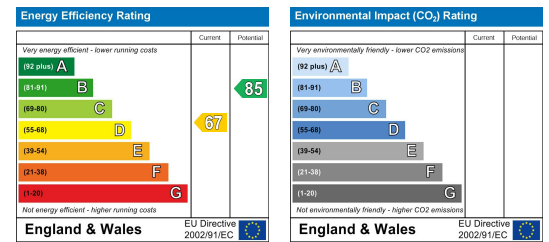
Floor Plan



Area Map



Energy Efficiency Graph



These particulars, whilst believed to be accurate are set out as a general outline only for guidance and do not constitute any part of an offer or contract. Intending purchasers should not rely on them as statements of representation of fact, but must satisfy themselves by inspection or otherwise as to their accuracy. No person in this firm's employment has the authority to make or give any representation or warranty in respect of the property.

