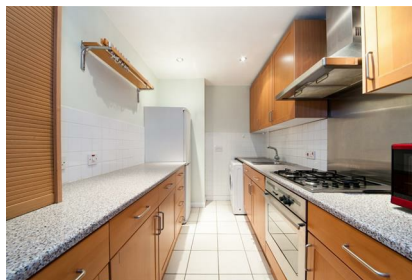


Parkheath

Sold on Service

Belsize Crescent NW3
£2,600 PCM (£600 per week) - Camden Band E

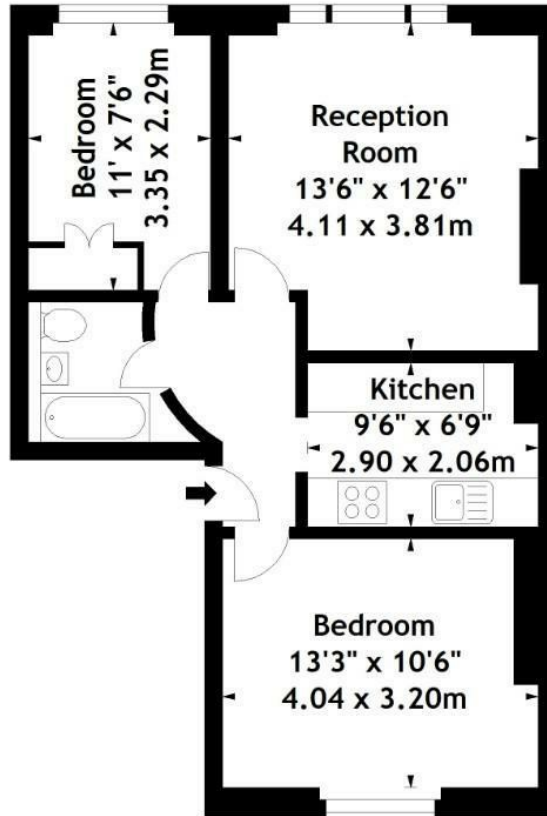


Bright 2 double bedroom apartment
Airy reception room
Fully tiled 3 piece bathroom
Close to Belsize Park and Swiss Cottage tubes

1st floor in handsome period conversion
Separate kitchen with good storage
Located in the heart of Belsize Village
EPC: Rating D, Council Tax: Camden band E

Belsize Park Office 020 7431 3104

Belsize Crescent, NW3
Approx. Gross Internal Area
546 Sq Ft - 50.72 Sq M



First Floor

Measured in accordance with RICS guidelines. Every attempt is made to ensure accuracy, however all measurements are approximate. This floor plan is for illustrative purposes only and is not to scale.
© Datagraphy Ltd 2017
Photographs * Floorplans * Virtual Tours
Tel: 0845 643 4401 www.datagraphy.com

The particulars do not constitute part of an offer or contract. The particulars, including text, photographs and plans, are for the guidance only of prospective purchasers/tenants and must not be relied upon as statements of fact. The descriptions provided therein represent the opinion of the author and whilst given in good faith should not be construed as statements of fact. Nothing in these particulars shall be deemed a statement that the property is in good condition or otherwise or that any services or facilities are in good working order. All measurements are approximate