



31 Draycott Avenue | | LONDON | SW3 3BS

£2,562 Per month

ESON2
REAL ESTATE

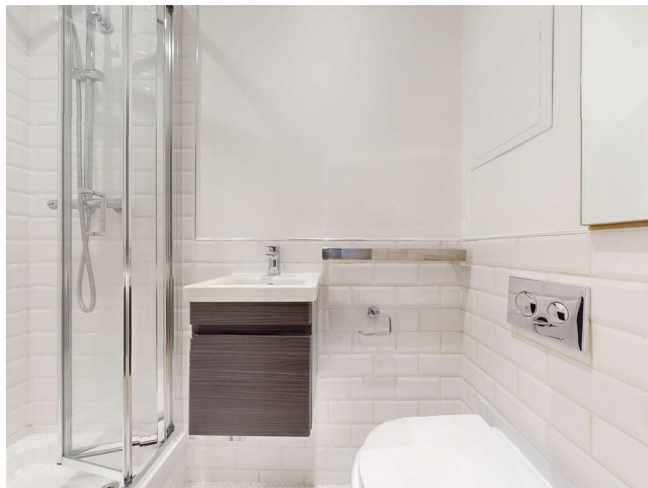
Key features

- Open-Plan Living
- High-End Kitchen
- Luxurious Bathroom
- Smart Design
- On-site Gym
- Workspace Facilities
- 24/7 Security

Description

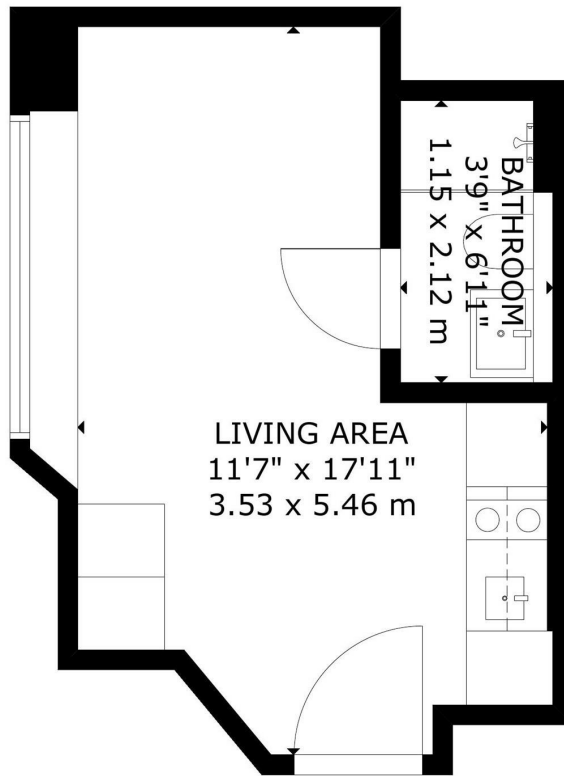
Renovated studio in Chelsea with modern interiors, open-plan layout, and abundant natural light. Includes a premium kitchen, built-in storage, luxury bathroom, on-site gym, co-working space, 24/7 security, and excellent transport links.

Directions



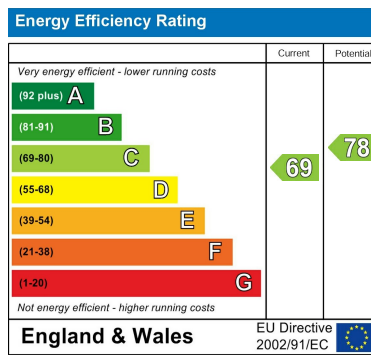
Step into this freshly renovated Chelsea studio SW3, where modern style meets smart, flexible living. The open-plan layout and versatile living-sleeping area create a comfortable, functional space with contemporary interiors and thoughtful detailing throughout.

Floor plans



GROSS INTERNAL AREA
 TOTAL: 19 m²/202 sq ft
 LOWER GROUND FLOOR: 19 m²/202 sq ft
 SIZE AND DIMENSIONS ARE APPROXIMATE, ACTUAL MAY VARY

LOWER GROUND FLOOR



Council Tax Band EPC Rating C



301 Michelin House 81 Fulham road
 London
 Greater London
 SW3 6RD
 07920 257649
 fayeel@eson2.co.uk
 www.eson2.co.uk